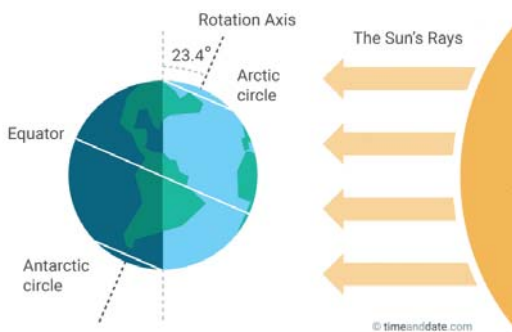


## June 2017 Beaufort Weather Station Summary

### Weather Summary

In climatological terms, the months of June July and August (JJA) is referred to as the summer season in the Northern Hemisphere. The June solstice is the Summer Solstice in the Northern Hemisphere and the Winter Solstice the Southern Hemisphere.



### The June Solstice

'Solstice' (Latin: 'solstitium') means 'sun-stopping'. The point on the horizon where the sun appears to rise and set, stops and reverses direction after this day. On the summer solstice, the sun does not rise precisely in the east, but rises to the north of east and sets to the north of west, meaning it is visible in the sky for a longer period. The date varies between June 20 and June 22, depending on the year, and the local time zone. For Cork, the June Summer Solstice was on Wednesday 21 June 2017.

### Northern Meteorological Seasons

**Winter** DJF December, January, February

**Spring** MAM March, April, May

**Summer** JJA June, July, August

**Autumn** SON September, October, November

This the period where we expect to observed the highest temperatures at the Beaufort Weather Station.

Generally, June 2017 can be broken into three broad synoptic periods:

1. June 01-15: Very Wet and Mild
2. June 16-25: Dry and Hot
3. June 26-30: Wet and Mild

### Temperature – Warm Overall

The highest temperature recorded during the month was 24.6°C (June 21), the lowest was 7.7°C (June 7). The mean temperature for the month was 15.2°C: +1.8°C compared to the Climate Normal (1961-1990) for Cork, however this have been the lowest temperature departure recorded so far:

Month	Departure from Normal Mean Temperature (1961-1990)
April*	+2.2°C
May	+2.4°C
June	+1.8°C

\* Beaufort weather station began recording April 11 2017

The Highest Diurnal Temperature Range (DTR) was 10.8°C on June 19 (Maximum daily temperature [MxDT] 18.8°C Minimum daily temperature [MnDT] 13.3°C), the lowest DTR was 2.3°C on June 01, (MxDT 14.7°C, MnDT 12.4°C). Mean DTR for the month of June was 6.6°C.

## Rainfall – Highest since Beaufort Weather Station Began Recording

In total, the weather station recorded 99.4mm of rain during the month of June; this represents 95% of the amount recorded by the nearest station operated by Met Éireann (Roches point recorded 104.4mm of rain for June) therefore shows good agreement in terms of monthly accumulated values. 94.4mm is 45.5mm above the June precipitation climate normal (1961-1990) for Cork. The station recorded rain on 18 out of 30 days in June. Of these 18 days:  $\text{ms}^{-1}$

- 3 days recorded rainfall  $\leq 0.2\text{mm}$
- 3 days recorded rainfall  $> 0.2\text{ mm}$  and  $\leq 2.0\text{mm}$
- 12 recorded rainfall amounts  $> 2.0\text{mm}$

The wettest day was Friday June 09 with 16.4mm of rain, followed by June 10 with 16.2mm of rain. The highest consecutive period with recorded rain was 6 days (between June 07-12) a total of 50.6mm of rain (or 51% of the total amount recorded in June) fell during this period. The longest consecutive period with no rain recorded was 5 days (between June 16-20).

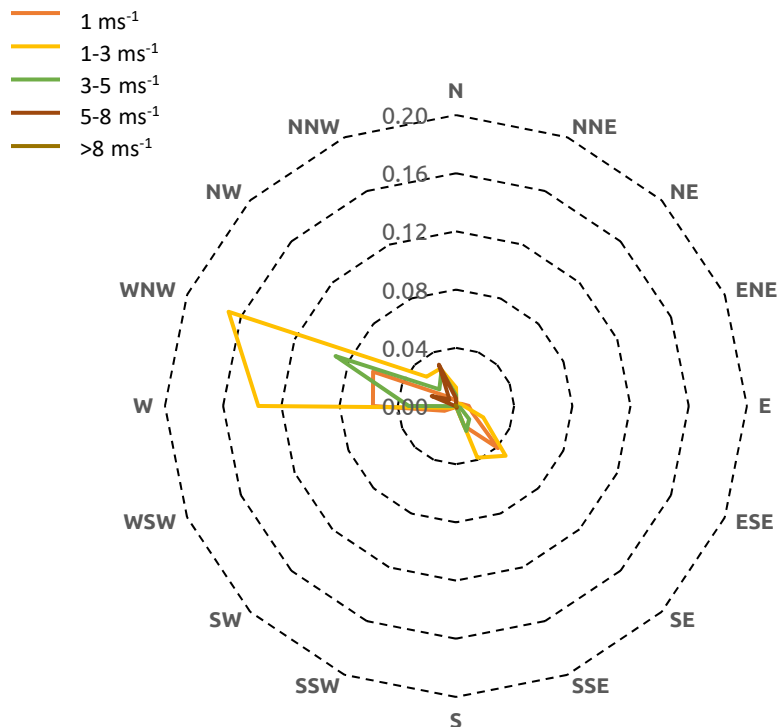
Month	Amount	Departure from Normal (1961-1990)
April*	10.8mm	-43.9mm
May	53.2mm	-10.7mm
June	99.4mm	+45.5mm

\* Beaufort weather station began recording April 11 2017

## Wind – Overall light throughout the month

Overall, recorded wind speeds were low for the entire month of June, the mean wind speed was  $2.2\text{ ms}^{-1}$ . The average gust speed was  $8.8\text{ ms}^{-1}$  (17 knots,  $31.6\text{ kmh}^{-1}$ ) for the month, with the highest gust occurring on the last day of the month, June 30 at  $13.9\text{ ms}^{-1}$ , 27 knots,  $50.04\text{ kmh}^{-1}$ .

Wind direction was predominantly from the WNW and W, though a relatively stable period of wind from the SE was observed 15-20 June, more or less coinciding with the increase in temperatures confirming the presence of anti-cyclonic conditions (high-pressure system) over Ireland.



NOAA Report

MONTHLY CLIMATOLOGICAL SUMMARY for JUN. 2017

NAME: Beaufort Building CITY: Cork STATE: Munster, IRE  
ELEV: 5 m LAT: 51° 50' 04" N LONG: 8° 18' 07" E



TEMPERATURE (°C), RAIN (mm), WIND SPEED (m/s)

DAY	MEAN TEMP	HIGH	TIME	LOW	TIME	HEAT DEG DAYS	COOL DEG DAYS	RAIN	AVG WIND SPEED	HIGH	TIME	DOM DIR
1	13.7	14.7	9:50	12.4	11:15	4.3	0.0	8.2	1.3	8.9	10:10	W
2	13.7	18.0	16:20	8.4	6:00	4.2	0.0	0.2	1.3	8.0	18:05	W
3	13.6	17.6	17:35	10.6	6:10	4.4	0.0	1.6	2.1	9.4	14:25	W
4	13.0	17.1	13:55	8.9	5:35	5.0	0.0	4.4	1.9	9.4	22:55	WNW
5	12.5	14.2	9:50	9.8	17:25	5.5	0.0	13.0	3.0	12.5	15:50	W
6	12.7	16.3	15:30	9.7	3:40	5.3	0.0	0.0	4.8	12.5	15:40	WNW
7	12.4	15.7	18:10	7.7	5:30	5.6	0.0	6.0	1.7	8.5	17:55	WNW
8	14.3	17.6	12:30	12.0	23:50	3.7	0.0	9.8	1.8	11.6	14:40	W
9	13.1	16.2	10:35	9.3	5:50	4.9	0.0	16.4	1.8	11.2	22:00	WNW
10	15.3	17.6	11:40	13.0	0:05	2.7	0.0	16.2	2.5	10.7	15:00	WNW
11	14.2	16.7	18:50	12.7	00:00	3.8	0.0	2.0	3.4	13.0	17:30	W
12	14.3	17.8	12:15	12.1	1:35	3.3	0.0	0.2	2.0	6.7	10:10	WNW
13	15.1	17.1	14:45	12.8	23:40	1.8	0.0	0.0	0.8	6.3	13:05	WNW
14	14.7	17.3	13:40	12.7	2:20	3.3	0.0	0.6	1.6	8.5	18:20	SE
15	15.3	19.2	14:45	11.9	5:15	2.8	0.0	0.2	3.1	11.6	11:00	WNW
16	17.9	23.8	17:20	13.2	5:45	1.7	1.6	0.0	1.8	6.7	9:15	WNW
17	17.5	21.8	13:30	12.8	3:35	1.8	1.3	0.0	1.1	5.8	17:10	WNW
18	16.4	21.1	16:35	12.0	5:25	1.9	0.3	0.0	1.5	5.8	12:45	SSE
19	18.8	24.1	14:25	13.3	4:10	1.2	2.0	0.0	0.8	3.6	16:40	SSE
20	18.2	22.0	11:15	15.4	4:05	0.7	0.9	0.0	1.6	11.2	20:00	SE
21	18.9	24.6	17:45	15.8	2:55	0.6	1.5	1.0	1.7	6.3	19:20	SSE
22	16.7	21.3	16:00	14.1	6:30	1.8	0.5	0.0	2.6	8.5	18:15	WNW
23	16.6	19.3	14:15	14.6	1:00	1.5	0.1	0.0	2.6	8.9	3:05	W
24	17.0	22.4	16:50	13.7	5:50	1.9	0.9	0.0	2.1	7.6	19:45	WNW
25	15.9	18.9	14:00	13.7	00:00	2.0	0.0	0.0	2.5	6.7	3:35	WNW
26	14.3	15.8	13:50	12.8	4:55	3.7	0.0	8.8	1.8	7.6	14:05	SE
27	16.4	20.0	17:55	14.0	00:00	1.7	0.1	3.6	1.6	5.8	10:00	WNW
28	15.1	19.1	13:40	10.6	5:40	2.9	0.1	4.8	1.5	7.2	20:25	WNW
29	14.2	17.6	15:10	12.4	8:55	3.8	0.0	2.4	4.2	12.1	19:25	NNW
30	14.6	18.2	17:20	11.7	23:55	3.5	0.0	0.0	5.5	13.9	13:55	NNW
<hr/>												
	15.2	24.6	21	7.7	7	91.3	9.4	99.4	2.2	13.9	30	WNW

Max >= 32.0: 0  
Max <= 0.0: 0  
Min <= 0.0: 0  
Min <= -18.0: 0

Max Rain: 16.41 ON 09/06/17

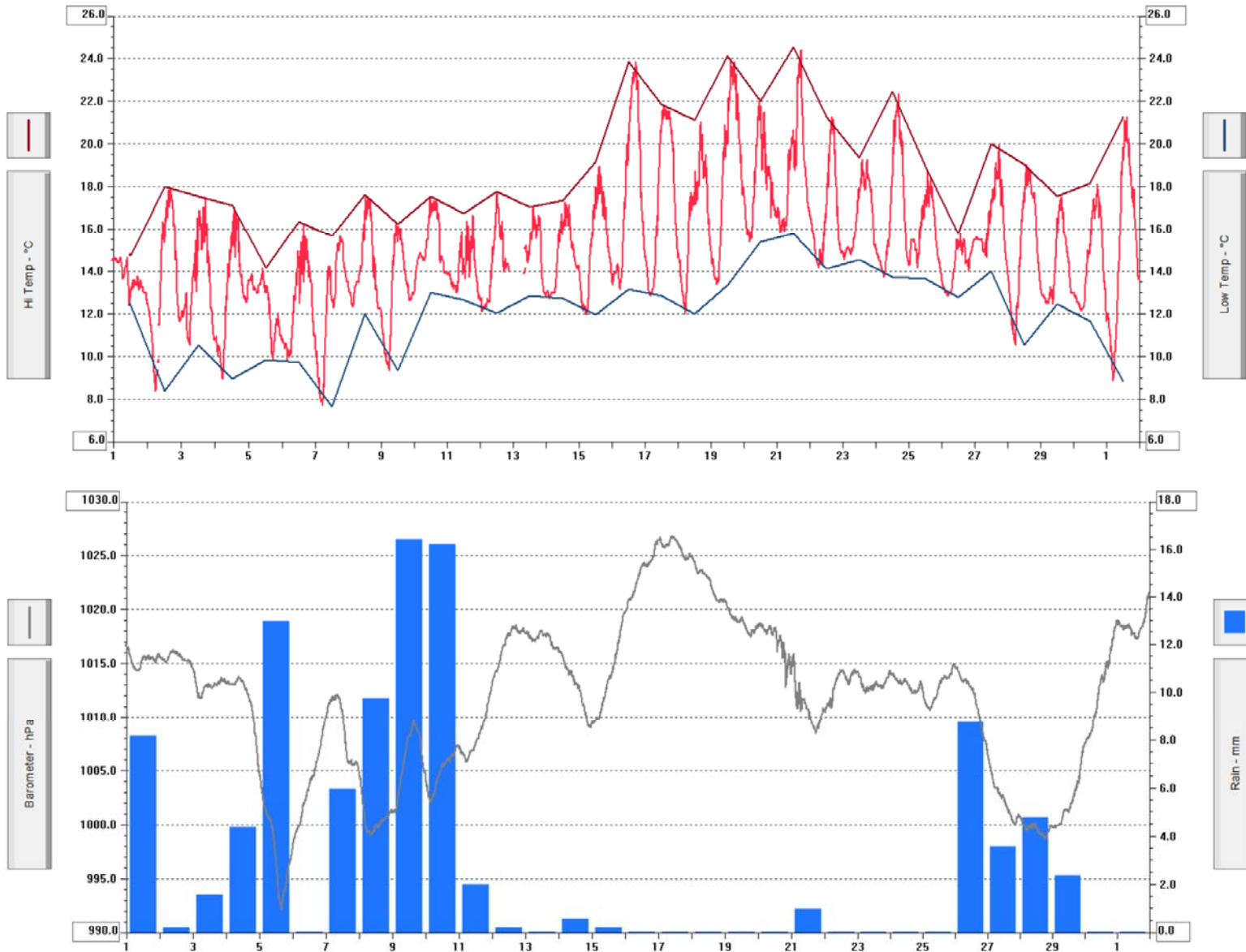
Days of Rain: 18 (> .2 mm) 12 (> 2 mm) 0 (> 20 mm)

Heat Base: 18.0 Cool Base: 18.0 Method: Integration

## Time Series for June 1 to July 1 2017 for Min, Mean and Max Temperature (top), Precipitation and Pressure (bottom)

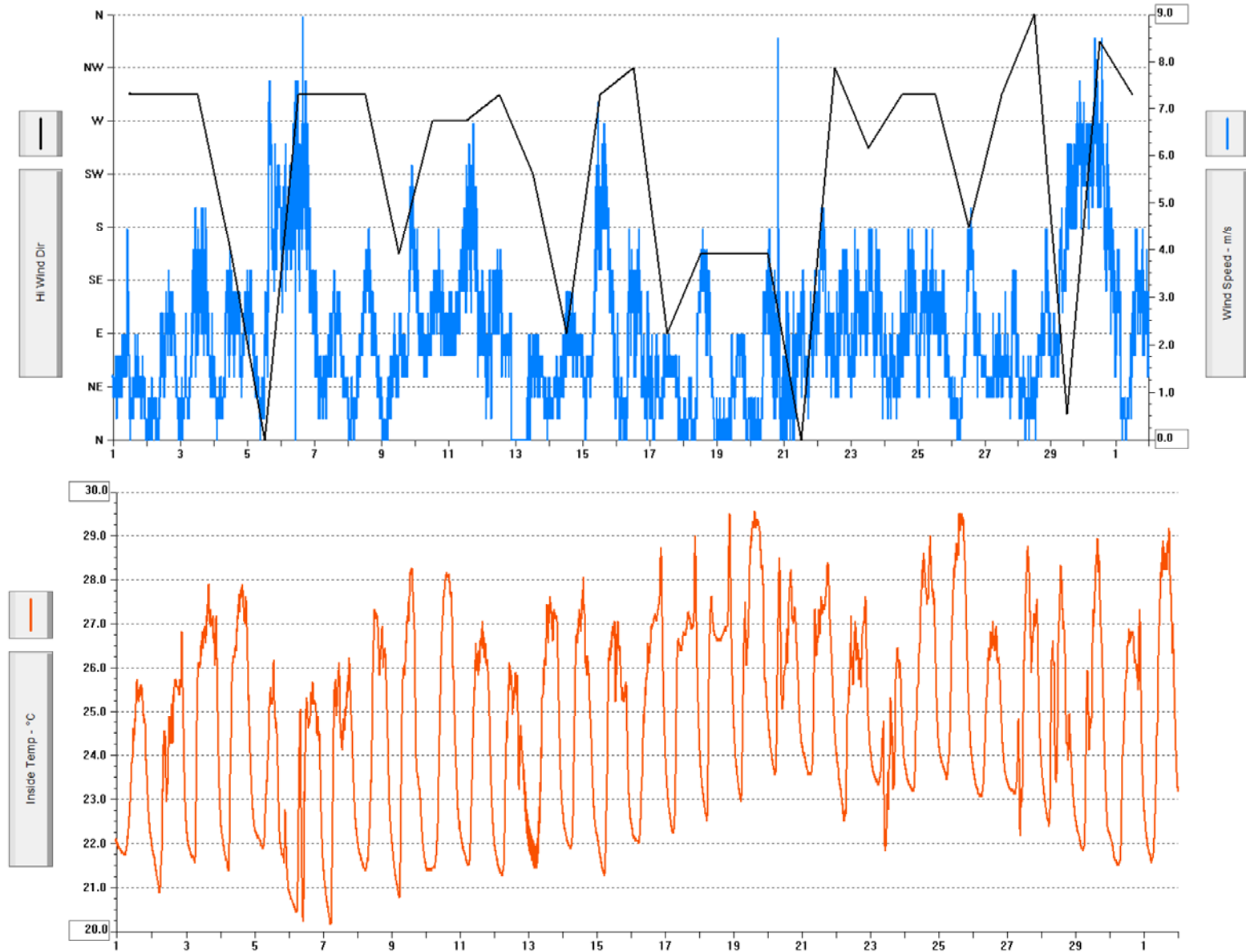
These graphs are generated using Weatherlink Software using raw data collected by the WOS -

[click here for more information](#)<sup>1</sup>

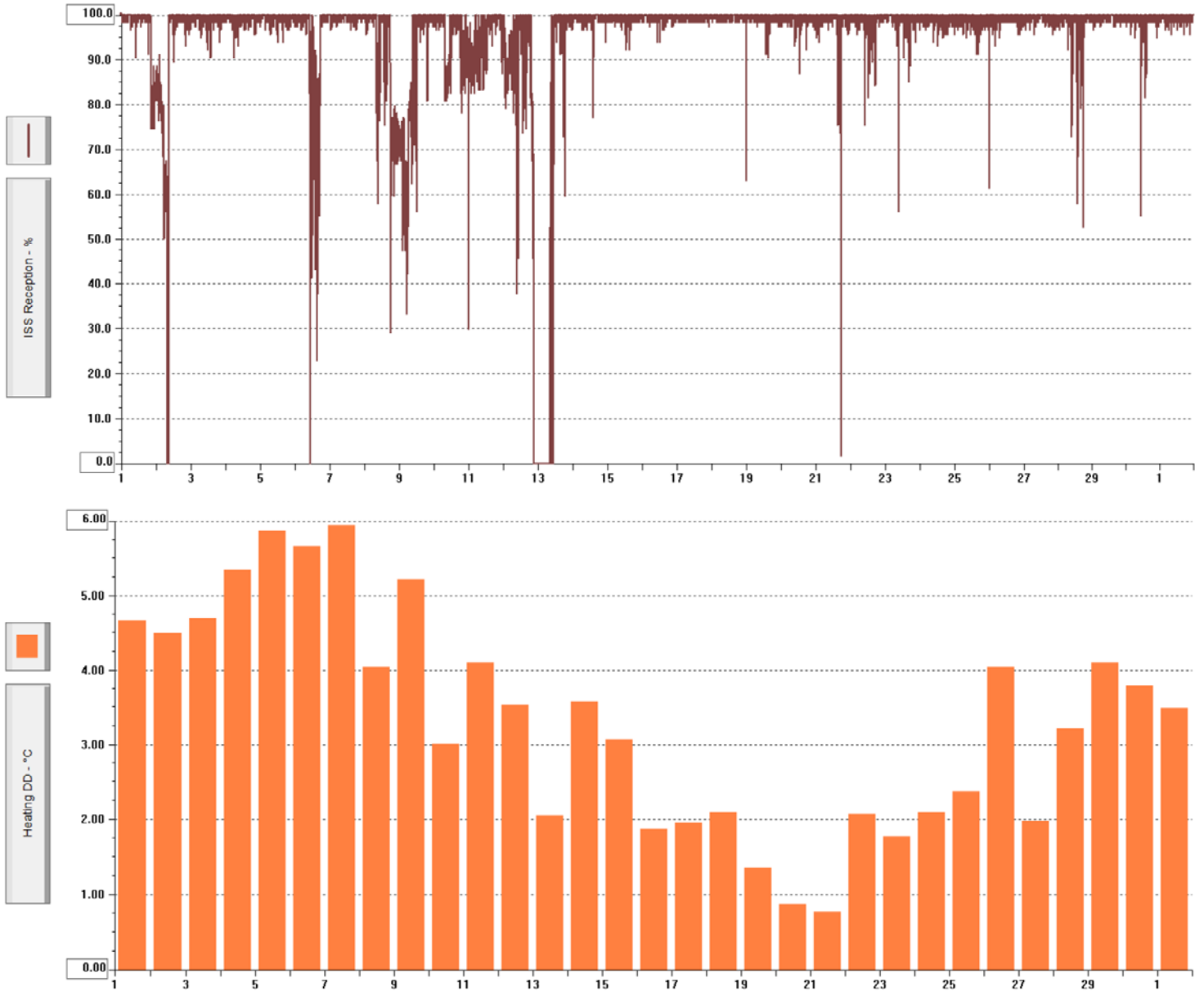


<sup>1</sup> [http://www.davisnet.com/product\\_documents/weather/manuals/07395-210\\_GSG\\_06510\\_6555.pdf](http://www.davisnet.com/product_documents/weather/manuals/07395-210_GSG_06510_6555.pdf)

## Time Series for June 1 to July 1 2017 for Wind speed and high wind direction (top) and inside air temperature (bottom)



## Time Series for June 1 to July 1 2017 for ISS data packet receipt (top) and heating degree-days (bottom)



Real-time information from the station can be viewed at:

<http://www.weatherlink.com/user/marei/index.php?view=main&headers=0>

The Beaufort WOS was funded internally by



Paul J. Alexander  
[paul.alexander@ucc.ie](mailto:paul.alexander@ucc.ie)

Title: Post Doctoral Researcher  
Role: Researcher  
Location: University College Cork (Beaufort Building)  
Phone: +353 (0)21 486 4328

Sophie Power  
[sophie.power@ucc.ie](mailto:sophie.power@ucc.ie)

Title: Research Assistant  
Role: Researcher  
Location: University College Cork (Beaufort Building)  
Phone: +353 (0)21 486 4344



This report was undertaken voluntarily please contact either of the authors directly for more information