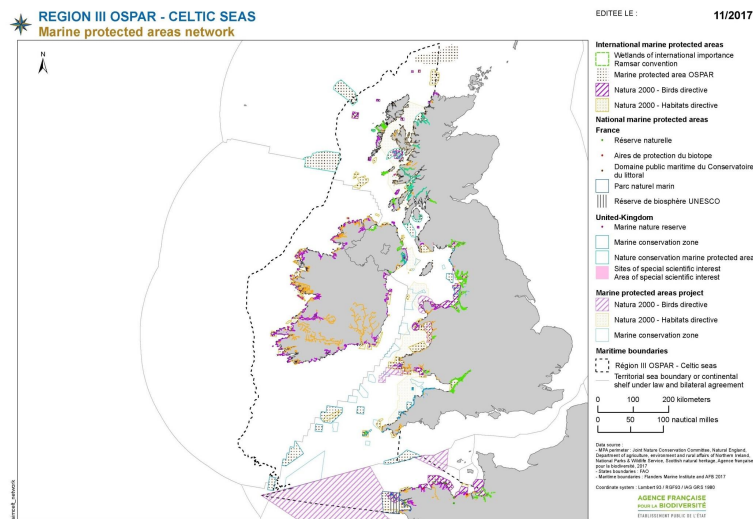




Supporting Implementation of Maritime Spatial Planning in the Celtic Seas



Component: 1.2.1 Spatial demands and scenarios for maritime sectors

Deliverable: D3B – Marine Protected Areas in the Celtic Sea: North-East Atlantic Database completion and analysis



European Commission
Directorate-General for Maritime Affairs and Fisheries

Grant Agreement No. EASME/EMFF/2014/1.2.1.5/3/SI2.719473 MSP Lot 3

SIMCelt partners



Deliverable i.d.:	D3B
Deliverable Lead Partner:	French Biodiversity Agency
Due Date of Deliverable:	31/03/2018
Completion Date of Deliverable:	14/03/2018
Start Date of Project:	29/12/15
Duration:	24 Months
Version:	1.0
EU Grant Call:	Action on Maritime Spatial Planning in the Northern European Atlantic
EU Project Officer:	David San Miguel Esteban

***Disclaimer:** The contents and conclusions of this report, including the maps and figures, were developed by the participating partners with the best available knowledge at the time. They do not necessarily reflect the national governments' positions and are therefore not binding. This report reflects only the project SIMCelt partners' view and the European Commission or Executive Agency for Small and Medium-sized Enterprises is not responsible for any use that may be made of the information it contains.*

Dissemination Level

PU	Public	X
PP	Restricted to a group specified by the consortium (including the Commission services)	
RE	Restricted to other programme participants (including the Commission services)	
CO	Confidential, only for members of the consortium (Including the Commission services)	

Document Information

Deliverable Title	Protected Areas in the Celtic Sea - North-East Atlantic Database completion and analysis
Coordinator	Neil Alloncle
Authors	Guillaume Fauveau, Neil Alloncle
Recommended Citation	Fauveau, G., and Alloncle, N. 2017. Marine Protected Areas in the Celtic Sea - North-East Atlantic Database completion and analysis (D3B). EU Project Grant No.: EASME/EMFF/2014/1.2.1.5/3/SI2.719473 MSP Lot 3. Supporting Implementation of Maritime Spatial Planning in the Celtic Seas (SIMCelt). French Agency for Biodiversity. 52 pp.

Version History

Date	Document Version	Reviewer	Revision
23/11/2017	1.0	Guillaume Fauveau / Neil Alloncle	Initial draft
12/03/2018	1.1	Anne Marie O'Hagan	Document reviews
14/03/2018	2.0	Neil Alloncle	Final version

About SIMCelt

The SIMCelt Project SIMCelt - Supporting Implementation of Maritime Spatial Planning in the Celtic Seas is a two-year €1.8 million project co-financed by DG MARE and focussed on promoting the development of transnational cooperation to support the implementation of Directive 2014/89/EU in the Celtic Seas. Led by University College Cork, the project consortium comprises both planners and researchers from seven partner institutes representing a mix of governmental authorities and academic institutes from Ireland, France and the UK. This consortium is particularly interested in developing meaningful cooperation between neighbouring Member States to support implementation of spatially coherent plans across transboundary zones of the Celtic Seas, building on previous work and leveraging new opportunities to identify and share best practice on technical, scientific and social aspects of transboundary MSP.

To explore how transboundary working for MSP is being undertaken in the Celtic Seas, SIMCelt project components focus on understanding spatial demands and scenarios, data requirements for MSP and stakeholder engagement. To complement the outputs of these components, four case studies were selected to illustrate how MSP implementation and transboundary working are approached within the Celtic Seas.

This report is a part of the component on spatial demands and scenarios for maritime sectors and marine conservation (C1.2.1). A transnational MPA database has been completed with information related to the MSP context in each SIMCelt partner country (MPA conservation objectives and main processes for regulation of uses within their perimeters). Basic figures about the Celtic Sea MPA network have been calculated at the scale of the OSPAR Region III. This report should be read in conjunction with the associated Deliverable on Marine Protected Areas in the Celtic Seas - Analysis of National Frameworks (D3A).

TABLE OF CONTENTS

1. PRESENTATION OF THE NORTH-EAST ATLANTIC MPA DATABASE	6
1.1. HISTORY	6
1.2. HOW IT WORKS	7
1.3. ONLINE DATA AVAILABILITY.....	9
2. DATA ON MPAS FOR MARITIME SPATIAL PLANNING	10
3. COMPLETION OF THE DATABASE	12
3.1. ADDITION OF BOUNDARIES	13
3.1.1 Ireland	13
3.1.2 United Kingdom.....	13
3.2. MARINE SPECIES AND HABITATS.....	14
3.3. ACTIVITIES AND REGULATIONS.....	16
4. ANALYSIS	19
4.1. CELTIC SEAS MPA NETWORK AND GEOGRAPHIC REPRESENTATIVENESS.....	19
4.2. REPRESENTATIVENESS BASED ON DESIGNATION OBJECTIVES.....	23
4.3. USES OCCURRING WITHIN MPAS.....	28
5. CONCLUSIONS	29
6. ANNEXES	30
ANNEX 1: LIST OF MPAS TAKEN INTO ACCOUNT IN THE NEA DATABASE FOR THE CELTIC SEA AREA (OSPAR REGION III)	30
ANNEX 2: REFERENCE LIST FOR SPECIES IN THE NEA DATABASE.....	42
ANNEX 3: REFERENCE LIST FOR HABITATS IN THE NEA DATABASE	44
ANNEX 4: DETAILED MAPS OF THE NETWORK	47
7. BIBLIOGRAPHY.....	51

LIST OF FIGURES

Figure 1: Data input module for MPA attribute	9
Figure 2: Excerpt from the data input module for species and habitats	15
Figure 3: Excerpt from the data input module for regulations	18
Figure 4: Map of the network of Marine Protected Areas in the Celtic Seas	21
Figure 5: Marine Protected Areas designated for benthic habitats	24
Figure 6: Marine Protected Areas designated for seabirds	25
Figure 7: Marine Protected Areas designated for marine mammals	26

LIST OF TABLES

Table 1: MPA categories included in the NEA Database for the Celtic Sea region	7
Table 2: Standard WDPAs attributes completed for each of the MPAs stored in the NEA database.....	7

Table 3: Number of Marine Protected Areas included in the NEA database that are located in the OSPAR Celtic Seas region 12

Table 4: MPA number and coverage statistics by category for the OSPAR Celtic Seas Region 19

Table 5: Spatial coverage of the MPA network within OSPAR Region III Celtic Seas 22

1. PRESENTATION OF THE NORTH-EAST ATLANTIC MPA DATABASE

1.1. History

The NEA MPA Database originated from the INTERREG MAIA (Marine protected areas in the Atlantic arc) project¹, which ran from 2010 to 2012 under the coordination of the French *Agence des Aires Marines Protégées* (AAMP), formerly *Agence Française pour la Biodiversité* (AFB). Its purpose was to set up a network for information exchange and discussion between managers of Marine Protected Areas (MPAs) in the Atlantic Arc. Four countries were involved in the MAIA project: Portugal, Spain, France, and the United Kingdom. One of the tools put in place during the project was a MPA database, originally called the “MAIA database”. It consisted of geographic data for each MPA, compiled using the World Database on Protected Areas (WDPA²) standards, and attribute data on species, habitats and activities in the area, along with management measures and protection measures.

In 2013, the “MAIA database” was expanded and became the “NEA Database” to meet the needs of the INTERREG PANACHE (Protected area network across the Channel ecosystem) project, the counterpart of MAIA for the English Channel, also coordinated by AAMP from 2013 to 2015. As the geographic scope of the database was extended to include the Channel, several fields and values in the attribute data were added.

Furthermore, as part of AFB’s cooperation with the OSPAR Commission (Convention for the Protection of the Marine Environment of the North-East Atlantic), the decision was made in 2013 to make the NEA database the reference database for compiling information on the OSPAR network of Marine Protected Areas. Specific fields for OSPAR purposes were, therefore, added to the NEA Database. Since then, data related to the OSPAR MPA network were completed in the database by the OSPAR Contracting Parties themselves.

When the SIMCelt Project began, the NEA Database included MPAs (boundaries and attribute) for France. For the United Kingdom, and MPAs that are not OSPAR MPAs, the MPA list was last updated at the end of the MAIA project (2012), and most attribute data on species, habitats and activities did not feature. Information for the Republic of Ireland in the database related only to OSPAR MPAs.

¹ <http://www.maia-network.org/>

² <https://www.protectedplanet.net/c/world-database-on-protected-areas>

³ <http://www.panache.eu.com/>

1.2. How it works

The NEA database encompasses numerous designations that are all considered as ‘MPAs’ by individual countries. MPA categories occurring in the Celtic Sea are listed in the Table below.

Table 1: MPA categories included in the NEA Database for the Celtic Sea region

International / EU MPA categories		
Marine Protected Area (OSPAR)		
Special Protection Area (EU Birds Directive)		
Special Area of Conservation (EU Habitats Directive)		
Wetland of International Importance (Ramsar Convention)		
Biosphere Reserve (UNESCO)		
National Categories		
France	United Kingdom	Ireland
Nature Marine Park	Site of Special Scientific Interest (England, Wales, Scotland)	<i>Irish MPA network is designated under international MPA categories</i>
Nature Reserve	Area of Special Scientific Interest (Northern Ireland)	
Biotope Protection by law	Marine Nature Reserve (England, Wales, Northern Ireland)	
Marine State Property managed by Conservatoire du Littoral	Nature Conservation MPA (Scotland)	
	Marine Conservation Zone (UK)	

As seen earlier, to be added to the NEA Database, new MPAs need to be described with boundaries and key data related to the WDPA standards. A number of these fields are listed in Table 2 below.

Table 2: Standard WDPA attributes completed for each of the MPAs stored in the NEA database

WDPA ID	A unique identification number for the area, which is required for the MPA to be added to the database. This can be obtained from the Protected Planet website
WDPA PID	Parent ID
NAME	Official name of the MPA without accents
ORIGINAL NAME	Name of the MPA in the original language (with accents)

COUNTRY	Country of the MPA
DESIGNATION	Type of MPA, in the original language (with accents)
DESIG_ENG	Type of MPA, in English
DESIGNATION TYPE	Describes whether a protected area is National or International by designation
IUCN CATEGORIES	IUCN Category of the MPA for REPORTED MARINE AREAS: marine area of the MPA (in km ²), as declared in the designation decree/order (or calculated)
MARINE	Type of protected area (0: terrestrial area; 1: mixed and marine)
REPORTED AREA	Total area of the MPA (in km ²) as reported in the designation deed/order (or calculated)
STATUS	Proposed (planned project) or Designated (officially designated site). Only officially designated sites are given a WDPA ID and are therefore included in the database.
STATUS YEAR	Year in which the official status was decreed

Once these fields are completed and the topology of the areas is verified, the MPAs are added to the database. A user account is linked to each MPA by the central administrator so that attribute data can be entered.⁴ This data includes fields related to the general characteristics of the MPA (this is the key data covered above), and any information related to official site management purposes. There is also a tab for marine species and habitats, featuring a list of species and habitats where users can indicate which ones are found in the site, those used to justify designation of the MPA and whether these items are monitored.⁵

A tab on 'Regulation' lets users enter information on activities. As with habitats and species, a list of activities is provided where users can indicate whether they occur on the site, whether they are regulated and the type of regulation.⁶

⁴ See Figure 1

⁵ See Figure 2

⁶ See Figure 3

Communauté des gestionnaires d'AMP de l'Atlantique Nord-Est

Etienne Guillaume FAUVEAU
Se déconnecter

Les aires marines protégées | Annuaire | Forum | Proforma OSPAR | EN | FR

ALLONBY BAY - Marine conservation zone

Pays:	Royaume Uni
Nom de l'AMP:	ALLONBY BAY
Désignation en langue nationale:	Marine conservation zone
Statut:	Désigné
Année d'attribution du statut:	2016
WDPA ID:	555588149
WDPA PID:	555588149

Périmètre principal

- Informations du fournisseur de données AMP
- Caractéristiques générales
- Espèces et habitats marins
- Gouvernance
- Moyens et ressources
- Plan de Gestion
- Règlementation
- Suivis
- Documents et photos

Sauvegarder et quitter Sauvegarder Soumettre

Figure 1: Data input module for MPA attribute

1.3. Online data availability

The NEA MPA database contributes to the objectives of various projects and initiatives (MAIA, PANACHE and OSPAR), therefore, data contained within the NEA database are available through several portals:

- MAIA project portal (<http://www.maia-network.org>) Data are available for MPAs of the Atlantic Arc area: Western part of UK waters, Irish waters, Atlantic French waters as far as the Channel (not included), Spanish Atlantic waters, Portuguese waters.
- PANACHE project portal (<http://www.panache.eu.com>) Data are available for MPAs in French and English waters of the Channel.
- OSPAR MPA portal (<http://mpa.ospar.org>) Data are available only for OSPAR MPAs throughout the whole OSPAR area.

Moreover, data from the NEA database are provided to the SIMCelt data portal (<http://data.simcelt.eu>) through a WMS flow.

2. DATA ON MPAS FOR MARITIME SPATIAL PLANNING

Article 5(1) of the MSP Directive states that “when establishing and implementing maritime spatial planning, Member States shall consider economic, social and environmental aspects to support sustainable development and growth in the maritime sector, applying an ecosystem-based approach, and to promote the coexistence of relevant activities and uses”. MSP therefore needs to include MPAs as they underpin the ecosystem-based approach. Accordingly MPA networks mark out the areas that contribute to the support of ecosystems on which other services and resources depend. It is, therefore, essential that MPAs be taken into account in the maritime spatial planning process.

To do so, up-to-date information on MPAs is needed. Because MPA networks continue to evolve (e.g. the creation of new MPAs, new regulations in existing MPAs, etc.), MPA data needs to be updated on a regular basis. For instance, MPAs created by the UK under Tranche Two of MCZ designation (2015) were integrated into the database through the SIMCelt project.

Beyond the geographic distribution of MPAs, specific information for each MPA needs to be made available to the relevant planning authorities so that they are aware of the conservation issues and regulatory framework for each site. When it comes to MSP, it is important to know:

- The category of MPA. There are many types of MPAs in every country, each with different goals (species or ecosystem protection, sustainable development of activities, etc.) and their own regulatory framework. These differences have to be taken into account when considering MPAs in MSP processes.
- The conservation objectives of the MPAs. These are generally targeted at species or habitats facing challenges and are listed in the designation documents. This information is used to anticipate potential incompatibilities with certain uses of the marine environment.
- The activities occurring in the MPAs and how these are managed. This varies from one type to another and sometimes within the same type of MPA. This information is used to anticipate the impact of MPA networks on planning and management of maritime activities.
- The governance of each MPA. The governance framework for MPAs varies depending on the type of MPA, with some having a high degree of stakeholder involvement and other having less.

Under the SIMCelt Project, work on the database consisted primarily of updating the MPAs included in the database (addition of new MPAs), adding to the inventory of habitats and species for which the MPAs were designated, and where possible, the inventory of activities occurring within the sites and details on how these are regulated.

Although the types and management approaches used in MPAs cannot and should not be directly compared between countries, it is important that the objectives and management methods, based on common attributes, are understood so that this can be incorporated into the MSP processes and subsequent plans to be implemented in the Celtic Seas.

3. COMPLETION OF THE DATABASE

As the listing of French MPAs is up to date in the database, the goal was to complete this for the two remaining States: Ireland and the UK. For Ireland the database only included OSPAR Marine Protected Areas. For the UK, the list of MPAs, other than OSPAR sites, had not been updated since the end of the MAIA project (2012). Data on MPAs collected through SIMCelt concern specifically Region III of OSPAR. Therefore, figures in this report are calculated at this scale and should not be compared with national MPA statistics since OSPAR Region III does not cover the entirety of national waters. Moreover, data collation was carried out during the first half of 2017, and accordingly MPAs created since then are not included here.

Disclaimer: For technical reasons, several Irish MPAs are not included in the North East Atlantic MPA database.⁷ Specifically Natural Heritage Areas and Nature Reserves (national categories), Ramsar sites and Biosphere Reserves (international categories) are not included. Maps displayed in this report, therefore, do not take these categories into account. It was not possible to calculate figures for the numbers of sites in each category or for spatial extends either. Many NHAs and Nature Reserves are small coastal sites. The figures or spatial coverage are not significantly affected by these exclusions. The list of sites included in these calculations for each country is available in Annex 1 of this report.

Table 3: Number of Marine Protected Areas included in the NEA database that are located in the OSPAR Celtic Seas region

MPA category	Ireland		UK	
	Number of MPAs in the database	Added through SIMCelt work	Number of MPAs in the database	Added through SIMCelt work
SAC/SCI	76	76	57	9
SPA	93	93	43	4
Ramsar	<i>Not included</i>	<i>Not included</i>	22	16
Natural Heritage Area	<i>Not included</i>	<i>Not included</i>		
Nature Reserve	<i>Not included</i>	<i>Not included</i>		
SSSI	<i>N/A</i>	<i>N/A</i>	149	46
ASSI	<i>N/A</i>	<i>N/A</i>	17	17
MCZ	<i>N/A</i>	<i>N/A</i>	21	21
Nature Conservation MPAs	<i>N/A</i>	<i>N/A</i>	14	14
Total	169	169	323	127

⁷ <http://www.maia-network.org>

The attribute data for these sites was also updated, specifically:

- the species and habitats for which the MPAs were designated.
- the activities occurring in the MPA site.

3.1. Addition of boundaries

3.1.1 Ireland

Besides OSPAR sites, the Irish MPA network is mainly made up of sites designated under the Birds and Habitats Directives that have marine qualifying interests. The boundaries of the sites were obtained via the National Parks & Wildlife Service, the national body in charge of designation and management recommendations for protected areas. The SIMCelt project team were then able to add a total of 93 Special Protected Areas (SPA) and 76 Special Areas of Conservation (SAC) or Sites of Community Importance (SCI)⁸ to the NEA MPA database. It should be noted that Region III of OSPAR extends to the 200m depth contour to the west of 6°W and hence does not cover all waters under Irish jurisdiction. Other categories of MPA such as Natural Heritage Areas and Nature Reserves were not included in this work and, hence, in the database.

3.1.2 United Kingdom

The UK MPA network has a range of different types of MPAs and hence a number of administrations and bodies are involved in designating sites and making management recommendations. The devolved administrations in Scotland, Wales and Northern Ireland take a different approach to designation from each other and from England. For England, Wales and Northern Ireland, as a general rule, if the MPA is located in offshore waters (i.e. beyond 12 nautical miles), Defra and the Joint Nature Conservation Committee (JNCC) have jurisdiction over site designation and management strategies. If it is located within inshore waters (i.e. up to 12 nautical miles), the relevant devolved administration has jurisdiction. Each administration is assisted by its own Departments and Agencies: the Marine Management Organisation (MMO) and Natural England (NE) for England; the Welsh Government and Natural Resources Wales (NRW) for Wales; and the Marine and Fisheries Division of the Department of Agriculture, Environment and Rural Affairs (DAERA) for Northern Ireland.

MPA boundaries were obtained from these various bodies. All the boundaries already in the NEA database were reviewed and corrected where necessary, and missing boundaries were added. This includes, for the Natura 2000 network, 9 SACs or SCI and 4 SPAs, 16 sites designated under the Ramsar

⁸ See Table 1

Convention, 46 Sites of Special Scientific Interest (SSSI), 17 Areas of Special Scientific Interest (ASSI), 21 Marine Conservation Zones and 14 Nature Conservation Marine Protected Areas (NC MPA, Scotland).

For all the boundaries added to the database, the key WDPA data was obtained from the Protected Planet website (for the unique identification numbers of MPAs), and official sources⁹ of the various states (for the designation years and areas). When not indicated in designation decrees or orders, marine areas were calculated using Qgis software.

3.2. Marine species and habitats

To complete the species and habitats section for a site in the database, the species and habitats for which the MPA obtained designation are chosen from a predefined list.¹⁰ Species and habitats within the site can also be included, even if they were not the reason for designation, along with the existence of monitoring programmes to study a given species or habitat as shown in Figure 2.

⁹ From the website of the British and Irish Legal Information Institute (<http://www.bailii.org/>), which publishes the official journals of Ireland and the nations of the United Kingdom

¹⁰ See Annexes 2 and 3

Espèces et habitats marins

Inventaires des espèces marines à statuts présentes:

Espèce	Espèces OSPAR	Espèce présente	Espèces justifiant la désignation du site en AMP	Suivis effectués	Organismes en charge des suivis
classe: Actinopterygii					
<i>Acipenser sutor</i>	x	Donnée non reportée	Non	Donnée non reportée	Donnée non reportée
<i>Alburnoides bipunctatus</i>		Donnée non reportée	Non	Donnée non reportée	Donnée non reportée
<i>Alosa alosa</i>	x	Donnée non reportée	Non	Donnée non reportée	Donnée non reportée
<i>Alosa fallax</i>		Donnée non reportée	Non	Donnée non reportée	Donnée non reportée
<i>Anguilla anguilla</i>	x	Donnée non reportée	Non	Donnée non reportée	Donnée non reportée
<i>Coregonus lavareus oxyrinchus</i>	x	Donnée non reportée	Non	Donnée non reportée	Donnée non reportée
<i>Cottus gobio</i>		Donnée non reportée	Non	Donnée non reportée	Donnée non reportée
<i>Esox lucius</i>		Donnée non reportée	Non	Donnée non reportée	Donnée non reportée
<i>Gadus morhua</i>	x	Donnée non reportée	Non	Donnée non reportée	Donnée non reportée

Habitat	Habitat présent	Habitat justifiant la désignation du site en AMP	Suivis effectués	Organismes en charge des suivis
Habitats listés dans l'annexe I de la directive "Habitats"				
1110: Bancs de sable à faible couverture permanente d'eau marine	Oui	Non	Donnée non reportée	Donnée non reportée
1130: Estuaires	Donnée non reportée	Non	Donnée non reportée	Donnée non reportée
1140: Replats boueux ou sableux exondés à marée basse	Oui	Non	Donnée non reportée	Donnée non reportée
1150: Lagunes côtières	Donnée non reportée	Non	Donnée non reportée	Donnée non reportée
1160: Grandes criques et baies peu profondes	Donnée non reportée	Non	Donnée non reportée	Donnée non reportée
1170: Récifs	Oui	Non	Donnée non reportée	Donnée non reportée
1180: Structures sous-marines causées par des émissions de gaz	Donnée non reportée	Non	Donnée non reportée	Donnée non reportée

Figure 2: Excerpt from the data input module for species and habitats

To find out the species and habitats of interest for designation, various sources were used:

- The Standard Data Forms for Natura 2000 network sites, which are available on the following websites:
 - o For Ireland: <https://www.npws.ie/protected-sites/sac> (SAC/SCI) and <https://www.npws.ie/protected-sites/spa> (SPA)
 - o For the United Kingdom: <http://jncc.defra.gov.uk/page-1458> (SAC/SCI) and <http://jncc.defra.gov.uk/page-1400> (SPA)
- The Ramsar Information Sheets for sites created under the Ramsar Convention: <http://jncc.defra.gov.uk/page-1390>
- The designation orders for MCZs: <https://www.gov.uk/government/collections/marine-conservation-zone-designations-in-england>
- The designation orders for Nature Conservation MPAs [Scotland]: <http://www.snh.gov.uk/protecting-scotlands-nature/protected-areas/national-designations/mpas/>

- The designation orders for ASSIs: https://www.daera-ni.gov.uk/search?query=assi&edit-submit-button=Go&as_sfid=AAAAAAWdwLFj5Q5Pigqe2ZP-DDpU8OEJ2u2iBOZnpPMfeLCGGlyD4r34klrc5AyU5m1byyCHNGbwKkM-qB-77v9Ui7Be0LHN-EYQNTGF66JwjVChA%3D%3D&as_fid=mWa2XxJu37za-Zg51Z04
- The databases for designated SSSIs:
 - o For Scotland: <https://www.ros.gov.uk/services/registration/sssi>
 - o For England: <https://designatedsites.naturalengland.org.uk/SiteSearch.aspx>

During the project, this section was completed for all MPAs in the marine sub-region of the Celtic Seas. For some intertidal MPAs, the species that justified designation were not found in the predefined list in the database. This is particularly the case for shorebirds/waders, for which a number of species were not included in the database, or for certain species justifying UK MCZ designation (Features of Conservation Importance).¹¹ Consequently, in theory, some sites (mainly terrestrial) in the database may not have any qualifying species listed.

3.3. Activities and regulations

To complete the activities and regulations section, the activities practised within the MPA were selected from a proposed list along with information on how the activities are regulated, where available. This is shown in Figure 3. This was conducted using two approaches, depending on the availability of information:

- where information was already available, either from designation decrees/orders (as is the case for Ramsar sites for which the designation form has a section dedicated to activities), or collected by the managing bodies (as is the case for the JNCC, which compiles information on British offshore MPAs: <http://jncc.defra.gov.uk/page-6895>), it was directly integrated into the database.
- Where no information was available, the presence of certain activities in the MPAs was added by over-laying the MPA layer with layers of other geographic information available online.

The layers of geographic information were collected from various sources:

- Republic of Ireland: downloaded from Ireland's Marine Atlas developed by the Marine Institute (<http://atlas.marine.ie/#?c=53.9108;-15.9082;6>). The data collected covers fishing in

¹¹ The JNCC details all MCZ Features of Conservation Importance on its website: <http://jncc.defra.gov.uk/page-4527>

inshore waters, energy infrastructure (gas extraction and pipelines), maritime traffic and aquaculture.

- UK: information downloaded on licensed offshore activities from The Crown Estate website (<https://www.thecrownestate.co.uk/energy-minerals-and-infrastructure/downloads/maps-and-gis-data/>), and vessel density via the AIS system from data.gov.uk (<https://data.gov.uk/data/search?q=MMO%201066%20AIS>). This data covers extraction activities (marine aggregates, gas extraction), renewable energy, submarine communications cables, pipelines and maritime traffic.
- Scotland: in addition to information gathered for the United Kingdom, data on commercial fishing provided by the Scottish Government was downloaded from the Marine Scotland Data website (<http://live-marinedatascotland.getnucivic.com/dataset/scotmap-inshore-fisheries-mapping-scotland-recording-fishermen%E2%80%99s-use-sea>, <http://live-marinedatascotland.getnucivic.com/dataset/2009-2013-amalgamated-vms-intensity-layers>)

For regulations, only those related to reducing the risk of marine habitat deterioration from commercial fishing gear were integrated in the database. This information was collected via FishingNET, which provides documents on fishing management in Irish Natura 2000 sites (<http://www.fishingnet.ie/sea-fisheriesinnaturaareas/>).

Réglementation

Organismes de contrôle en mer qui interviennent dans l'AMP pour faire appliquer sa réglementation:

Donnée non disponible
 Donnée non reportée
 Aucun
 Agents de l'AMP
 Contrôle des pêches
 Douanes
 Autres, merci de préciser

Usages et activités anthropiques pratiqués soumis à réglementation:

Activité	Activité pratiquée sur la zone	Réglementation	Fréquence	Application de la réglementation sur un ou plusieurs habitats	Réglementation effectivement respectée
Activités militaires	Donnée non rep...	Donnée non rep...	Fréquence non ...	110: Bancs de sable à faible couverture perm; 1130: Estuaires 1140: Replats boueux ou sableux exondés à ma 1150: Lagunes côtières	Donnée non rep...
Ancrage, mouillage	Donnée non rep...	Donnée non rep...	Fréquence non ...	110: Bancs de sable à faible couverture perm; 1130: Estuaires 1140: Replats boueux ou sableux exondés à ma 1150: Lagunes côtières	Donnée non rep...
Baignade	Donnée non rep...	Donnée non rep...	Fréquence non ...	110: Bancs de sable à faible couverture perm; 1130: Estuaires 1140: Replats boueux ou sableux exondés à ma 1150: Lagunes côtières	Donnée non rep...
Canneurs professionnels	Donnée non rep...	Donnée non rep...	Fréquence non ...	110: Bancs de sable à faible couverture perm; 1130: Estuaires 1140: Replats boueux ou sableux exondés à ma 1150: Lagunes côtières	Donnée non rep...
Cerf-Volant	Donnée non rep...	Donnée non rep...	Fréquence non ...	110: Bancs de sable à faible couverture perm; 1130: Estuaires 1140: Replats boueux ou sableux exondés à ma 1150: Lagunes côtières	Donnée non rep...
Char à Voile/Speed sailing	Donnée non rep...	Donnée non rep...	Fréquence non ...	110: Bancs de sable à faible couverture perm; 1130: Estuaires 1140: Replats boueux ou sableux exondés à ma 1150: Lagunes côtières	Donnée non rep...
Chasse sous-marine	Donnée non rep...	Donnée non rep...	Fréquence non ...	110: Bancs de sable à faible couverture perm; 1130: Estuaires 1140: Replats boueux ou sableux exondés à ma 1150: Lagunes côtières	Donnée non rep...

Figure 3: Excerpt from the data input module for regulations

4. ANALYSIS

4.1. Celtic Seas MPA network and geographic representativeness

Consulting the NEA Database via queries enables users to select all MPAs in OSPAR Region III, the Celtic Seas, and generate figures and a comprehensive map of the network as illustrated in Figures 4 - 7.

It is important to bear in mind that statistics calculated through this SIMCelt action relate only to OSPAR Region III which does not cover the entirety of waters under the jurisdiction of France, the UK and Ireland. Therefore, figures presented in this report cannot be compared with national statistics available for each of the countries concerned.

Table 4: MPA number and coverage statistics by category for the OSPAR Celtic Seas Region

	France		United Kingdom		Ireland	
	Number of sites	Total area covered (km ²)	Number of sites	Total area covered (km ²)	Number of sites	Total area covered (km ²)
Wetlands of International Importance (Ramsar)	1	360 km ²	22	1506 km ²	<i>Not assessed</i>	<i>Not assessed</i>
Biosphere Reserve (UNESCO)	1	1642 km ²			<i>Not assessed</i>	<i>Not assessed</i>
OSPAR MPA	9	7175 km ²	120	38711 km ²	15	1587 km ²
Natura 2000 (Birds Directive)	14	4455 km ²	43	5696 km ²	93	2306 km ²
Natura 2000 (Habitats Directive)	20	5289 km ²	57	11911 km ²	76	4833 km ²
Marine Nature Park	1	3431 km ²				
Nature Reserve (National and Regional)	5	13 km ²				
Biotope Protection by law	2	< 1 km ²				
Marine State Property managed by Conservatoire du Littoral	1	1 km ²				
Site of Special Scientific Interest			149	1689 km ²		
Area of Special Scientific Interest			17	83 km ²		
Marine Nature Reserve			2	177 km ²		
Nature Conservation MPA			14	14102 km ²		
Marine Conservation Zone			21	8447 km ²		
Natural Heritage Area					<i>Not assessed</i>	<i>Not assessed</i>
Nature Reserve					<i>Not assessed</i>	<i>Not assessed</i>
Whole MPA Network	54	6506 km²	445	24148 km²	184	4744 km²

The map also includes MPAs in the process of being designated, which have not been integrated into the NEA. In France, for example, this applies to the designation of Natura 2000 sites beyond territorial

waters for seabirds, cetaceans and deep reefs (information from AFB, July 2017). For the UK, the designation of Natura 2000 sites for marine birds and cetaceans and designation of a new tranche of MCZs have been taken into account (information from JNCC, July 2017). No information from the Republic of Ireland on a potential extension to its network of MPAs is currently available.

The map, if French and UK MPAs in the process of being designated are not taken into account, shows that the network is mainly comprised of relatively small coastal sites protected under several types of MPAs. In a 2015 report assessing the network of MPAs in the biogeographical region of the Celtic Seas,¹² the University of Plymouth proposes a method for assessing geographic representativeness, which was used in this work.¹³ The study area differs between the two studies: for the SIMCelt project, OSPAR Region III - Celtic Seas was used¹⁴ while the University of Plymouth analysis involved a slightly larger area. The boundaries used for offshore waters and inshore waters (within and beyond 12 NM) were taken from the Flanders Marine Institute database.¹⁵ To avoid counting areas twice in the estimate of the network's total area, MPAs with overlapping boundaries were merged. Areas were calculated using World Cylindrical Equal Area Projection in order to minimise area discrepancies from reality across all points of the study zone.

¹² Rees, S. et al. 2015. Assessment of the Ecological Coherence of the MPA Network in the Celtic Seas: A report for WWF-UK by the Marine Institute, Plymouth University and The Marine Biological Association of the United Kingdom

¹³ See Table 2

¹⁴ Region III, the Celtic Seas, extends between 60° N and 48° N and between 5° W and the west coast of Great Britain to the 200m depth contour to the west of 6° W. The French government asked the OSPAR Commission to extend this marine region along its coasts from 48° N to Mont-Saint-Michel Bay.

¹⁵ <http://www.marineregions.org/>

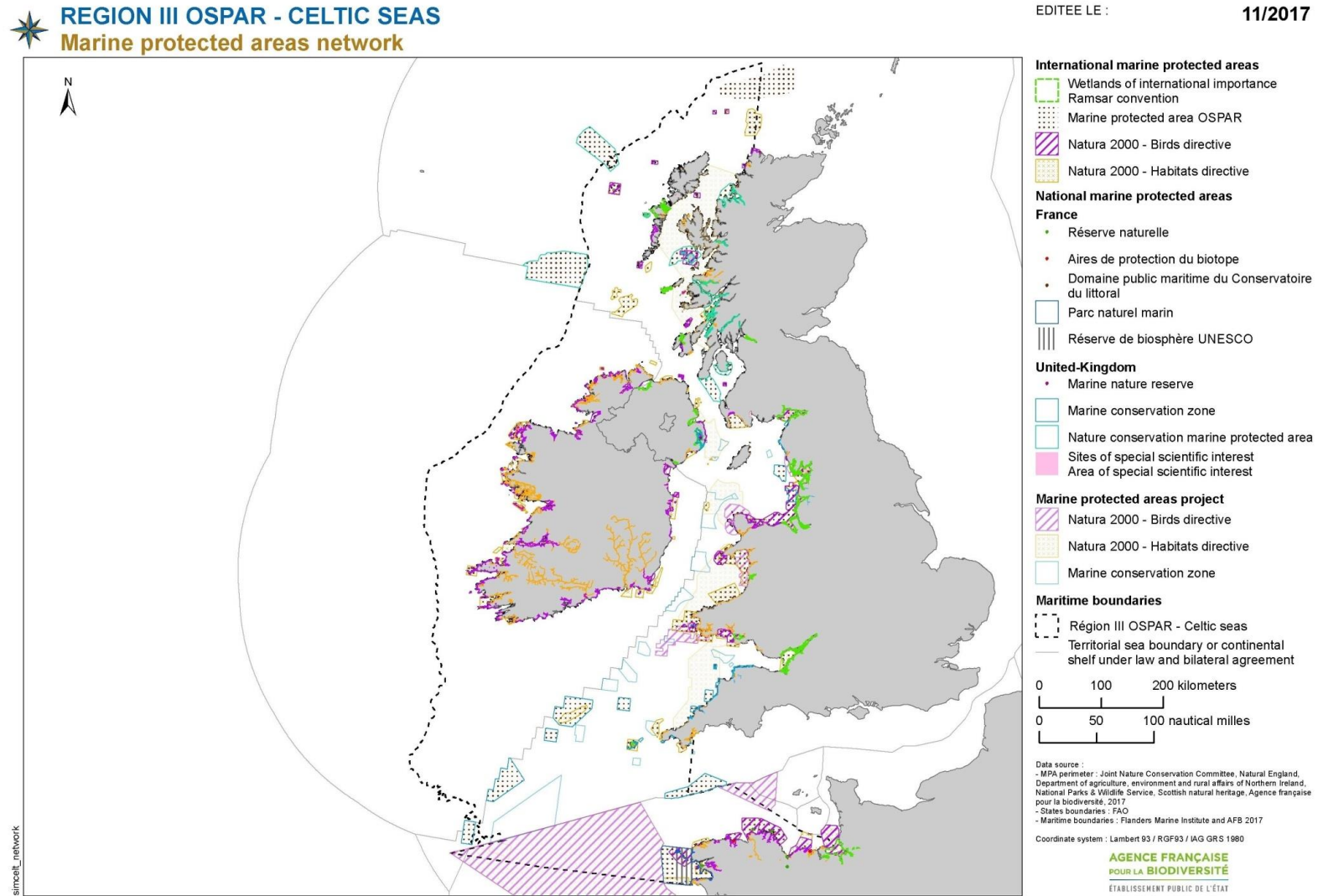


Figure 4: Map of the network of Marine Protected Areas in the Celtic Seas

Table 5: Spatial coverage of the MPA network within OSPAR Region III Celtic Seas

Country	Area of national waters within OSPAR Region III (km ²)	Current Number of MPAs	Area covered by the current MPA network within OSPAR Region III (km ²)	Percentage coverage in relation to Aichi target (10%)	Number of MPAs in process of being designated	Area covered by the potential MPA network within OSPAR Region III (km ²)	Projected coverage in relation to Aichi target (10%)
Ireland	145,975	184	4744	(3.2%)	0	4744	(3.2%)
<i>Inshore waters (0-12nm)</i>	37522	184	4744	(12.6%)	0	4744	(12.6%)
<i>offshore waters (12-200nm)***</i>	108,453	0	0	(0%)	0	0	(0%)
United Kingdom	197,839	445	24,148	(12.2%)	34	64,576	(32.6%)
<i>Inshore waters (0-12nm)</i>	92,186	411	15458	(16.8%)	28	37,877	(41.1%)
<i>offshore waters (12-200nm)</i>	105,653	30	8690	(8.2%)	21	26,699	(25.3%)
France	43,726	54	6506	(14.9%)	5	29,368	(67%)
<i>Inshore waters (0-12nm)</i>	11,735	54	6506	(55.4 %)	0	6506	(55.4%)
<i>offshore waters (12-200nm)</i>	31,991	0	0	(0%)	5	22862	(71.4%)
Total	387,550	683	35,399	(9.1%)	39	98,615	(25.4%)

*** Refers only to the portion of waters in OSPAR Region III

OSPAR Region III covers 387,550 km² and contains a network of 683 MPAs representing an area of 35,399 km², i.e. 9.1% of the zone's area. This is below the 10% target set at CBD COP 10 in Nagoya, Japan in 2010 (Aichi Targets), but underplays considerable regional disparities. If these figures are examined at a national scale, the United Kingdom and France (12.2% and 14.9% respectively) meet the target.

However, if examined at yet another scale, according to the distance from coast, it can be seen that the three countries are actually in a relatively similar situation with respect to the target. Their network of MPAs is significantly comprised of coastal sites and each country meets the 10% target for their inshore waters (Ireland: 12.6%, United Kingdom: 16.8%, France: 54.8%). However, offshore waters are poorly represented. For OSPAR Region III, Ireland and France do not have any MPAs in this zone and the United Kingdom has an MPA network which, with 8.2% of the area of its offshore waters, is closer

to the Aichi target. Again it should be noted that these figures vary according to what definition of the Celtic Seas is used.

The future is promising for the spatial coverage of the MPA network in the Celtic Seas. If the proposed sites for the United Kingdom and France are considered¹⁶, the areas covered by at least one designation would lead to protection of 32.6% and 67% of their waters respectively, which means that 25.4% of the Celtic Seas would be covered by an MPA designation. To achieve these numbers, the two countries plan to implement different strategies. France plans to designate vast areas in its offshore waters (5 MPAs that cover 71.4% of the zone). The United Kingdom also plans to designate large offshore zones (offshore waters covered by MPAs would increase from 8.2% to 25.33%) and also expand its network in its inshore waters (from 16.8% to 41.1%).

4.2. Representativeness based on designation objectives

Area of coverage and spatial representativeness are an initial indication for assessing the network of MPAs. The NEA database and its attribute fields can be used to analyse the network based on other criteria such as the reason for designation. Spatial queries can be used to select sites by choosing the species and habitats for which those sites were designated from a list.

Maps can then be obtained showing MPAs designated for the protection of at least one benthic habitat (Figure 5), one species of sea bird (Figure 6) and one marine mammal species (Figure 7).

¹⁶ Source: JNCC, July 2017; AFB, July 2017

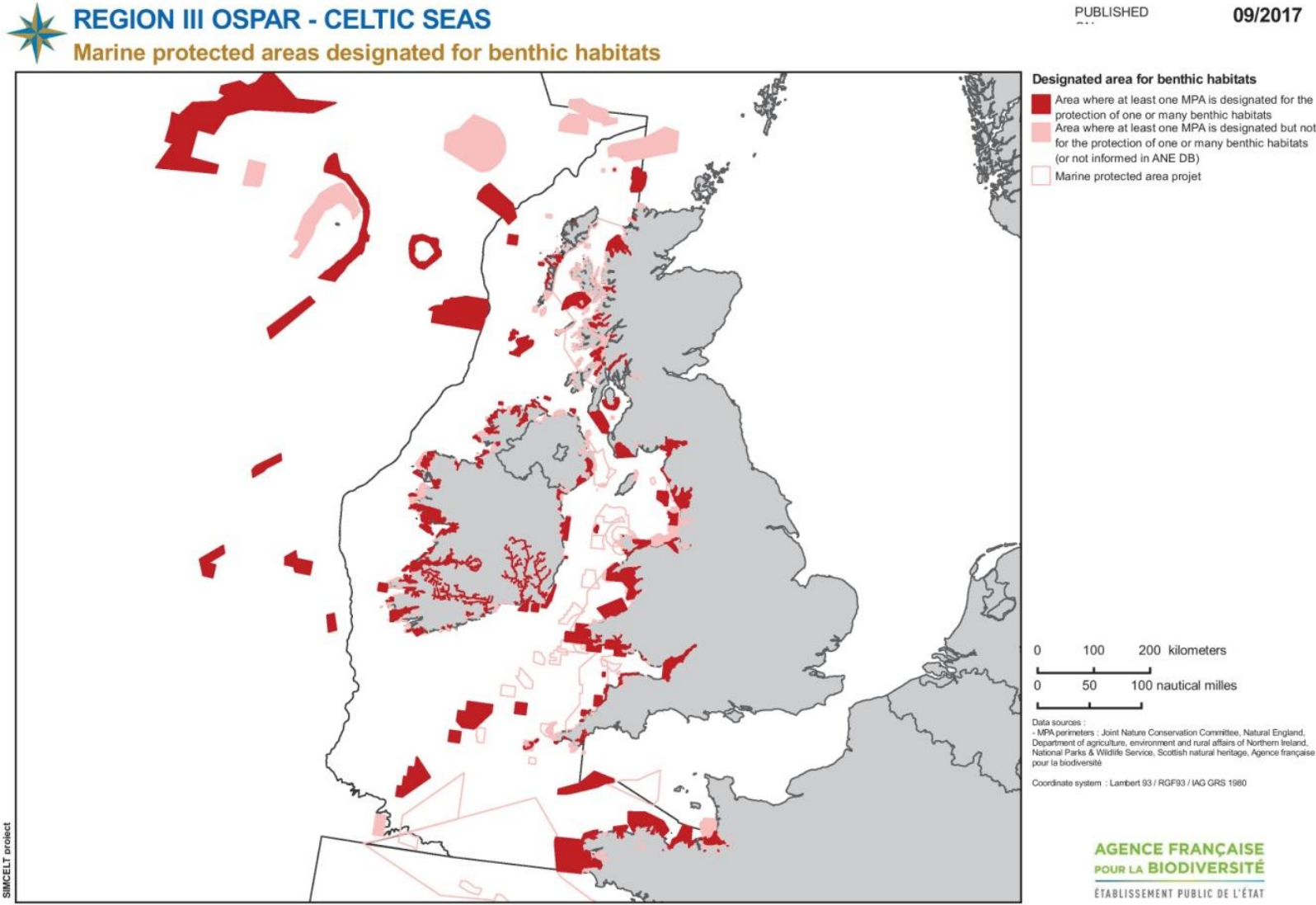


Figure 5: Marine Protected Areas designated for benthic habitats

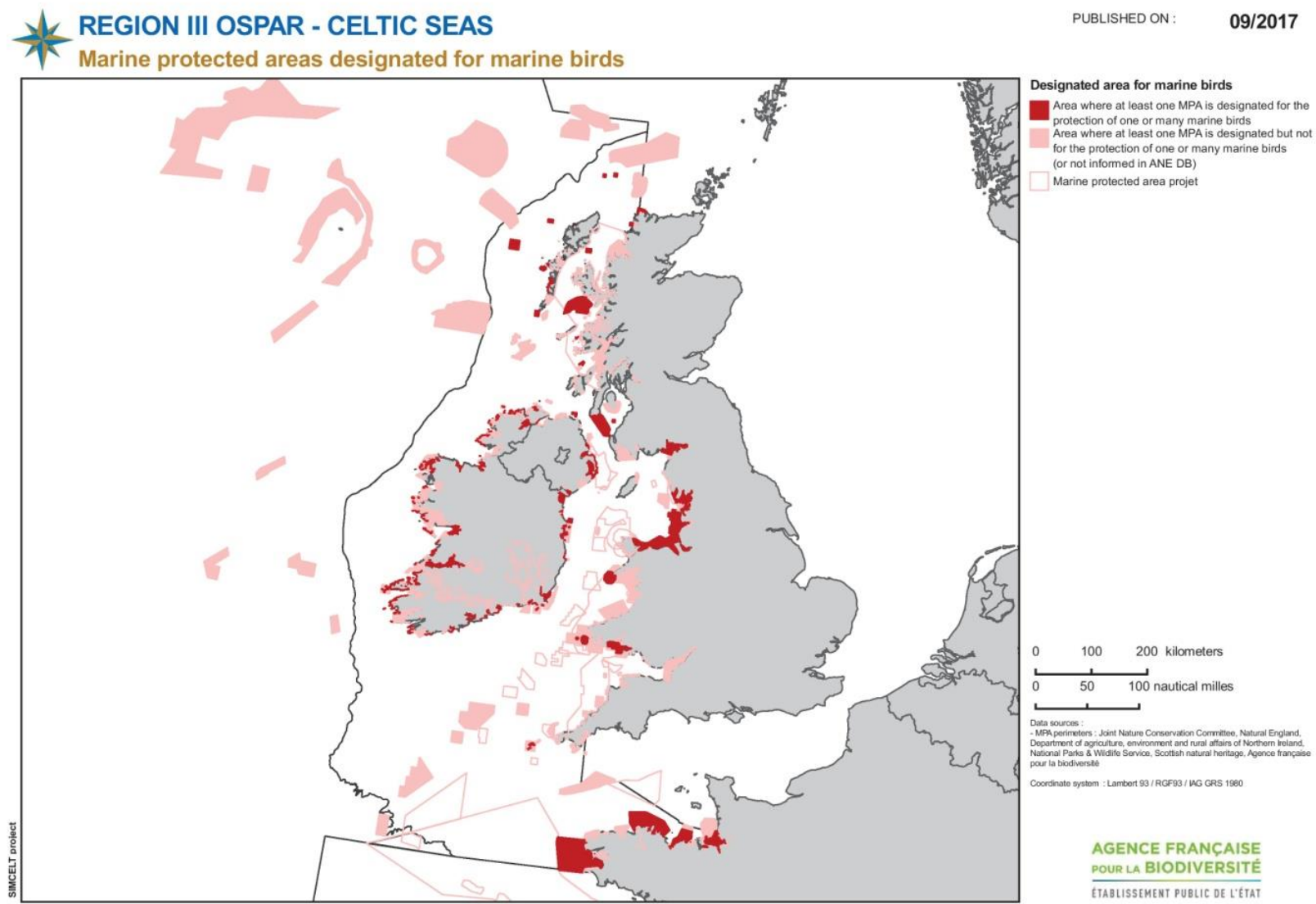


Figure 6: Marine Protected Areas designated for seabirds

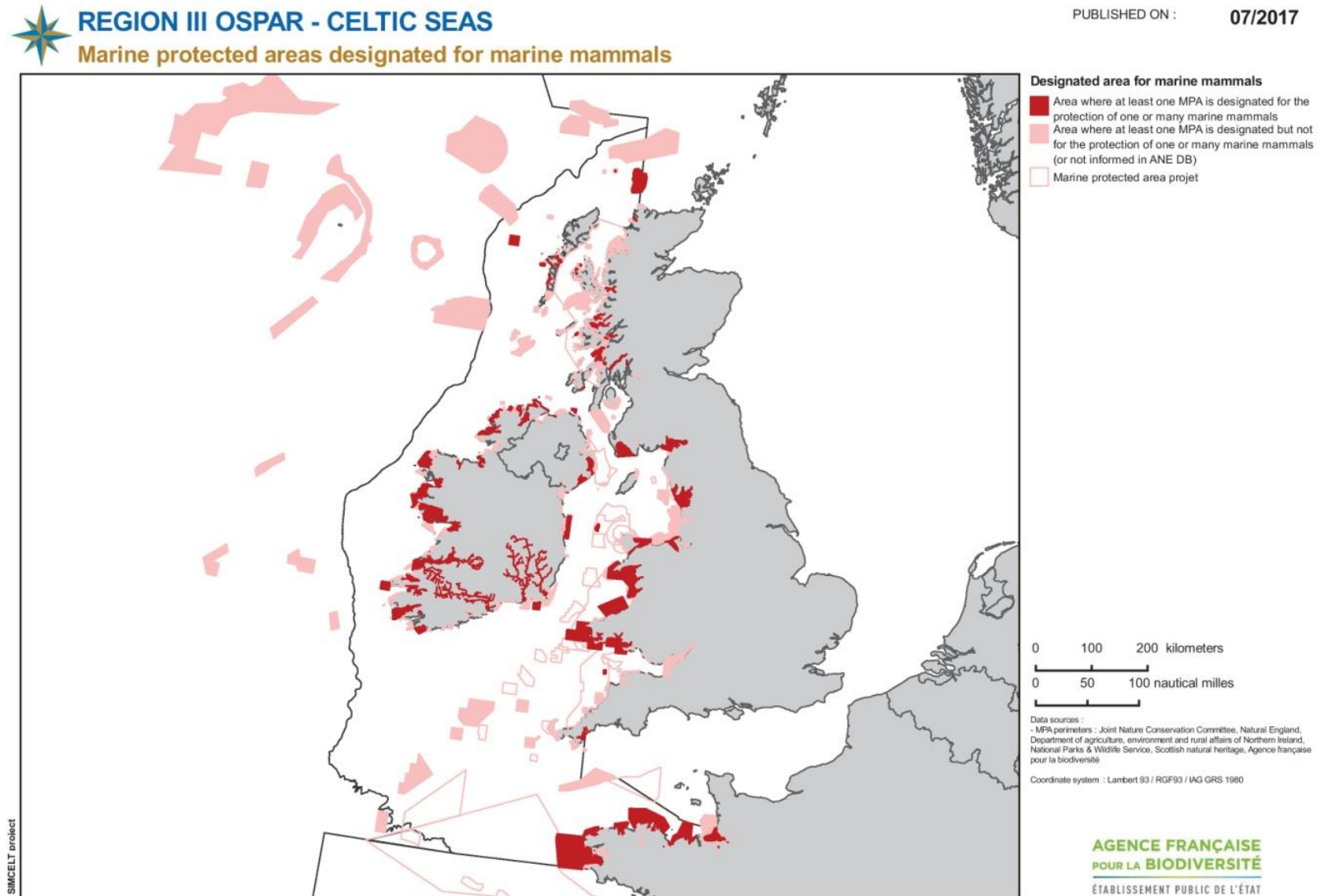


Figure 7: Marine Protected Areas designated for marine mammals

Benthic habitats are often a reason for MPA designation: 64,803 km² of waters are covered by at least one form of MPA, protecting at least one benthic habitat (i.e. approximately 66% of the area covered by at least one MPA). MPAs designated specifically for certain habitats are distributed relatively evenly across the network and within the Celtic Seas region. Designations for habitats in offshore areas are rather poorly covered, but this stems more from the general lack of designated protected areas in offshore waters. As part of implementing MSP in the Celtic Seas, planning of activities that interact with the seabed (bottom trawling, marine aggregate extraction, offshore wind farms, etc.) will have to take the sensitivities of the designated site into consideration.

For mobile species, such as seabirds and marine mammals, the situation is more diverse as Figures 6 and 7 show. The planning processes for maritime sectors in the Celtic Seas should take into account the sensitivities and regulations of these zones concerning marine birds and mammals. This particularly applies to activities that potentially interact with these sensitive species, which are affected by multiple pressures, including fishing (by-catches), maritime traffic and wind farms (collisions), marine renewable energy, maritime traffic or offshore oil exploration (sound disturbances).

4.3. Uses occurring within MPAs

Unlike data on species or habitats for which MPAs are designated, data on activities present and/or regulated within sites are at best, not standardised, and unavailable in the worst cases. For this reason, it was impossible to collect and input this information consistently for all sites. Analysing the network based on these criteria across the study zone therefore seems difficult.

To summarise the information available in the database, a brief overview is given below for information collected regarding activities occurring within MPAs:

- Republic of Ireland: for all sites, the activities addressed include fishing practices in waters within 12 nautical miles, energy infrastructure (gas extraction and pipelines), maritime traffic and aquaculture.
- Scotland: the activities addressed include fishing, mineral extraction activities (aggregates, gas), renewable energies, submarine communication cables, pipelines and maritime traffic. Activities occurring in Ramsar sites and sites beyond territorial waters are available through the designation documents for Ramsar sites and on the JNCC website for offshore sites.
- England, Wales, and Northern Ireland: the activities addressed include extraction activities (aggregates, gas), renewable energies, submarine communication cables, pipelines and maritime traffic. Activities occurring in Ramsar sites and sites beyond territorial waters are available through the designation documents for Ramsar sites and on the JNCC website for offshore sites.
- France: Completion of the activities and regulation section depends on the managing bodies. Some have filled out the fields properly while others have not.

5. CONCLUSIONS

A major update to the data within the NEA database was carried out under the SIMCelt project. Irish MPAs had not previously been included in the database and data on sites within the United Kingdom had not been updated since the end of the INTERREG MAIA (2010-2012) and PANACHE (2013-2015) projects. It was relatively simple to gather data on site boundaries and information on species and habitats was collected for all the sites despite the fact that the process required rather time-consuming investigative work. The real difficulty came with gathering data on activities and regulations specific to the MPAs as there is little or no standardised information available. The main information that was easy to access was geographic information layers on licensed professional activities (extraction, marine renewable energy, etc.) and information that could be easily geo-located (cables, pipelines, maritime traffic via the AIS system). Use of Geographic Information Systems made it possible to observe the overlaps between these activities and MPA boundaries.

The NEA database could be a good decision-making tool for maritime spatial planning. In terms of environmental protection, the data available means that queries can be made to the database to measure the completeness of the network on an international scale. For decision-makers, it also serves to centralise information on the types and categories of MPAs and which provides an indication of whether the site's objectives are compatible with a given activity. Although the information on activities in the database is incomplete, it provides an idea of the interactions they have with natural heritage. It should be noted that compliance with the Aichi targets under the Convention on Biological Diversity and objectives of the EU's nature conservation objectives have to be met at individual Member State level, not at regional sea level.

6. ANNEXES

Annex 1: List of MPAs taken into account in the NEA database for the Celtic Sea area (OSPAR Region III)

Note those SCIs highlighted in green have been designated as SACs since this work concluded.

Country	Category	Name	Status
FRA	Biosphere reserve	ILES ET MER D'IROISE	Designated
FRA	Biotope protection by law	ILE DE LA COLOMBIERE	Designated
FRA	Biotope protection by law	ILOTS DE LA BAIE DE MORLAIX (MARIN)	Designated
FRA	Marine nature park	IROISE	Designated
FRA	Marine protected area (OSPAR)	COTE DE GRANIT ROSE - SEPT-ILES	Designated
FRA	Marine protected area (OSPAR)	IROISE	Designated
FRA	Marine protected area (OSPAR)	BAIE DE SAINT-BRIEUC	Designated
FRA	Marine protected area (OSPAR)	SEPT-ILES	Designated
FRA	Marine protected area (OSPAR)	TREGOR GOELO	Designated
FRA	Marine protected area (OSPAR)	TREGOR GOELO	Designated
FRA	Marine protected area (OSPAR)	ABERS - COTES DES LEGENDES	Designated
FRA	Marine protected area (OSPAR)	BAIE DE MORLAIX	Designated
FRA	Marine protected area (OSPAR)	COTE DE GRANIT ROSE - SEPT-ILES	Designated
FRA	Conservatoire du littoral	SILLON DE TALBERT	Designated
FRA	National nature reserve	SEPT-ILES	Designated
FRA	National nature reserve	BAIE DE SAINT-BRIEUC	Designated
FRA	National nature reserve	[sub-perimeter] BAIE DE SAINT-BRIEUC (zone de protection renforcée)	Designated
FRA	Regional nature reserve	SITES D'INTERET GEOLOGIQUE DE LA PRESQU'ILE DE CROZON	Designated
FRA	Regional nature reserve	SILLON DE TALBERT	Designated
FRA	Site of community importance	BAIE DU MONT SAINT-MICHEL	Designated
FRA	Special area of conservation	COTE DE GRANIT ROSE - SEPT-ILES	Designated
FRA	Special area of conservation	RIVIERE LEGUER, FORETS DE BEFFOU, COAT AN NOZ ET COAT AN HAY	Designated
FRA	Special area of conservation	TREGOR GOELO	Designated
FRA	Special area of conservation	CAP D'ERQUY - CAP FREHEL	Designated
FRA	Special area of conservation	BAIE DE LANCIEUX, BAIE DE L'ARGUENON, ARCHIPEL DE SAINT MALO ET DINARD	Designated
FRA	Special area of conservation	BAIE DE MORLAIX	Designated
FRA	Special area of conservation	ANSE DE GOULVEN, DUNES DE KEREMMA	Designated
FRA	Special area of conservation	ABERS - COTES DES LEGENDES	Designated
FRA	Special area of conservation	OUESSANT-MOLENE	Designated
FRA	Special area of conservation	PRESQU'ILE DE CROZON	Designated
FRA	Special area of conservation	CAP SIZUN	Designated
FRA	Special area of conservation	GUISSENY	Designated
FRA	Special area of conservation	POINTE DE CORSEN, LE CONQUET	Designated
FRA	Special area of conservation	RADE DE BREST, ESTUAIRE DE L'AULNE	Designated
FRA	Special area of conservation	COTE DE CANCALE A PARAMÉ	Designated
FRA	Special area of conservation	BAIE DE SAINT-BRIEUC-EST	Designated
FRA	Special area of conservation	COTES DE CROZON	Designated
FRA	Special area of conservation	CHAUSSEE DE SEIN	Designated
FRA	Special area of conservation	CHAUSEY	Designated
FRA	Special protection area	COTE DE GRANIT ROSE - SEPT-ILES	Designated
FRA	Special protection area	BAIE DU MONT SAINT-MICHEL	Designated
FRA	Special protection area	BAIE DE GOULVEN	Designated
FRA	Special protection area	ILOT DU TREVORS	Designated
FRA	Special protection area	CHAUSEY	Designated
FRA	Special protection area	CAMARET	Designated
FRA	Special protection area	TREGOR GOELO	Designated
FRA	Special protection area	BAIE DE SAINT-BRIEUC-EST	Designated

FRA	Special protection area	RADE DE BREST : BAIE DE DAOULAS, ANSE DE POULMIC	Designated
FRA	Special protection area	CAP SIZUN	Designated
FRA	Special protection area	ILES DE LA COLOMBIERE, DE LA NELLIERE ET DES HACHES	Designated
FRA	Special protection area	BAIE DE MORLAIX	Designated
FRA	Special protection area	CAP D'ERQUY - CAP FREHEL	Designated
FRA	Special protection area	OUESSANT-MOLENE	Designated
FRA	Ramsar	BAIE DU MONT SAINT MICHEL	Designated
FRA	Site of community importance	NATURA 2000 AU LARGE ESPECE - ATLANTIQUE	Project
FRA	Site of community importance	NATURA 2000 AU LARGE RECIFS PROFONDS A	Project
FRA	Site of community importance	NATURA 2000 AU LARGE ESPECE - BRETAGNE NORD	Project
FRA	Special protection area	NATURA 2000 AU LARGE ESPECE - ATLANTIQUE	Project
FRA	Special protection area	NATURA 2000 AU LARGE ESPECE - BRETAGNE NORD	Project
IRL	Marine protected area (OSPAR)	KENMARE RIVER	Designated
IRL	Marine protected area (OSPAR)	KINGSTOWN BAY	Designated
IRL	Marine protected area (OSPAR)	NORTH DUBLIN BAY	Designated
IRL	Marine protected area (OSPAR)	TRAMORE DUNES AND BACKSTRAND	Designated
IRL	Marine protected area (OSPAR)	ROARINGWATER BAY AND ISLANDS	Designated
IRL	Marine protected area (OSPAR)	TRALEE BAY AND MAGHAREES PENINSULA, WEST TO CLOGHANE	Designated
IRL	Marine protected area (OSPAR)	BLASKET ISLANDS	Designated
IRL	Marine protected area (OSPAR)	KILKIERAN BAY AND ISLANDS	Designated
IRL	Marine protected area (OSPAR)	MULROY BAY	Designated
IRL	Marine protected area (OSPAR)	MULLET/BLACKSOD BAY COMPLEX	Designated
IRL	Marine protected area (OSPAR)	MALAHIDE ESTUARY	Designated
IRL	Marine protected area (OSPAR)	CUMMEEN STRAND/DRUMCLIFF BAY (SLIGO BAY)	Designated
IRL	Marine protected area (OSPAR)	BALLYNESS BAY	Designated
IRL	Marine protected area (OSPAR)	DUNDALK BAY	Designated
IRL	Marine protected area (OSPAR)	GALWAY BAY COMPLEX	Designated
IRL	Site of community importance	GREAT ISLAND CHANNEL	Designated
IRL	Site of community importance	NORTH DUBLIN BAY	Designated
IRL	Site of community importance	CARROWMORE DUNES	Designated
IRL	Site of community importance	LAMBAY ISLAND	Designated
IRL	Site of community importance	TRAMORE DUNES AND BACKSTRAND	Designated
IRL	Site of community importance	MAGHAREE ISLANDS (designated as SAC on 12/10/2017)	Designated
IRL	Site of community importance	CARNSORE POINT (designated as SAC on 12/10/2016)	Designated
IRL	Site of community importance	BALLYMACODA (CLONPRIEST AND PILLMORE) (designated as SAC on 22/11/2017)	Designated
IRL	Site of community importance	CLONAKILTY BAY	Designated
IRL	Site of community importance	SHEEPHAVEN	Designated
IRL	Site of community importance	COURTMACSHERRY ESTUARY	Designated
IRL	Site of community importance	INISHEER ISLAND	Designated
IRL	Site of community importance	CLEW BAY COMPLEX	Designated
IRL	Site of community importance	TRALEE BAY AND MAGHAREES PENINSULA, WEST TO CLOGHANE	Designated
IRL	Site of community importance	SLYNE HEAD PENINSULA	Designated
IRL	Site of community importance	KILKIERAN BAY AND ISLANDS	Designated
IRL	Site of community importance	MULROY BAY	Designated
IRL	Site of community importance	RIVER BARROW AND RIVER NORE	Designated
IRL	Site of community importance	LOWER RIVER SHANNON	Designated
IRL	Site of community importance	BLACKWATER RIVER (CORK/WATERFORD)	Designated
IRL	Site of community importance	BLASKET ISLANDS	Designated
IRL	Site of community importance	TORY ISLAND COAST (designated as SAC on 22/12/2017)	Designated
IRL	Site of community importance	KILKEE REEFS	Designated
IRL	Site of community importance	ACHILL HEAD (designated as SAC on 6/2/2018)	Designated
IRL	Site of community importance	RUTLAND ISLAND AND SOUND	Designated
IRL	Site of community importance	BLACKWATER BANK (designated as SAC on 7/4/2017)	Designated
IRL	Site of community importance	WEST CONNACHT COAST	Designated
IRL	Site of community importance	ROCKABILL TO DALKEY ISLAND	Designated
IRL	Site of community importance	BALLYSADARE BAY	Designated
IRL	Site of community importance	BALLYNESS BAY	Designated
IRL	Site of community importance	BALLYTEIGE BURROW	Designated

IRL	Site of community importance	BOYNE COAST AND ESTUARY	Designated
IRL	Site of community importance	BROADHAVEN BAY	Designated
IRL	Site of community importance	CARROWMORE POINT TO SPANISH POINT AND ISLANDS	Designated
IRL	Site of community importance	CONNEMARA BOG COMPLEX	Designated
IRL	Site of community importance	GWEEDORE BAY AND ISLANDS	Designated
IRL	Site of community importance	HORN HEAD AND RINCLEVAN	Designated
IRL	Site of community importance	KENMARE RIVER	Designated
IRL	Site of community importance	KILLALA BAY/MOY ESTUARY	Designated
IRL	Site of community importance	LOUGH SWILLY	Designated
IRL	Site of community importance	NORTH INISHOWEN COAST	Designated
IRL	Site of community importance	RATHLIN O'BIRNE ISLAND (designated as SAC on 12/10/2017)	Designated
IRL	Site of community importance	RAVEN POINT NATURE RESERVE	Designated
IRL	Site of community importance	SLANEY RIVER VALLEY	Designated
IRL	Site of community importance	STREEDAGH POINT DUNES (designated as SAC on 6/2/2018)	Designated
IRL	Site of community importance	VALENCIA HARBOUR/PORTMAGEE CHANNEL	Designated
IRL	Site of community importance	BLACK HEAD-POULSALLAGH COMPLEX	Designated
IRL	Site of community importance	GLENGARRIFF HARBOUR AND WOODLAND	Designated
IRL	Site of community importance	LOUGH HYNE NATURE RESERVE AND ENVIRONS	Designated
IRL	Site of community importance	ROARINGWATER BAY AND ISLANDS	Designated
IRL	Site of community importance	DONEGAL BAY (MURVAGH)	Designated
IRL	Site of community importance	SLIEVE LEAGUE	Designated
IRL	Site of community importance	SLIEVE TOOHEY/TORMORE ISLAND/LOUGHROS BEG BAY	Designated
IRL	Site of community importance	TRANAROSSAN AND MELMORE LOUGH	Designated
IRL	Site of community importance	WEST OF ARDARA/MAAS ROAD	Designated
IRL	Site of community importance	BALDOYLE BAY	Designated
IRL	Site of community importance	MALAHIDE ESTUARY	Designated
IRL	Site of community importance	ROGERSTOWN ESTUARY	Designated
IRL	Site of community importance	INISHMAAN ISLAND	Designated
IRL	Site of community importance	INISHMORE ISLAND	Designated
IRL	Site of community importance	GALWAY BAY COMPLEX	Designated
IRL	Site of community importance	INISHBOFIN AND INISHSHARK	Designated
IRL	Site of community importance	SLYNE HEAD ISLANDS	Designated
IRL	Site of community importance	CASTLEMAINE HARBOUR	Designated
IRL	Site of community importance	DUNDALK BAY	Designated
IRL	Site of community importance	MULLET/BLACKSOD BAY COMPLEX	Designated
IRL	Site of community importance	BUNDUFF LOUGH AND MACHAIR/TRAWALUA/MULL	Designated
IRL	Site of community importance	CUMMEEN STRAND/DRUMCLIFF BAY (SLIGO BAY)	Designated
IRL	Site of community importance	BANNOW BAY	Designated
IRL	Site of community importance	SALTEE ISLANDS	Designated
IRL	Site of community importance	HOOK HEAD (designated as a SAC on 15/11/2017)	Designated
IRL	Site of community importance	BARLEY COVE TO BALLYRISODE POINT	Designated
IRL	Special area of conservation	KERRY HEAD SHOAL	Designated
IRL	Special area of conservation	HEMPTON'S TURBOT BANK	Designated
IRL	Special area of conservation	LONG BANK	Designated
IRL	Special area of conservation	WICKLOW REEF	Designated
IRL	Special protection area	CASTLEMAINE HARBOUR	Designated
IRL	Special protection area	CORK HARBOUR	Designated
IRL	Special protection area	BALLYMACODA BAY	Designated
IRL	Special protection area	NORTH BULL ISLAND	Designated
IRL	Special protection area	RIVER NANNY ESTUARY AND SHORE	Designated
IRL	Special protection area	WICKLOW HEAD	Designated
IRL	Special protection area	LAMBAY ISLAND	Designated
IRL	Special protection area	SOUTH DUBLIN BAY AND RIVER TOLKA ESTUARY	Designated
IRL	Special protection area	THE RAVEN	Designated
IRL	Special protection area	BALLYTEIGUE BURROW	Designated
IRL	Special protection area	OLD HEAD OF KINSALE	Designated
IRL	Special protection area	BALLYCOTTON BAY	Designated
IRL	Special protection area	BROADMEADOW/SWORDS ESTUARY	Designated
IRL	Special protection area	DUNDALK BAY	Designated

IRL	Special protection area	TRAMORE BACK STRAND	Designated
IRL	Special protection area	BLACKWATER ESTUARY	Designated
IRL	Special protection area	INNER GALWAY BAY	Designated
IRL	Special protection area	DUNGARVAN HARBOUR	Designated
IRL	Special protection area	BANNOW BAY	Designated
IRL	Special protection area	TRAWBREAGA BAY	Designated
IRL	Special protection area	CUMMEEN STRAND	Designated
IRL	Special protection area	KILLALA BAY/MOY ESTUARY	Designated
IRL	Special protection area	BLACKSOD BAY/BROADHAVEN	Designated
IRL	Special protection area	THE BULL AND THE COW ROCKS	Designated
IRL	Special protection area	INISHMURRAY	Designated
IRL	Special protection area	TORY ISLAND	Designated
IRL	Special protection area	ILLANMASTER	Designated
IRL	Special protection area	LOUGH SWILLY	Designated
IRL	Special protection area	WEXFORD HARBOUR AND SLOBS	Designated
IRL	Special protection area	RIVER SHANNON AND RIVER FERGUS ESTUARIES	Designated
IRL	Special protection area	BOYNE ESTUARY	Designated
IRL	Special protection area	CLONAKILTY BAY	Designated
IRL	Special protection area	INISHBOFIN, INISHDOOEY AND INISHBEG	Designated
IRL	Special protection area	INISHGLORA AND INISHKEERAGH	Designated
IRL	Special protection area	LOUGH FOYLE	Designated
IRL	Special protection area	TERMONCARRAGH LAKE AND ANNAGH MACHAIR	Designated
IRL	Special protection area	DUVILLAUN ISLANDS	Designated
IRL	Special protection area	ILLAUNONEARAUN	Designated
IRL	Special protection area	INISHDUFF	Designated
IRL	Special protection area	INISHKEEL	Designated
IRL	Special protection area	IRELAND'S EYE	Designated
IRL	Special protection area	KEERAGH ISLANDS	Designated
IRL	Special protection area	LOOP HEAD	Designated
IRL	Special protection area	RATHLIN O'BIRNE ISLAND	Designated
IRL	Special protection area	ROANINISH	Designated
IRL	Special protection area	SKERRIES ISLANDS	Designated
IRL	Special protection area	SOVEREIGN ISLANDS	Designated
IRL	Special protection area	MAGHAREE ISLANDS	Designated
IRL	Special protection area	BALLYSADARE BAY	Designated
IRL	Special protection area	ILLANCRONE AND INISHKEERAGH	Designated
IRL	Special protection area	AUGHRIS HEAD	Designated
IRL	Special protection area	CLARE ISLAND	Designated
IRL	Special protection area	HIGH ISLAND, INISHSHARK AND DAVILLAUN	Designated
IRL	Special protection area	WEST DONEGAL COAST	Designated
IRL	Special protection area	DONEGAL BAY	Designated
IRL	Special protection area	INISHMORE	Designated
IRL	Special protection area	DINGLE PENINSULA	Designated
IRL	Special protection area	IVERAGH PENINSULA	Designated
IRL	Special protection area	BEARA PENINSULA	Designated
IRL	Special protection area	SHEEP'S HEAD TO TOE HEAD	Designated
IRL	Special protection area	CRUAGH ISLAND	Designated
IRL	Special protection area	DALKEY ISLANDS	Designated
IRL	Special protection area	MID-CLARE COAST	Designated
IRL	Special protection area	THE MURROUGH	Designated
IRL	Special protection area	KERRY HEAD	Designated
IRL	Special protection area	SEVEN HEADS	Designated
IRL	Special protection area	HELVICK HEAD TO BALLYQUIN	Designated
IRL	Special protection area	MID-WATERFORD COAST	Designated
IRL	Special protection area	COURTMACSHERRY BAY	Designated
IRL	Special protection area	ILLAUNNANOON	Designated
IRL	Special protection area	FALCARRAGH TO MEENLARAGH	Designated
IRL	Special protection area	SLYNE HEAD TO ARDMORE POINT ISLANDS	Designated
IRL	Special protection area	TRALEE BAY COMPLEX	Designated

IRL	Special protection area	WEST DONEGAL ISLANDS	Designated
IRL	Special protection area	BALDOYLE BAY	Designated
IRL	Special protection area	CARLINGFORD LOUGH	Designated
IRL	Special protection area	GALLEY HEAD TO DUNEEN POINT	Designated
IRL	Special protection area	HORN HEAD TO FANAD HEAD	Designated
IRL	Special protection area	HOWTH HEAD COAST	Designated
IRL	Special protection area	DEENISH ISLAND AND SCARIFF ISLAND	Designated
IRL	Special protection area	DOOGORT MACHAIR	Designated
IRL	Special protection area	TACUMSHIN LAKE	Designated
IRL	Special protection area	GREERS ISLE	Designated
IRL	Special protection area	SALTEE ISLANDS	Designated
IRL	Special protection area	PUFFIN ISLAND	Designated
IRL	Special protection area	INISHKEA ISLANDS	Designated
IRL	Special protection area	CLIFFS OF MOHER	Designated
IRL	Special protection area	SKELLIGS	Designated
IRL	Special protection area	BLASKET ISLANDS	Designated
IRL	Special protection area	LADY'S ISLAND LAKE	Designated
IRL	Special protection area	DRUMCLIFF BAY	Designated
IRL	Special protection area	ROGERSTOWN ESTUARY	Designated
IRL	Special protection area	ROCKABILL	Designated
UK	Area of special scientific interest	RATHLIN ISLAND COAST	Designated
UK	Area of special scientific interest	LARNE LOUGH	Designated
UK	Area of special scientific interest	STRANGFORD LOUGH PART 1	Designated
UK	Area of special scientific interest	STRANGFORD LOUGH PART 2	Designated
UK	Area of special scientific interest	STRANGFORD LOUGH PART 3	Designated
UK	Area of special scientific interest	MURLOUGH	Designated
UK	Area of special scientific interest	BANN ESTUARY	Designated
UK	Area of special scientific interest	CARLINGFORD LOUGH	Designated
UK	Area of special scientific interest	GIANT'S CAUSEWAY AND DUNSEVERICK	Designated
UK	Area of special scientific interest	LOUGH FOYLE	Designated
UK	Area of special scientific interest	KILLOUGH BAY AND STRAND LOUGH	Designated
UK	Area of special scientific interest	OUTER ARDS	Designated
UK	Area of special scientific interest	THE GOBBINS	Designated
UK	Area of special scientific interest	THE MAIDENS	Designated
UK	Area of special scientific interest	FAIR HEAD AND MURLOUGH BAY	Designated
UK	Area of special scientific interest	TYRELLA AND MINERSTOWN	Designated
UK	Area of special scientific interest	BALLYMACORMICK POINT	Designated
UK	Marine conservation zone	SOUTH-WEST DEEPS (WEST)	Designated
UK	Marine conservation zone	WESTERN CHANNEL	Designated
UK	Marine conservation zone	GREATER HAIG FRAS	Designated
UK	Marine conservation zone	NORTH-WEST OF JONES BANK	Designated
UK	Marine conservation zone	WEST OF WALNEY	Designated
UK	Marine conservation zone	ISLES OF SCILLY SITES	Designated
UK	Marine conservation zone	ALLONBY BAY	Designated
UK	Marine conservation zone	BIDEFORD TO FORELAND POINT	Designated
UK	Marine conservation zone	HARTLAND POINT TO TINTAGEL	Designated
UK	Marine conservation zone	MOUNTS BAY	Designated
UK	Marine conservation zone	NEWQUAY AND THE GANNEL	Designated
UK	Marine conservation zone	RUNNEL STONE	Designated
UK	Marine conservation zone	EAST OF HAIG FRAS	Designated
UK	Marine conservation zone	FYLDE	Designated
UK	Marine conservation zone	THE CANYONS	Designated
UK	Marine conservation zone	STRANGFORD LOUGH	Designated
UK	Marine conservation zone	CUMBRIA COAST	Designated
UK	Marine conservation zone	LUNDY	Designated
UK	Marine conservation zone	PADSTOW BAY AND SURROUNDS	Designated
UK	Marine conservation zone	THE MANACLES	Designated
UK	Marine conservation zone	SKOMER	Designated
UK	Marine nature reserve	STRANGFORD LOUGH	Designated

UK	Marine nature reserve	SKOMER	Designated
UK	Marine protected area (OSPAR)	BIDEFORD TO FORELAND POINT	Designated
UK	Marine protected area (OSPAR)	HARTLAND POINT TO TINTAGEL	Designated
UK	Marine protected area (OSPAR)	MOUNTS BAY	Designated
UK	Marine protected area (OSPAR)	NEWQUAY AND THE GANNEL	Designated
UK	Marine protected area (OSPAR)	RUNNEL STONE (LAND'S END)	Designated
UK	Marine protected area (OSPAR)	WEST OF WALNEY	Designated
UK	Marine protected area (OSPAR)	WESTERN CHANNEL	Designated
UK	Marine protected area (OSPAR)	SOUTH WEST DEEPS (WEST)	Designated
UK	Marine protected area (OSPAR)	ALLONBY BAY	Designated
UK	Marine protected area (OSPAR)	CUMBRIA COAST	Designated
UK	Marine protected area (OSPAR)	GEIKIE SLIDE AND HEBRIDEAN SLOPE	Designated
UK	Marine protected area (OSPAR)	ISLES OF SCILLY COMPLEX	Designated
UK	Marine protected area (OSPAR)	KILLOUGH BAY	Designated
UK	Marine protected area (OSPAR)	AILSA CRAIG	Designated
UK	Marine protected area (OSPAR)	MERSEY ESTUARY	Designated
UK	Marine protected area (OSPAR)	SKERRIES AND CAUSEWAY	Designated
UK	Marine protected area (OSPAR)	THE BARRA FAN AND HEBRIDES TERRACE SEAMOUNT	Designated
UK	Marine protected area (OSPAR)	LOCH ROAG LAGOONS	Designated
UK	Marine protected area (OSPAR)	LOCH SWEEN	Designated
UK	Marine protected area (OSPAR)	PISCES REEF COMPLEX	Designated
UK	Marine protected area (OSPAR)	RAMSEY, ISLE OF MAN	Designated
UK	Marine protected area (OSPAR)	STANTON BANKS	Designated
UK	Marine protected area (OSPAR)	CARMARTHEN BAY AND ESTUARIES / BAE CAERFYRDDIN AC ABEROEDD	Designated
UK	Marine protected area (OSPAR)	THE SHIANT ISLES	Designated
UK	Marine protected area (OSPAR)	TRAETH LAFAN / LAVAN SANDS, CONWAY BAY	Designated
UK	Marine protected area (OSPAR)	GREATER HAIG FRAS	Designated
UK	Marine protected area (OSPAR)	NORTH-WEST OF JONES BANK	Designated
UK	Marine protected area (OSPAR)	FYLDE	Designated
UK	Marine protected area (OSPAR)	WESTER ROSS	Designated
UK	Marine protected area (OSPAR)	HAIG FRAS	Designated
UK	Marine protected area (OSPAR)	GLANNAU ABERDARON AND YNYS ENLLI / ABERDARON COAST AND BARDSEY ISLAND	Designated
UK	Marine protected area (OSPAR)	GRASSHOLM	Designated
UK	Marine protected area (OSPAR)	UPPER LOCH FYNE AND LOCH GOIL	Designated
UK	Marine protected area (OSPAR)	SMALL ISLES	Designated
UK	Marine protected area (OSPAR)	MONACH ISLES	Designated
UK	Marine protected area (OSPAR)	ISLES OF SCILLY	Designated
UK	Marine protected area (OSPAR)	BURRY INLET	Designated
UK	Marine protected area (OSPAR)	CARDIGAN BAY / BAE CEREDIGION	Designated
UK	Marine protected area (OSPAR)	EAST OF HAIG FRAS	Designated
UK	Marine protected area (OSPAR)	BELFAST LOUGH	Designated
UK	Marine protected area (OSPAR)	LUNDY	Designated
UK	Marine protected area (OSPAR)	PADSTOW BAY AND SURROUNDS	Designated
UK	Marine protected area (OSPAR)	THE MANACLES	Designated
UK	Marine protected area (OSPAR)	SOUTH ARRAN	Designated
UK	Marine protected area (OSPAR)	SOUND OF BARRA	Designated
UK	Marine protected area (OSPAR)	LOCH CRERAN	Designated
UK	Marine protected area (OSPAR)	LOCHS DUICH, LONG AND AISH	Designated
UK	Marine protected area (OSPAR)	MERSEY NARROWS AND NORTH WIRRAL FORESHORE	Designated
UK	Marine protected area (OSPAR)	THE CANYONS	Designated
UK	Marine protected area (OSPAR)	CLYDE SEA SILL	Designated
UK	Marine protected area (OSPAR)	LOCH SUNART	Designated
UK	Marine protected area (OSPAR)	LOCH SUNART TO THE SOUND OF JURA	Designated
UK	Marine protected area (OSPAR)	FLANNAN ISLES	Designated
UK	Marine protected area (OSPAR)	NORTH RONA AND SULA SGEIR	Designated
UK	Marine protected area (OSPAR)	NORTH UIST MACHAIR AND ISLANDS	Designated
UK	Marine protected area (OSPAR)	ASCRIB, ISAY AND DUNVEGAN	Designated
UK	Marine protected area (OSPAR)	NORTH COLONSAY AND WESTERN CLIFFS	Designated

UK	Marine protected area (OSPAR)	PEMBROKESHIRE MARINE / SIR BENFRO FOROL	Designated
UK	Marine protected area (OSPAR)	DRIGG COAST	Designated
UK	Marine protected area (OSPAR)	SEVERN ESTUARY / MÔR HAFREN	Designated
UK	Marine protected area (OSPAR)	RIBBLE AND ALT ESTUARIES	Designated
UK	Marine protected area (OSPAR)	SEVERN ESTUARY	Designated
UK	Marine protected area (OSPAR)	SOLWAY FIRTH	Designated
UK	Marine protected area (OSPAR)	WEST SHETLAND SHELF	Designated
UK	Marine protected area (OSPAR)	FAL AND HELFORD	Designated
UK	Marine protected area (OSPAR)	MORECAMBE BAY	Designated
UK	Marine protected area (OSPAR)	LIVERPOOL BAY / BAE LERPWL	Designated
UK	Marine protected area (OSPAR)	DEE ESTUARY / ABER DYFRDWY	Designated
UK	Marine protected area (OSPAR)	LUNDY	Designated
UK	Marine protected area (OSPAR)	SOUTH-EAST ISLAY SKERRIES	Designated
UK	Marine protected area (OSPAR)	UPPER SOLWAY FLATS AND MARSHES	Designated
UK	Marine protected area (OSPAR)	LIZARD POINT	Designated
UK	Marine protected area (OSPAR)	RUM	Designated
UK	Marine protected area (OSPAR)	SUNART	Designated
UK	Marine protected area (OSPAR)	SOUTH UIST MACHAIR AND LOCHS	Designated
UK	Marine protected area (OSPAR)	ST KILDA	Designated
UK	Marine protected area (OSPAR)	STRANGFORD LOUGH	Designated
UK	Marine protected area (OSPAR)	RATHLIN ISLAND	Designated
UK	Marine protected area (OSPAR)	BELFAST LOUGH OPEN WATER	Designated
UK	Marine protected area (OSPAR)	LOCHS DUICH, LONG AND ALSH REEFS	Designated
UK	Marine protected area (OSPAR)	INNER CLYDE ESTUARY	Designated
UK	Marine protected area (OSPAR)	LARNE LOUGH	Designated
UK	Marine protected area (OSPAR)	LAND'S END AND CAPE BANK	Designated
UK	Marine protected area (OSPAR)	OUTER ARDS	Designated
UK	Marine protected area (OSPAR)	NORTH RONA	Designated
UK	Marine protected area (OSPAR)	LOCH CRERAN	Designated
UK	Marine protected area (OSPAR)	TRESHNISH ISLES	Designated
UK	Marine protected area (OSPAR)	RED BAY	Designated
UK	Marine protected area (OSPAR)	STRANGFORD LOUGH	Designated
UK	Marine protected area (OSPAR)	CARLINGFORD LOUGH	Designated
UK	Marine protected area (OSPAR)	EILEANAN AGUS SGEIRAN LIOS MÓR	Designated
UK	Marine protected area (OSPAR)	KENFIG / CYNFFIG	Designated
UK	Marine protected area (OSPAR)	PEN LLYN A'R SARNAU / LLEYN PENINSULA AND THE SARNAU	Designated
UK	Marine protected area (OSPAR)	SOLAN BANK REEF	Designated
UK	Marine protected area (OSPAR)	GLANNAU MÔN: CORS HELI / ANGLESEY COAST: SALTMARSH	Designated
UK	Marine protected area (OSPAR)	LIMESTONE COAST OF SOUTH WEST WALES / ARFORDIR CALCHFAEN DE ORLLEWIN CYMRU	Designated
UK	Marine protected area (OSPAR)	SHELL FLAT AND LUNE DEEP	Designated
UK	Marine protected area (OSPAR)	CAPE WRATH	Designated
UK	Marine protected area (OSPAR)	HANDA	Designated
UK	Marine protected area (OSPAR)	MONACH ISLANDS	Designated
UK	Marine protected area (OSPAR)	GRUINART FLATS, ISLAY	Designated
UK	Marine protected area (OSPAR)	MURLOUGH	Designated
UK	Marine protected area (OSPAR)	THE MAIDENS	Designated
UK	Marine protected area (OSPAR)	CROKER CARBONATE SLABS	Designated
UK	Marine protected area (OSPAR)	EAST MINGULAY	Designated
UK	Marine protected area (OSPAR)	ST KILDA	Designated
UK	Marine protected area (OSPAR)	THE DEE ESTUARY	Designated
UK	Marine protected area (OSPAR)	RATHLIN ISLAND	Designated
UK	Marine protected area (OSPAR)	CANNA AND SANDAY	Designated
UK	Marine protected area (OSPAR)	LOCH LAXFORD	Designated
UK	Marine protected area (OSPAR)	LOCH MOIDART AND LOCH SHIEL WOODS	Designated
UK	Marine protected area (OSPAR)	LOCH NAM MADADH	Designated
UK	Marine protected area (OSPAR)	LUCE BAY AND SANDS	Designated
UK	Marine protected area (OSPAR)	MÒINE MHÓR	Designated
UK	Marine protected area (OSPAR)	LOUGH FOYLE	Designated

UK	Marine protected area (OSPAR)	SOUND OF ARISAIG (LOCH AILORT TO LOCH CEANN TRAIGH)	Designated
UK	Marine protected area (OSPAR)	Y FENAI A BAE CONWY / MENAI STRAIT AND CONWY BAY	Designated
UK	Marine protected area (OSPAR)	BAE CAERFYRDDIN / CARMARTHEN BAY	Designated
UK	Marine protected area (OSPAR)	FIRTH OF LORN	Designated
UK	Marine protected area (OSPAR)	MINGULAY AND BERNERAY	Designated
UK	Nature conservation MPA	LOCH CRERAN	Designated
UK	Nature conservation MPA	LOCH SUNART	Designated
UK	Nature conservation MPA	LOCH SWEEN	Designated
UK	Nature conservation MPA	MONACH ISLES	Designated
UK	Nature conservation MPA	SMALL ISLES	Designated
UK	Nature conservation MPA	SOUTH ARRAN	Designated
UK	Nature conservation MPA	UPPER LOCH FYNE AND LOCH GOIL	Designated
UK	Nature conservation MPA	WESTER ROSS	Designated
UK	Nature conservation MPA	WEST SHETLAND SHELF	Designated
UK	Nature conservation MPA	GEIKIE SLIDE AND HEBRIDEAN SLOPE	Designated
UK	Nature conservation MPA	LOCHS DUICH, LONG AND ALSH	Designated
UK	Nature conservation MPA	LOCH SUNART TO THE SOUND OF JURA	Designated
UK	Nature conservation MPA	CLYDE SEA SILL	Designated
UK	Nature conservation MPA	THE BARRA FAN AND HEBRIDES TERRACE SEAMOUNT	Designated
UK	Site of community importance	CAPE WRATH	Designated
UK	Site of community importance	CROKER CARBONATE SLABS	Designated
UK	Site of community importance	PISCES REEF COMPLEX	Designated
UK	Site of community importance	SKERRIES AND CAUSEWAY	Designated
UK	Site of community importance	SOLAN BANK REEF	Designated
UK	Site of community importance	THE MAIDENS	Designated
UK	Site of community importance	SHELL FLAT AND LUNE DEEP	Designated
UK	Site of community importance	STANTON BANKS	Designated
UK	Site of community importance	RED BAY	Designated
UK	Site of community importance	EAST MINGULAY	Designated
UK	Site of community importance	LAND'S END AND CAPE BANK	Designated
UK	Site of community importance	LIZARD POINT	Designated
UK	Site of community importance	HAIG FRAS	Designated
UK	Site of special scientific interest	SAINT MARTIN'S SEDIMENTARY SHORE	Designated
UK	Site of special scientific interest	LOWER FAL AND HELFORD INTERTIDAL	Designated
UK	Site of special scientific interest	SEFTON COAST	Designated
UK	Site of special scientific interest	WYRE ESTUARY	Designated
UK	Site of special scientific interest	SEVERN ESTUARY	Designated
UK	Site of special scientific interest	UPPER SOLWAY FLATS AND MARSHES	Designated
UK	Site of special scientific interest	MALPAS ESTUARY	Designated
UK	Site of special scientific interest	TRESHNISH ISLES	Designated
UK	Site of special scientific interest	CREE ESTUARY	Designated
UK	Site of special scientific interest	UPPER SOLWAY FLATS AND MARSHES	Designated
UK	Site of special scientific interest	BALLOCHMARTIN BAY	Designated
UK	Site of special scientific interest	BOGSIDE FLATS	Designated
UK	Site of special scientific interest	GRUINART FLATS	Designated
UK	Site of special scientific interest	LOCH AN DUIN	Designated
UK	Site of special scientific interest	TONG SALTINGS	Designated
UK	Site of special scientific interest	KENTRA BAY AND MOSS	Designated
UK	Site of special scientific interest	SMALL SEAL ISLANDS	Designated
UK	Site of special scientific interest	NORTH RONA AND SULA SGEIR	Designated
UK	Site of special scientific interest	HOWMORE ESTUARY LOCHS ROAG AND FADA	Designated
UK	Site of special scientific interest	LUSKENTYRE BANKS AND SALTINGS	Designated
UK	Site of special scientific interest	LOCH MOIDART	Designated
UK	Site of special scientific interest	INNER CLYDE	Designated
UK	Site of special scientific interest	LOCH NAM MADADH	Designated
UK	Site of special scientific interest	OBAIN LOCH EUPHOIRT	Designated
UK	Site of special scientific interest	SLEIBHTEAN AGUS CLADACH THIRIODH	Designated
UK	Site of special scientific interest	SUNART	Designated
UK	Site of special scientific interest	ORONSAY AND SOUTH COLONSAY	Designated

UK	Site of special scientific interest	ULVA DANNA AND THE MCCORMAIG ISLES	Designated
UK	Site of special scientific interest	BALRANALD BOG AND LOCH NAM FEITHEAN	Designated
UK	Site of special scientific interest	BRIDGEND FLATS	Designated
UK	Site of special scientific interest	LOCHS AT CLACHAN	Designated
UK	Site of special scientific interest	DEE ESTUARY	Designated
UK	Site of special scientific interest	HAYLE ESTUARY AND CARRACK GLADDEN	Designated
UK	Site of special scientific interest	PORLOCK RIDGE AND SALTMARSH	Designated
UK	Site of special scientific interest	ROSEMULLION	Designated
UK	Site of special scientific interest	UPPER SEVERN ESTUARY	Designated
UK	Site of special scientific interest	LOCH SIADAR	Designated
UK	Site of special scientific interest	MERSEY NARROWS	Designated
UK	Site of special scientific interest	NORTHTON BAY	Designated
UK	Site of special scientific interest	TYWYN ABERFFRAW	Designated
UK	Site of special scientific interest	TAYNISH WOODS	Designated
UK	Site of special scientific interest	THE SKERRIES	Designated
UK	Site of special scientific interest	TOB VALASAY	Designated
UK	Site of special scientific interest	TY CROES	Designated
UK	Site of special scientific interest	DRIGG COAST	Designated
UK	Site of special scientific interest	DUDDON ESTUARY	Designated
UK	Site of special scientific interest	BRIDGWATER BAY	Designated
UK	Site of special scientific interest	MERSEY ESTUARY	Designated
UK	Site of special scientific interest	LUNE ESTUARY	Designated
UK	Site of special scientific interest	MORECAMBE BAY	Designated
UK	Site of special scientific interest	SOUTH WALNEY AND PIEL CHANNEL FLATS	Designated
UK	Site of special scientific interest	TAW-TORRIDGE ESTUARY	Designated
UK	Site of special scientific interest	NORTH WIRRAL FORESHORE	Designated
UK	Site of special scientific interest	BERROW DUNES	Designated
UK	Site of special scientific interest	RIBBLE ESTUARY	Designated
UK	Site of special scientific interest	UPPER FAL ESTUARY AND WOODS	Designated
UK	Site of special scientific interest	CREIGIAU PEN Y GRAIG	Designated
UK	Site of special scientific interest	SKOKHOLM	Designated
UK	Site of special scientific interest	AFON TEIFI	Designated
UK	Site of special scientific interest	ARFORDIR PEN-BRE / PEMBREY COAST	Designated
UK	Site of special scientific interest	MONKNASH COAST	Designated
UK	Site of special scientific interest	ABERARTH-CARREG WYLAN	Designated
UK	Site of special scientific interest	BLACKPILL, SWANSEA	Designated
UK	Site of special scientific interest	CRAIGYFULFRAN & CLARACH	Designated
UK	Site of special scientific interest	CRYMLYN BURROWS	Designated
UK	Site of special scientific interest	GWYDIR BAY	Designated
UK	Site of special scientific interest	HORTON, EASTERN AND WESTERN SLADE	Designated
UK	Site of special scientific interest	RAMSEY / YNYS DDEWI	Designated
UK	Site of special scientific interest	ARFORDIR PENRHYN ANGLE / ANGLE PENINSULA COAST	Designated
UK	Site of special scientific interest	GLANNAU ABERDARON	Designated
UK	Site of special scientific interest	GLANNAU YNYS GYBI : HOLY ISLAND COAST	Designated
UK	Site of special scientific interest	GLASLYN	Designated
UK	Site of special scientific interest	MYNYDD TIR Y CWMWD A'R GLANNAU AT GARREG YR IMBILL	Designated
UK	Site of special scientific interest	FLAT HOLM	Designated
UK	Site of special scientific interest	GRONANT DUNES AND TALACRE WARREN	Designated
UK	Site of special scientific interest	BROADWATER	Designated
UK	Site of special scientific interest	MYNYDD PENARFYNNYDD	Designated
UK	Site of special scientific interest	TENBY CLIFFS AND ST.CATHERINE'S ISLAND	Designated
UK	Site of special scientific interest	SOUTHERNDOWN COAST	Designated
UK	Site of special scientific interest	BORTH-CLARACH	Designated
UK	Site of special scientific interest	ABER MAWDDACH / MAWDDACH ESTUARY	Designated
UK	Site of special scientific interest	STRUMBLE HEAD - LLECHDAFAD CLIFFS	Designated
UK	Site of special scientific interest	PUFFIN ISLAND - YNYS SEIRIOL	Designated
UK	Site of special scientific interest	STACKPOLE QUAY - TREWENT POINT	Designated
UK	Site of special scientific interest	PEN Y GOGARTH/GREAT ORME'S HEAD	Designated
UK	Site of special scientific interest	TWYNI LACHARN-PENTYWYN / LAUGHARNE AND PENDINE BURROWS	Designated

UK	Site of special scientific interest	PENARTH COAST	Designated
UK	Site of special scientific interest	SEVERN ESTUARY (WALES)	Designated
UK	Site of special scientific interest	SKOMER ISLAND & MIDDLEHOLM	Designated
UK	Site of special scientific interest	AFON TYWI	Designated
UK	Site of special scientific interest	FRESHWATER EAST CLIFFS TO SKRINKLE HAVEN	Designated
UK	Site of special scientific interest	GLANLLYNNAU A GLANNAU PEN-YCHAIN I GRICIETH	Designated
UK	Site of special scientific interest	MORFA HARLECH	Designated
UK	Site of special scientific interest	GLANNAU PENMON-BIWMARES	Designated
UK	Site of special scientific interest	GLANNAU TONFANAU I FRIOG	Designated
UK	Site of special scientific interest	ALLT WEN A TRAETH TANYBWLCH	Designated
UK	Site of special scientific interest	TRAETH LLANON	Designated
UK	Site of special scientific interest	YNYSOEDD Y GWYLANOD: GWYLAN ISLANDS	Designated
UK	Site of special scientific interest	TRAETH LAFAN	Designated
UK	Site of special scientific interest	TRAETH LLIGWY	Designated
UK	Site of special scientific interest	NEWPORT CLIFFS	Designated
UK	Site of special scientific interest	PORTH CEIRIAD, PORTH NEIGWL AC YNYSOEDD SANT TUDWAL	Designated
UK	Site of special scientific interest	MERTHYR MAWR	Designated
UK	Site of special scientific interest	GOWER COAST : RHOSSILI TO PORTEYNON	Designated
UK	Site of special scientific interest	ARFORDIR NIWGWL - ABER BACH / NEWGALE - LITTLE HAVEN COAST	Designated
UK	Site of special scientific interest	Y FORYD	Designated
UK	Site of special scientific interest	CREIGIAU CWM-CERIW A FFOS-LAS (MORFA BYCHAN)	Designated
UK	Site of special scientific interest	MILFORD HAVEN WATERWAY	Designated
UK	Site of special scientific interest	ST. MARGARET'S ISLAND	Designated
UK	Site of special scientific interest	PORTH TOWYN I BORTH WEN	Designated
UK	Site of special scientific interest	YNYS FEURIG	Designated
UK	Site of special scientific interest	ARFORDIR MARROS-PENTYWYN / MARROS PENDINE COAST	Designated
UK	Site of special scientific interest	ARFORDIR SAUNDERSFOOT - TELPYN / SAUNDERSFOOT - TELPYN COAST	Designated
UK	Site of special scientific interest	CEMLYN BAY	Designated
UK	Site of special scientific interest	GRASSHOLM / YNYS GWALES	Designated
UK	Site of special scientific interest	ARFORDIR ABEREIDDI	Designated
UK	Site of special scientific interest	CREIGIAU RHIWLEDYN/LITTLE ORME'S HEAD	Designated
UK	Site of special scientific interest	GLANNAU RHOSCOLYN	Designated
UK	Site of special scientific interest	WATERWYNCH BAY TO SAUNDERSFOOT HARBOUR	Designated
UK	Site of special scientific interest	CREIGIAU ABERARTH-MORFA	Designated
UK	Site of special scientific interest	OXWICH BAY	Designated
UK	Site of special scientific interest	RHOSNEIGR REEFS	Designated
UK	Site of special scientific interest	SULLY ISLAND	Designated
UK	Site of special scientific interest	EAST ABERTHAW COAST	Designated
UK	Site of special scientific interest	DYFI	Designated
UK	Site of special scientific interest	TWYNI CHWITFFORDD, MORFA LANDIMOR A BAE BRYCHDWN / WHITEFORD BURROWS, LANDIMORE	Designated
UK	Site of special scientific interest	BURRY INLET AND LOUGHOR ESTUARY	Designated
UK	Site of special scientific interest	ARFORDIR GOGLEDDOL PENMON	Designated
UK	Site of special scientific interest	ST.DAVID'S PENINSULA COAST	Designated
UK	Site of special scientific interest	DE PORTH SAIN FFRAID / ST BRIDE'S BAY SOUTH	Designated
UK	Site of special scientific interest	THE OFFSHORE INLETS OF PEMBROKESHIRE / YNYSOEDD GLANNAU PENFRO	Designated
UK	Site of special scientific interest	YNYS ENLLI: BARDSEY ISLAND	Designated
UK	Site of special scientific interest	DEE ESTUARY / ABER AFON DYFRDWY	Designated
UK	Site of special scientific interest	DALE AND SOUTH MARLOES COAST	Designated
UK	Site of special scientific interest	BEDDMANARCH-CYMYRAN	Designated
UK	Site of special scientific interest	NEWBOROUGH WARREN - YNYS LLANDDWYN	Designated
UK	Site of special scientific interest	TIROEDD A GLANNAU RHWNG CRICIETH AC AFON GLASLYN	Designated
UK	Site of special scientific interest	PENRHYNOEDD LLANGADWALADR	Designated
UK	Site of special scientific interest	PORTH DINLLAEN I BORTH PISTYLL	Designated
UK	Site of special scientific interest	PWLL DU HEAD AND BISHOPSTON VALLEY	Designated
UK	Site of special scientific interest	GLANNAU PORTHAETHWY	Designated
UK	Site of special scientific interest	LYDSTEP HEAD TO TENBY BURROWS	Designated
UK	Site of special scientific interest	WIG BACH A'R GLANNAU I BORTH ALWM	Designated

UK	Site of special scientific interest	CYNFFIG / KENFIG	Designated
UK	Site of special scientific interest	STACKPOLE	Designated
UK	Site of special scientific interest	ABER TAF / TAF ESTUARY	Designated
UK	Site of special scientific interest	ABER AFON CONWY / CONWY ESTUARY	Designated
UK	Site of special scientific interest	MORFA DYFFRYN	Designated
UK	Site of special scientific interest	CASTLEMARTIN CLIFFS AND DUNES	Designated
UK	Special area of conservation	CEMLYN BAY / BAE CEMLYN	Designated
UK	Special area of conservation	KENFIG / CYNFFIG	Designated
UK	Special area of conservation	BRAUNTON BURROWS	Designated
UK	Special area of conservation	CARDIGAN BAY / BAE CEREDIGION	Designated
UK	Special area of conservation	SOUTH UIST MACHAIR	Designated
UK	Special area of conservation	SOLWAY FIRTH	Designated
UK	Special area of conservation	MORECAMBE BAY	Designated
UK	Special area of conservation	SEVERN ESTUARY / MÔR HAFREN	Designated
UK	Special area of conservation	DRIGG COAST	Designated
UK	Special area of conservation	LUCE BAY AND SANDS	Designated
UK	Special area of conservation	FAL AND HELFORD	Designated
UK	Special area of conservation	LUNDY	Designated
UK	Special area of conservation	PEMBROKESHIRE MARINE / SIR BENFRO FOROL	Designated
UK	Special area of conservation	LLEYN PENINSULA AND THE SARNAU / PEN LLYN A'R SARNAU	Designated
UK	Special area of conservation	ISLES OF SCILLY COMPLEX	Designated
UK	Special area of conservation	LIMESTONE COAST OF SOUTH WEST WALES / ARFORDIR CALCHFAEN DE ORLLEWIN CYMRU	Designated
UK	Special area of conservation	MURLOUGH	Designated
UK	Special area of conservation	STRANGFORD LOUGH	Designated
UK	Special area of conservation	LOCH NAM MADADH	Designated
UK	Special area of conservation	LOCH ROAG LAGOONS	Designated
UK	Special area of conservation	LOCHS DUICH, LONG AND ALSH REEFS	Designated
UK	Special area of conservation	OBAIN LOCH EUPHOIRT	Designated
UK	Special area of conservation	SOUND OF ARISAIG (LOCH AILORT TO LOCH CEANN TRAIGH)	Designated
UK	Special area of conservation	SUNART	Designated
UK	Special area of conservation	NORTH UIST MACHAIR	Designated
UK	Special area of conservation	MÒINE MHÓR	Designated
UK	Special area of conservation	CARMARTHEN BAY AND ESTUARIES / BAE CAERFYRDDIN AC ABEROEDD	Designated
UK	Special area of conservation	ANGLESEY COAST: SALTMARSH / GLANNAU MÔN: CORS HELI	Designated
UK	Special area of conservation	FIRTH OF LORN	Designated
UK	Special area of conservation	RATHLIN ISLAND	Designated
UK	Special area of conservation	SOUTH-EAST ISLAY SKERRIES	Designated
UK	Special area of conservation	BANN ESTUARY	Designated
UK	Special area of conservation	DEE ESTUARY / ABER DYFRDWY	Designated
UK	Special area of conservation	EILEANAN AGUS SGEIRAN LIOS MÓR	Designated
UK	Special area of conservation	LOCH CRERAN	Designated
UK	Special area of conservation	LOCH LAXFORD	Designated
UK	Special area of conservation	MENAI STRAIT AND CONWY BAY / Y FENAI A BAE CONWY	Designated
UK	Special area of conservation	LOCH MOIDART AND LOCH SHIEL WOODS	Designated
UK	Special area of conservation	NORTH ANTRIM COAST	Designated
UK	Special area of conservation	ASCRIB, ISAY AND DUNVEGAN	Designated
UK	Special area of conservation	MONACH ISLANDS	Designated
UK	Special area of conservation	NORTH RONA	Designated
UK	Special area of conservation	ST KILDA	Designated
UK	Special area of conservation	TRESHNISH ISLES	Designated
UK	Special protection area	MINGULAY AND BERNERAY	Designated
UK	Special protection area	KILLOUGH BAY	Designated
UK	Special protection area	AILSA CRAIG	Designated
UK	Special protection area	BRIDGEND FLATS, ISLAY	Designated
UK	Special protection area	ST KILDA	Designated
UK	Special protection area	NORTH UIST MACHAIR AND ISLANDS	Designated
UK	Special protection area	SOUTH UIST MACHAIR AND LOCHS	Designated
UK	Special protection area	HANDA	Designated

UK	Special protection area	CANNA AND SANDAY	Designated
UK	Special protection area	TRESHNISH ISLES	Designated
UK	Special protection area	GRUINART FLATS, ISLAY	Designated
UK	Special protection area	LAGGAN, ISLAY	Designated
UK	Special protection area	INNER CLYDE ESTUARY	Designated
UK	Special protection area	LOCH OF INCH AND TORRS WARREN	Designated
UK	Special protection area	NORTH COLONSAY AND WESTERN CLIFFS	Designated
UK	Special protection area	UPPER SOLWAY FLATS AND MARSHES	Designated
UK	Special protection area	DUDDON ESTUARY	Designated
UK	Special protection area	MORECAMBE BAY	Designated
UK	Special protection area	RIBBLE AND ALT ESTUARIES	Designated
UK	Special protection area	MERSEY ESTUARY	Designated
UK	Special protection area	THE DEE ESTUARY	Designated
UK	Special protection area	LAVAN SANDS / TRAETH LAFAN, CONWAY BAY	Designated
UK	Special protection area	CARMARTHEN BAY / BAE CAERFYRDDIN	Designated
UK	Special protection area	BURRY INLET	Designated
UK	Special protection area	SEVERN ESTUARY	Designated
UK	Special protection area	RATHLIN ISLAND	Designated
UK	Special protection area	LOUGH FOYLE	Designated
UK	Special protection area	LARNE LOUGH	Designated
UK	Special protection area	BELFAST LOUGH	Designated
UK	Special protection area	STRANGFORD LOUGH	Designated
UK	Special protection area	CARLINGFORD LOUGH	Designated
UK	Special protection area	OUTER ARDS	Designated
UK	Special protection area	BELFAST LOUGH OPEN WATER	Designated
UK	Special protection area	LIVERPOOL BAY / BAE LERPWL	Designated
UK	Special protection area	ORONSAY AND SOUTH COLONSAY	Designated
UK	Special protection area	NORTH RONA AND SULA SGEIR	Designated
UK	Special protection area	FLANNAN ISLES	Designated
UK	Special protection area	THE SHIANT ISLES	Designated
UK	Special protection area	RUM	Designated
UK	Special protection area	CAPE WRATH	Designated
UK	Special protection area	GLANNAU ABERDARON AC YNYS ENLLI / ABERDARON COAST AND BARDSEY ISLAND	Designated
UK	Special protection area	GRASSHOLM	Designated
UK	Special protection area	SKOMER, SKOKHOLM AND THE SEAS OFF PEMBROKESHIRE / SGOMER, SGOGWM A MOROEDD PENFR	Designated
UK	Ramsar	THE DEE ESTUARY	Designated
UK	Ramsar	UPPER SOLWAY FLATS AND MARSHES	Designated
UK	Ramsar	GRUINART FLATS, ISLAY	Designated
UK	Ramsar	LOCH AN DUIN	Designated
UK	Ramsar	RIBBLE AND ALT ESTUARIES	Designated
UK	Ramsar	SEVERN ESTUARY	Designated
UK	Ramsar	MORECAMBE BAY	Designated
UK	Ramsar	MERSEY ESTUARY	Designated
UK	Ramsar	DUDDON ESTUARY	Designated
UK	Ramsar	NORTH UIST MACHAIR AND ISLANDS	Designated
UK	Ramsar	INNER CLYDE ESTUARY	Designated
UK	Ramsar	ISLES OF SCILLY	Designated
UK	Ramsar	SLÉIBHTEAN AGUS CLADACH THIRIODH (TIREE WETLANDS AND COAST)	Designated
UK	Ramsar	MERSEY NARROWS AND NORTH WIRRAL FORESHORE	Designated
UK	Ramsar	BRIDGEND FLATS, ISLAY	Designated
UK	Ramsar	CARLINGFORD LOUGH	Designated
UK	Ramsar	BELFAST LOUGH	Designated
UK	Ramsar	LARNE LOUGH	Designated
UK	Ramsar	LOUGH FOYLE	Designated
UK	Ramsar	STRANGFORD LOUGH	Designated
UK	Ramsar	CORS FOCHNO AND DYFI	Designated
UK	Ramsar	BURRY INLET	Designated

UK	Site of community importance	Inner Hebrides and the Minches	Project
UK	Site of community importance	West Wales Marine / Gorllewin Cymru Forol	Project
UK	Site of community importance	North Channel	Project
UK	Site of community importance	North Anglesey Marine / Gogledd Môn Forol	Project
UK	Site of community importance	Bristol Channel Approaches / Dynesfeydd Môr Hafren	Project
UK	Special protection area	Morecambe Bay and Duddon Estuary	Project
UK	Special protection area	Skomer, Skokholm and the Seas off Pembrokeshire / Sgomer, Sgogwm a Moroedd Penfro	Project
UK	Special protection area	Northern Cardigan Bay / Gogledd Bae Ceredigion	Project
UK	Special protection area	Anglesey Terns / Morwenoliaid Ynys Môn	Project
UK	Special protection area	Mersey Narrows and North Wirral Foreshore	Project
UK	Marine conservation zone	Camel Estuary	Recommended
UK	Marine conservation zone	Cape Bank	Recommended
UK	Marine conservation zone	Celtic Deep	Recommended
UK	Marine conservation zone	East of Celtic Deep	Recommended
UK	Marine conservation zone	East of Jones Bank	Recommended
UK	Marine conservation zone	Mid St George's Channel	Recommended
UK	Marine conservation zone	Morte Platform	Recommended
UK	Marine conservation zone	Mud Hole	Recommended
UK	Marine conservation zone	North-East of Haig Fras	Recommended
UK	Marine conservation zone	North of Celtic Deep	Recommended
UK	Marine conservation zone	North of Lundy	Recommended
UK	Marine conservation zone	North St George's Channel	Recommended
UK	Marine conservation zone	North St George's Channel Extension	Recommended
UK	Marine conservation zone	Ribble	Recommended
UK	Marine conservation zone	Sefton Coast	Recommended
UK	Marine conservation zone	Slieve Na Griddle	Recommended
UK	Marine conservation zone	Solway Firth	Recommended
UK	Marine conservation zone	South-West Deeps (East)	Recommended
UK	Marine conservation zone	South of Celtic Deep	Recommended
UK	Marine conservation zone	South of Falmouth	Recommended
UK	Marine conservation zone	South of the Isles of Scilly	Recommended
UK	Marine conservation zone	South Rigg	Recommended
UK	Marine conservation zone	Taw Torridge Estuary	Recommended
UK	Marine conservation zone	Wyre-Lune	Recommended

Annex 2: Reference list for species in the NEA database

Règne	Classe	Nom scientifique	Classement IUCN	N2000 oiseau	OSPAR
Animalia	Actinopterygii	<i>Acipenser sturio</i>	CR	1	1
Animalia	Actinopterygii	<i>Alburnoides bipunctatus</i>	NE	0	0
Animalia	Actinopterygii	<i>Alosa alosa</i>	LC	1	1
Animalia	Actinopterygii	<i>Alosa fallax</i>	LC	1	0
Animalia	Actinopterygii	<i>Anguilla anguilla</i>	CR	0	1
Animalia	Actinopterygii	<i>Coregonus lavaretus oxyrinchus</i>	VU	1	1
Animalia	Actinopterygii	<i>Cottus gobio</i>	NE	1	0
Animalia	Actinopterygii	<i>Esox lucius</i>	NE	0	0
Animalia	Actinopterygii	<i>Gadus morhua</i>	VU	0	1
Animalia	Actinopterygii	<i>Hippocampus guttulatus</i>	DD	0	1
Animalia	Actinopterygii	<i>Hippocampus hippocampus</i>	DD	0	1
Animalia	Actinopterygii	<i>Hoplostethus atlanticus</i>	NE	0	1
Animalia	Actinopterygii	<i>Leucaspius delineatus</i>	NE	0	0
Animalia	Actinopterygii	<i>Leuciscus idus</i>	NE	0	0
Animalia	Actinopterygii	<i>Leuciscus leuciscus</i>	NE	0	0
Animalia	Actinopterygii	<i>Pomatoschistus microps</i>	LC	0	0
Animalia	Actinopterygii	<i>Pomatoschistus minutus</i>	NE	0	0
Animalia	Actinopterygii	<i>Salmo salar</i>	LC	1	1
Animalia	Actinopterygii	<i>Salmo trutta</i>	LC	1	0
Animalia	Actinopterygii	<i>Salmo trutta fario</i>	NE	1	0
Animalia	Actinopterygii	<i>Salmo trutta trutta</i>	NE	0	0
Animalia	Actinopterygii	<i>Silurus glanis</i>	NE	0	0

Animalia	Actinopterygii	<i>Syngnathus abaster</i>	LC	0	0
Animalia	Actinopterygii	<i>Thunnus thynnus</i>	EN	0	1
Animalia	Actinopterygii	<i>Thymallus thymallus</i>	NE	0	0
Animalia	Anthozoa	<i>Dendrophyllia cornigera</i>	NE	0	0
Animalia	Anthozoa	<i>Lophelia pertusa</i>	NE	0	0
Animalia	Anthozoa	<i>Madrepora oculata</i>	NE	0	0
Animalia	Aves	<i>Alca torda</i>	LC	1	0
Animalia	Aves	<i>Alle alle</i>	LC	0	0
Animalia	Aves	<i>Calonectris diomedea</i>	LC	1	0
Animalia	Aves	<i>Catharacta skua</i>	LC	0	0
Animalia	Aves	<i>Cephus grylle</i>	LC	0	0
Animalia	Aves	<i>Clangula hyemalis</i>	LC	1	0
Animalia	Aves	<i>Fratercula arctica</i>	LC	1	0
Animalia	Aves	<i>Fulmarus glacialis</i>	LC	1	0
Animalia	Aves	<i>Gavia arctica</i>	LC	1	0
Animalia	Aves	<i>Gavia immer</i>	LC	1	0
Animalia	Aves	<i>Gavia stellata</i>	LC	1	0
Animalia	Aves	<i>Haematopus ostralegus</i>	LC	1	0
Animalia	Aves	<i>Hydrobates pelagicus</i>	LC	1	0
Animalia	Aves	<i>Larus argentatus</i>	LC	1	0
Animalia	Aves	<i>Larus audouinii</i>	NT	1	0
Animalia	Aves	<i>Larus cachinnans</i>	LC	1	0
Animalia	Aves	<i>Larus canus</i>	LC	1	0
Animalia	Aves	<i>Larus delawarensis</i>	LC	0	0
Animalia	Aves	<i>Larus fuscus</i>	LC	1	1
Animalia	Aves	<i>Larus glaucooides</i>	LC	0	0
Animalia	Aves	<i>Larus hyperboreus</i>	LC	0	0
Animalia	Aves	<i>Larus marinus</i>	LC	1	0
Animalia	Aves	<i>Larus melanocephalus</i>	LC	1	0
Animalia	Aves	<i>Larus michahellis</i>	NE	1	0
Animalia	Aves	<i>Larus minutus</i>	LC	1	0
Animalia	Aves	<i>Larus ridibundus</i>	NE	1	0
Animalia	Aves	<i>Larus sabini</i>	LC	1	0
Animalia	Aves	<i>Melanitta fusca</i>	LC	1	0
Animalia	Aves	<i>Melanitta nigra</i>	LC	1	0
Animalia	Aves	<i>Melanitta perspicillata</i>	LC	0	0
Animalia	Aves	<i>Morus bassanus</i>	LC	1	0
Animalia	Aves	<i>Oceanodroma leucorhoa</i>	LC	1	0
Animalia	Aves	<i>Pagophila eburnea</i>	NT	0	1
Animalia	Aves	<i>Phalacrocorax aristotelis</i>	LC	1	0
Animalia	Aves	<i>Phalacrocorax carbo</i>	LC	1	0
Animalia	Aves	<i>Pinguinus impennis</i>	EX	0	0
Animalia	Aves	<i>Podiceps auritus</i>	LC	1	0
Animalia	Aves	<i>Podiceps cristatus</i>	LC	1	0
Animalia	Aves	<i>Podiceps grisegena</i>	LC	1	0
Animalia	Aves	<i>Podiceps nigricollis</i>	LC	1	0
Animalia	Aves	<i>Polysticta stelleri</i>	VU	1	1
Animalia	Aves	<i>Puffinus assimilis baroli</i>	LC	1	1
Animalia	Aves	<i>Puffinus gravis</i>	LC	1	0
Animalia	Aves	<i>Puffinus griseus</i>	NT	1	0
Animalia	Aves	<i>Puffinus mauretanicus</i>	CR	1	1
Animalia	Aves	<i>Puffinus puffinus</i>	LC	1	0
Animalia	Aves	<i>Recurvirostra avosetta</i>	LC	1	0
Animalia	Aves	<i>Rissa tridactyla</i>	LC	1	1
Animalia	Aves	<i>Somateria mollissima</i>	LC	1	0
Animalia	Aves	<i>Stercorarius longicaudus</i>	LC	1	0
Animalia	Aves	<i>Stercorarius parasiticus</i>	LC	1	0
Animalia	Aves	<i>Stercorarius pomarinus</i>	LC	1	0
Animalia	Aves	<i>Sterna albifrons</i>	LC	1	0
Animalia	Aves	<i>Sterna bengalensis</i>	LC	0	0
Animalia	Aves	<i>Sterna caspia</i>	LC	1	0
Animalia	Aves	<i>Sterna dougallii</i>	LC	1	1
Animalia	Aves	<i>Sterna hirundo</i>	LC	1	0
Animalia	Aves	<i>Sterna paradisaea</i>	LC	1	0
Animalia	Aves	<i>Sterna sandvicensis</i>	LC	1	0
Animalia	Aves	<i>Tachybaptus ruficollis</i>	LC	1	0
Animalia	Aves	<i>Uria aalge</i>	LC	1	1
Animalia	Aves	<i>Uria lomvia</i>	LC	0	1
Animalia	Bivalvia	<i>Arctica islandica</i>	NE	0	1
Animalia	Bivalvia	<i>Ostrea edulis</i>	NE	0	1
Animalia	Bivalvia	<i>Pholas dactylus</i>	NE	0	0
Animalia	Bivalvia	<i>Pinna rudis</i>	NE	0	0

Animalia	Cephalaspidomorphi	<i>Lampetra fluviatilis</i>	LC	1	0	
Animalia	Cephalaspidomorphi	<i>Petromyzon marinus</i>	LC	1	1	
Animalia	Echinoidea	<i>Paracentrotus lividus</i>	NE	0	0	
Animalia	Elasmobranchii	<i>Carcharodon carcharias</i>	VU	0	0	
Animalia	Elasmobranchii	<i>Centrophorus granulosus</i>	VU	0	1	
Animalia	Elasmobranchii	<i>Centrophorus squamosus</i>	VU	0	1	
Animalia	Elasmobranchii	<i>Centroscymnus coelolepis</i>	NT	0	1	
Animalia	Elasmobranchii	<i>Cetorhinus maximus</i>	VU	0	1	
Animalia	Elasmobranchii	<i>Dipturus batis</i>	CR	0	1	
Animalia	Elasmobranchii	<i>Lamna nasus</i>	VU	0	1	
Animalia	Elasmobranchii	<i>Raja clavata</i>	NT	0	1	
Animalia	Elasmobranchii	<i>Raja montagui</i>	LC	0	1	
Animalia	Elasmobranchii	<i>Rostroraja alba</i>	EN	0	1	
Animalia	Elasmobranchii	<i>Squalus acanthias</i>	VU	0	1	
Animalia	Elasmobranchii	<i>Squatina squatina</i>	CR	0	1	
Animalia	Gastropoda	<i>Nucella lapillus</i>	NE	0	1	
Animalia	Gastropoda	<i>Patella ulyssiponensis aspera</i>		0	0	1
Animalia	Malacostraca	<i>Maja squinado</i>	NE	0	0	
Animalia	Mammalia	<i>Balaena mysticetus</i>	LC	0	1	
Animalia	Mammalia	<i>Balaenoptera acutorostrata</i>	LC	0	0	
Animalia	Mammalia	<i>Balaenoptera borealis</i>	EN	0	0	
Animalia	Mammalia	<i>Balaenoptera musculus</i>	EN	0	1	
Animalia	Mammalia	<i>Balaenoptera physalus</i>	EN	0	0	
Animalia	Mammalia	<i>Delphinapterus leucas</i>	NT	0	0	
Animalia	Mammalia	<i>Delphinus delphis</i>	LC	0	0	
Animalia	Mammalia	<i>Eubalaena glacialis</i>	EN	1	1	
Animalia	Mammalia	<i>Globicephala macrorhynchus</i>	DD	0	0	
Animalia	Mammalia	<i>Globicephala melas</i>	DD	0	0	
Animalia	Mammalia	<i>Grampus griseus</i>	LC	0	0	
Animalia	Mammalia	<i>Halichoerus grypus</i>	LC	1	0	
Animalia	Mammalia	<i>Hyperoodon ampullatus</i>	DD	0	0	
Animalia	Mammalia	<i>Kogia breviceps</i>	DD	0	0	
Animalia	Mammalia	<i>Kogia sima</i>	DD	0	0	
Animalia	Mammalia	<i>Lagenorhynchus acutus</i>	LC	0	0	
Animalia	Mammalia	<i>Lutra lutra</i>	NT	1	0	
Animalia	Mammalia	<i>Megaptera novaeangliae</i>	LC	0	0	
Animalia	Mammalia	<i>Mesoplodon bidens</i>	DD	0	0	
Animalia	Mammalia	<i>Monachus monachus</i>	CR	0	0	
Animalia	Mammalia	<i>Orcinus orca</i>	DD	0	0	
Animalia	Mammalia	<i>Pagophilus groenlandicus</i>	LC	0	0	
Animalia	Mammalia	<i>Phoca vitulina</i>	LC	1	0	
Animalia	Mammalia	<i>Phocoena phocoena</i>	LC	1	1	
Animalia	Mammalia	<i>Physeter macrocephalus</i>	VU	0	0	
Animalia	Mammalia	<i>Stenella coeruleoalba</i>	LC	0	0	
Animalia	Mammalia	<i>Tursiops truncatus</i>	LC	1	0	
Animalia	Mammalia	<i>Ziphius cavirostris</i>	LC	0	0	
Animalia	Maxillopoda	<i>Megabalanus azoricus</i>		0	0	1
Animalia	Reptilia	<i>Caretta caretta</i>	EN	1	1	
Animalia	Reptilia	<i>Dermochelys coriacea</i>	CR	0	1	
Plantae	Liliopsida	<i>Zostera marina</i>	NE	0	0	

Annex 3: Reference list for habitats in the NEA database

Code	French name	English name
1110	Bancs de sable à faible couverture permanente d'eau marine	Sandbanks which are slightly covered by sea water all the time
1130	Estuaires	Estuaries
1140	Replats boueux ou sableux exondés à marée basse	Mudflats and sandflats not covered by seawater at low tide
1150	Lagunes côtières	Coastal lagoons
1160	Grandes criques et baies peu profondes	Large shallow inlets and bays
1170	Récifs	Reefs
1180	Structures sous-marines causées par des émissions de gaz	Submarine structures made by leaking gases
1210	Végétation annuelle des laissés de mer	Annual vegetation of drift lines
1220	Végétation vivace des rivages de galets	Perennial vegetation of stony banks
1230	Falaises avec végétation des côtes atlantiques et baltiques	Vegetated sea cliffs of the Atlantic and Baltic Coasts
1240	Falaises avec végétation des côtes méditerranéennes avec <i>Limonium</i> spp. endémiques	Vegetated sea cliffs of the Mediterranean coasts with endemic <i>Limonium</i> spp.

1250	Falaises avec flore endémique des côtes macaronésiennes	Vegetated sea cliffs with endemic flora of the Macaronesian coasts
1310	Végétations pionnières à Salicornia et autres espèces annuelles des zones boueuses et sableuses	Salicornia and other annuals colonizing mud and sand
1320	Prés à Spartina (<i>Spartinion maritima</i>)	Spartina swards (<i>Spartinion maritima</i>)
1330	Prés salés atlantiques (<i>Glauco-Puccinellietalia maritima</i>)	Atlantic salt meadows (<i>Glauco-Puccinellietalia maritima</i>)
1340	Prés salés intérieurs	Inland salt meadows
1410	Prés-salés méditerranéens (<i>Juncetalia maritimi</i>)	Mediterranean salt meadows (<i>Juncetalia maritimi</i>)
1420	Fourrés halophiles méditerranéens et thermo-atlantiques (<i>Sarcocornetea fruticosi</i>)	Mediterranean and thermo-Atlantic halophilous scrubs (<i>Sarcocornetea fruticosi</i>)
1430	Fourrés halo-nitrophiles (<i>Pegano-Salsoletea</i>)	Halo-nitrophilous scrubs (<i>Pegano-Salsoletea</i>)
1510	Steppes salées méditerranéennes (<i>Limonietalia</i>)	Mediterranean salt steppes (<i>Limonietalia</i>)
8330	Grottes marines submergées ou semi-submergées	Submerged or partially submerged sea caves
EUNIS	A6.9 Structures émettrices de gaz ou de liquide, habitats hypoxiques et anoxiques profonds	A6.9 Vents, seeps, hypoxic and anoxic habitats of the deep sea
EUNIS	A4.7 Habitats particuliers rocheux infralittoraux	A4.7 Features of circalittoral rock
EUNIS	A5.1 Sédiment grossier subtidal	A5.1 Sublittoral coarse sediment
EUNIS	A5.2 Sable subtidal	A5.2 Sublittoral sand
EUNIS	A5.3 Vase subtidale	A5.3 Sublittoral mud
EUNIS	A5.4 Sédiments hétérogènes subtidaux	A5.4 Sublittoral mixed sediments
EUNIS	A5.5 Sédiment subtidal dominé par des macrophytes	A5.5 Sublittoral macrophyte-dominated sediment
EUNIS	A5.6 Récifs biogènes subtidaux	A5.6 Sublittoral biogenic reefs
EUNIS	A5.7 Habitats sédimentaires particuliers subtidaux	A5.7 Features of sublittoral sediments
EUNIS	A6.1 Roche et substrats durs artificiels profonds	A6.1 Deep-sea rock and artificial hard substrata
EUNIS	A6.2 Substrats hétérogènes profonds	A6.2 Deep-sea mixed substrata
EUNIS	A6.3 Sable profond	A6.3 Deep-sea sand
EUNIS	A6.4 Sable vaseux profond	A6.4 Deep-sea muddy sand
EUNIS	A6.5 Vase profonde	A6.5 Deep-sea mud
EUNIS	A6.6 Biohermes profonds	A6.6 Deep-sea bioherms
EUNIS	A6.7 Reliefs proéminents profonds	A6.7 Raised features of the deep-sea bed
EUNIS	A6.8 Fosses océaniques, canyons, chenaux, ruptures de pente et éboulements sur la pente continentale	A6.8 Deep-sea trenches and canyons, channels, slope failures and slumps on the continental slope
EUNIS	A1.1 Roche intertidale sous fort hydrodynamisme	A1.1 High energy littoral rock
EUNIS	A2.3 Vase intertidale	A2.3 Littoral mud
EUNIS	A7.1 Neuston	A7.1 Neuston
EUNIS	A4.6 Roche circalittorale de la Baltique en mode abrité	A4.6 Baltic sheltered circalittoral rock
EUNIS	A7.2 Completely mixed water column with reduced salinity	A7.2 Completely mixed water column with reduced salinity
EUNIS	A7.3 Completely mixed water column with full salinity	A7.3 Completely mixed water column with full salinity
EUNIS	A7.4 Partially mixed water column with reduced salinity and medium or long residence time	A7.4 Partially mixed water column with reduced salinity and medium or long residence time
EUNIS	A7.5 Unstratified water column with reduced salinity	A7.5 Unstratified water column with reduced salinity
EUNIS	A7.6 Vertically stratified water column with reduced salinity	A7.6 Vertically stratified water column with reduced salinity
EUNIS	A7.7 Fronts in reduced salinity water column	A7.7 Fronts in reduced salinity water column
EUNIS	A7.8 Unstratified water column with full salinity	A7.8 Unstratified water column with full salinity
EUNIS	A7.9 Vertically stratified water column with full salinity	A7.9 Vertically stratified water column with full salinity
EUNIS	A7.A Fronts in full salinity water column	A7.A Fronts in full salinity water column
EUNIS	A8.1 Sea ice	A8.1 Sea ice
EUNIS	A8.2 Freshwater ice	A8.2 Freshwater ice
EUNIS	A8.3 Brine channels	A8.3 Brine channels
EUNIS	A8.4 Under-ice habitat	A8.4 Under-ice habitat
EUNIS	A1.2 Roche intertidale sous hydrodynamisme modéré	A1.2 Moderate energy littoral rock
EUNIS	A1.3 Roche intertidale sous faible hydrodynamisme	A1.3 Low energy littoral rock
EUNIS	A1.4 Habitats rocheux intertidaux particuliers	A1.4 Features of littoral rock
EUNIS	A2.1 Sédiments grossiers intertidaux	A2.1 Littoral coarse sediment
EUNIS	A2.2 Sable et sable vaseux intertidaux	A2.2 Littoral sand and muddy sand
EUNIS	A2.4 Sédiments hétérogènes intertidaux	A2.4 Littoral mixed sediments
EUNIS	A2.5 Marais salés côtiers et roselières salines	A2.5 Coastal saltmarshes and saline reedbeds
EUNIS	A2.6 Sédiments intertidaux dominés par des Angiospermes aquatiques	A2.6 Littoral sediments dominated by aquatic angiosperms
EUNIS	A2.7 Récifs biogènes intertidaux	A2.7 Littoral biogenic reefs
EUNIS	A2.8 Habitats sédimentaires particuliers intertidaux	A2.8 Features of littoral sediment
EUNIS	A3.1 Roche infralittorale de l'Atlantique et de la Méditerranée sous fort hydrodynamisme	A3.1 Atlantic and Mediterranean high energy infralittoral rock
EUNIS	A3.2 Laminaires et algues rouges sur roche infralittorale sous hydrodynamisme modéré	A3.2 Atlantic and Mediterranean moderate energy infralittoral rock
EUNIS	A3.3 Roche infralittorale de l'Atlantique et de la Méditerranée sous faible hydrodynamisme	A3.3 Atlantic and Mediterranean low energy infralittoral rock
EUNIS	A3.4 Roche infralittorale de la Baltique en mode battu	A3.4 Baltic exposed infralittoral rock
EUNIS	A3.5 Roche infralittorale de la Baltique en mode semibattu	A3.5 Baltic moderately exposed infralittoral rock

EUNIS	A3.6 Roche infralittorale de la Baltique en mode abrité	A3.6 Baltic sheltered infralittoral rock
EUNIS	A3.7 Habitats particuliers rocheux infralittoraux	A3.7 Features of infralittoral rock
EUNIS	A4.1 Roche circalittorale de l'Atlantique et de la Méditerranée sous fort hydrodynamisme	A4.1 Atlantic and Mediterranean high energy circalittoral rock
EUNIS	A4.2 Roche circalittorale de l'Atlantique et de la Méditerranée sous hydrodynamisme modéré	A4.2 Atlantic and Mediterranean moderate energy circalittoral rock
EUNIS	A4.4 Roche circalittorale de la Baltique en mode battu	A4.4 Baltic exposed circalittoral rock
EUNIS	A4.3 Roche circalittorale de l'Atlantique et de la Méditerranée sous faible hydrodynamisme	A4.3 Atlantic and Mediterranean low energy circalittoral rock
EUNIS	A4.5 Roche circalittorale de la Baltique en mode semibattu	A4.5 Baltic moderately exposed circalittoral rock
OSPAR	Communautés des calcaires du littoral	Littoral chalk communities
OSPAR	Bancs de <i>Modiolus modiolus</i>	<i>Modiolus modiolus</i> beds
OSPAR	Herbiers de <i>Zostera</i> (<i>Zostera marina</i> , <i>Zostera noltii</i>)	<i>Zostera</i> beds
OSPAR	Vasières intertidales	Intertidal mudflats
OSPAR	Colonies de pennatules et mégafaune fouisseuse	Sea-pen and burrowing megafauna communities
OSPAR	Jardins de coraux mous	Coral Gardens
OSPAR	Herbiers de cymodocés	<i>Cymodocea</i> meadows
OSPAR	Monts carbonatés	Carbonate mounds
OSPAR	Dorsales océaniques comportant des sources hydrothermales	Oceanic ridges with hydrothermal vents/fields
OSPAR	Bancs de maërl	Maerl beds
OSPAR	Monts sous-marins	Seamounts
OSPAR	Agregation d'éponge de grands fonds	Deep-sea sponge aggregations
OSPAR	Banc intertidaux à <i>Mytilus edulis</i> sur substrats mixtes et sableux	Intertidal <i>Mytilus edulis</i> beds on mixed and sandy sediments
OSPAR	Récifs à <i>Sabellaria spinulosa</i>	<i>Sabellaria spinulosa</i> reefs
OSPAR	Bancs d' <i>Ostrea edulis</i>	<i>Ostrea edulis</i> beds
OSPAR	Récifs à <i>Lophelia pertusa</i>	<i>Lophelia pertusa</i> reefs

Annex 4: Detailed maps of the network

REGION III OSPAR - CELTIC SEAS Marine protected areas network

EDITEE LE :






11/2017

International marine protected areas

-  Wetlands of international importance
Ramsar convention
-  Marine protected area OSPAR
-  Natura 2000 - Birds directive
-  Natura 2000 - Habitats directive

National marine protected areas

France

-  Réserve naturelle
-  Aires de protection du biotope
-  Domaine public maritime du Conservatoire du littoral
-  Parc naturel marin
-  Réserve de biosphère UNESCO



United-Kingdom

-  Marine nature reserve
-  Marine conservation zone
-  Nature conservation marine protected area
-  Sites of special scientific interest
-  Area of special scientific interest

Marine protected areas project

-  Natura 2000 - Birds directive
-  Natura 2000 - Habitats directive
-  Marine conservation zone

Maritime boundaries

-  Région III OSPAR - Celtic seas
-  Territorial sea boundary or continental shelf under law and bilateral agreement

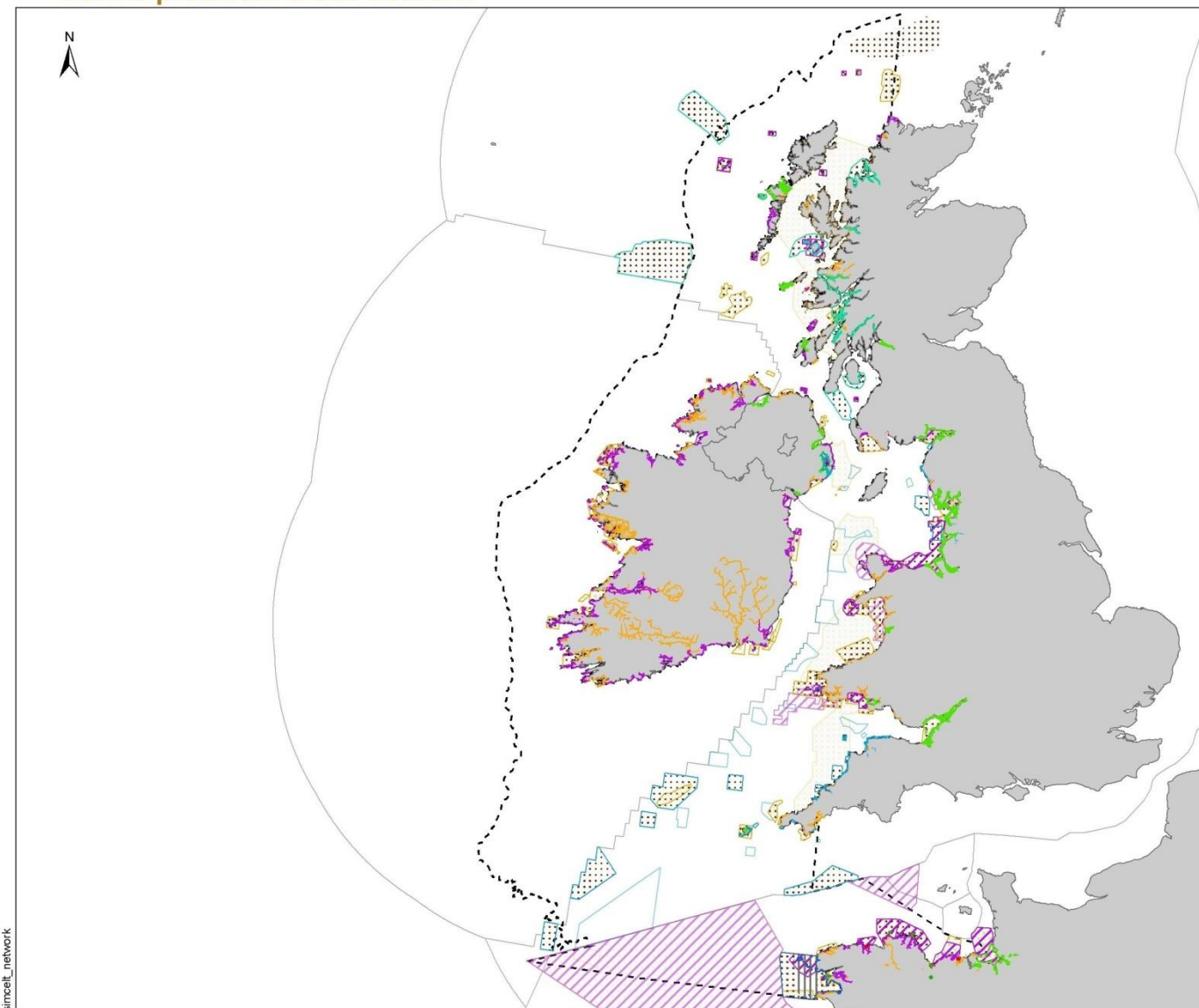
0 100 200 kilometers

0 50 100 nautical miles

Data source :
 - MPA perimeter : Joint Nature Conservation Committee, Natural England, Department of agriculture, environment and rural affairs of Northern Ireland, National Parks & Wildlife Service, Scottish natural heritage, Agence française pour la biodiversité, 2017
 - States boundaries : FAO
 - Maritime boundaries : Flanders Marine Institute and AFB 2017

Coordinate system : Lambert 93 / RGF93 / IAG GRS 1980

**AGENCE FRANÇAISE
POUR LA BIODIVERSITÉ**
ÉTABLISSEMENT PUBLIC DE L'ÉTAT

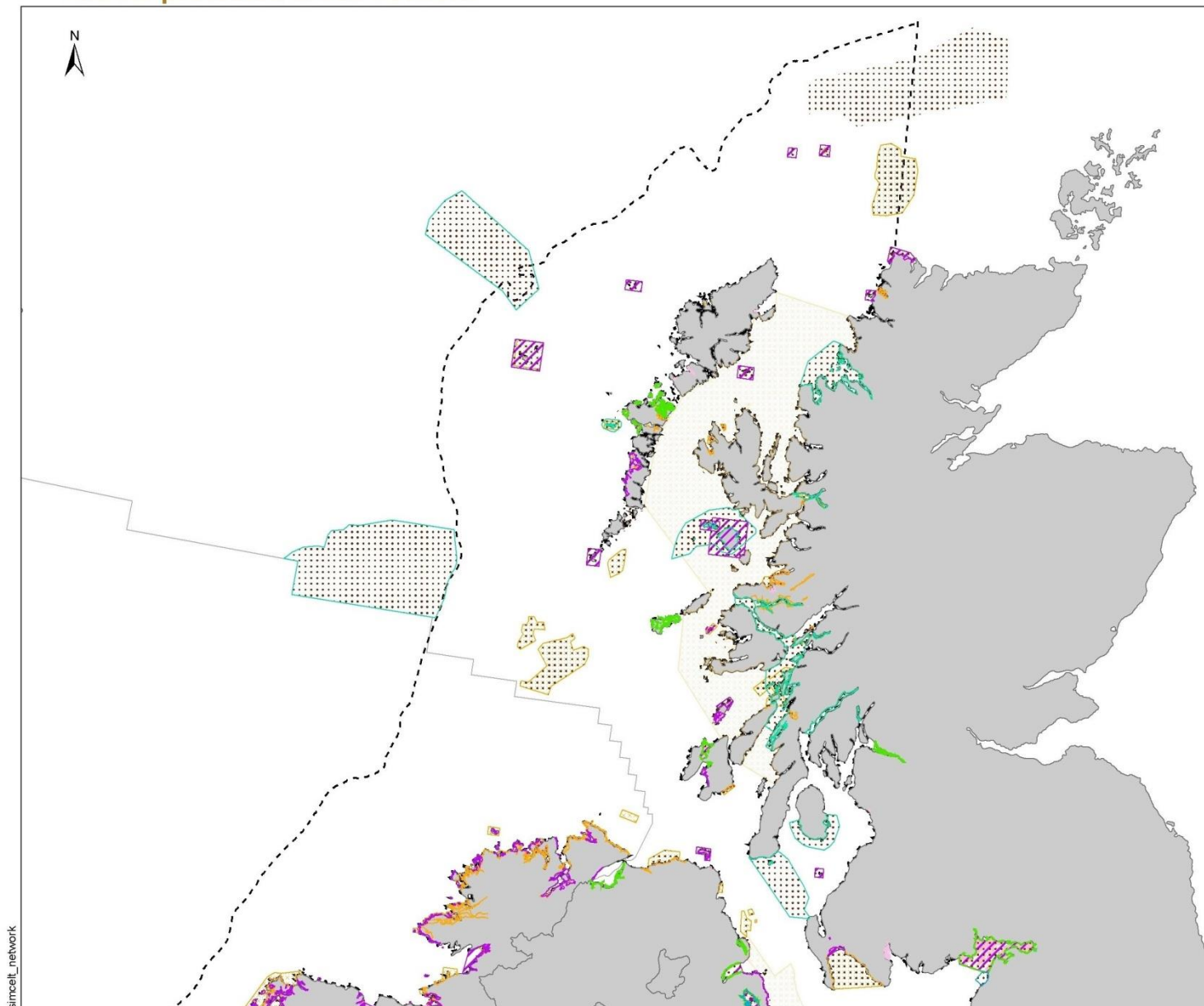


sinceit_network

REGION III OSPAR - CELTIC SEAS NORTH PART
Marine protected areas network

EDITEE LE :

11/2017



International marine protected areas

- Wetlands of international importance
Ramsar convention
- Marine protected area OSPAR
- Natura 2000 - Birds directive
- Natura 2000 - Habitats directive

National marine protected areas

France

- Réserve naturelle
- Aires de protection du biotope
- Domaine public maritime du Conservatoire du littoral
- Parc naturel marin
- Réserve de biosphère UNESCO

United-Kingdom

- Marine nature reserve
- Marine conservation zone
- Nature conservation marine protected area
- Sites of special scientific interest
- Area of special scientific interest

Marine protected areas project

- Natura 2000 - Birds directive
- Natura 2000 - Habitats directive
- Marine conservation zone

Maritime boundaries

- Région III OSPAR - Celtic seas
- Territorial sea boundary or continental shelf under law and bilateral agreement

0 50 100 kilometers



0 25 50 nautical milles



Data source :
 - MPA perimeter : Joint Nature Conservation Committee, Natural England, Department of agriculture, environment and rural affairs of Northern Ireland, National Parks & Wildlife Service, Scottish natural heritage, Agence française pour la biodiversité, 2017
 - States boundaries : FAO
 - Maritime boundaries : Flanders Marine Institute and AFB 2017

Coordinate system : Lambert 93 / RGF93 / IAG GRS 1980

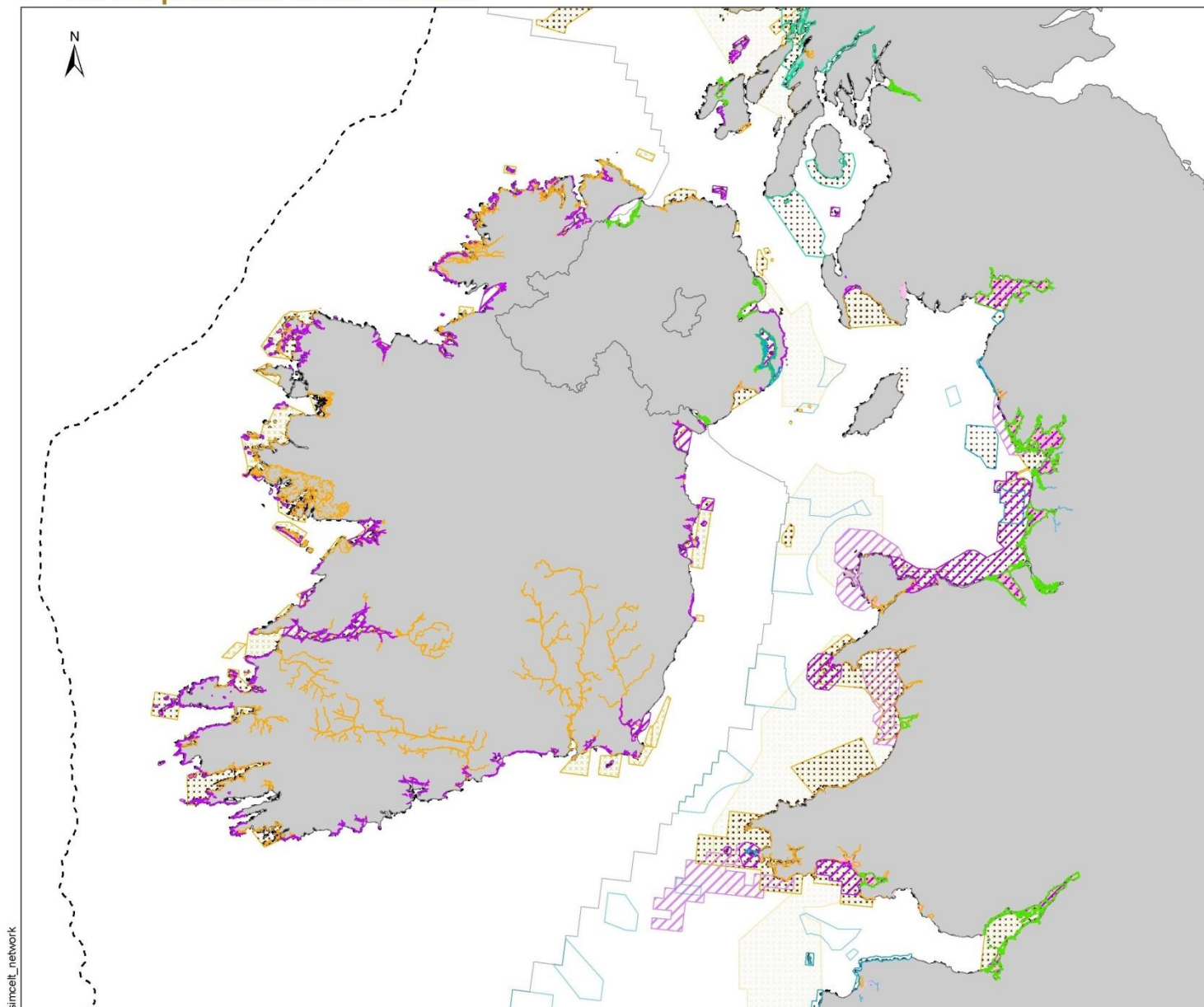
**AGENCE FRANÇAISE
 POUR LA BIODIVERSITÉ**
 ÉTABLISSEMENT PUBLIC DE L'ÉTAT

simceit_network

REGION III OSPAR - CELTIC SEAS CENTRAL PART
Marine protected areas network

EDITEE LE :

11/2017



International marine protected areas

- Wetlands of international importance Ramsar convention
- Marine protected area OSPAR
- Natura 2000 - Birds directive
- Natura 2000 - Habitats directive

National marine protected areas

France

- Réserve naturelle
- Aires de protection du biotope
- Domaine public maritime du Conservatoire du littoral
- Parc naturel marin
- Réserve de biosphère UNESCO

United-Kingdom

- Marine nature reserve
- Marine conservation zone
- Nature conservation marine protected area
- Sites of special scientific interest
- Area of special scientific interest

Marine protected areas project

- Natura 2000 - Birds directive
- Natura 2000 - Habitats directive
- Marine conservation zone

Maritime boundaries

- Région III OSPAR - Celtic seas
- Territorial sea boundary or continental shelf under law and bilateral agreement

0 50 100 kilometers
 0 25 50 nautical milles

Data source :
 - MPA perimeter : Joint Nature Conservation Committee, Natural England, Department of agriculture, environment and rural affairs of Northern Ireland, National Parks & Wildlife Service, Scottish natural heritage, Agence française pour la biodiversité, 2017
 - States boundaries : FAO
 - Maritime boundaries : Flanders Marine Institute and AFB 2017

Coordinate system : Lambert 93 / RGF93 / IAG GRS 1980

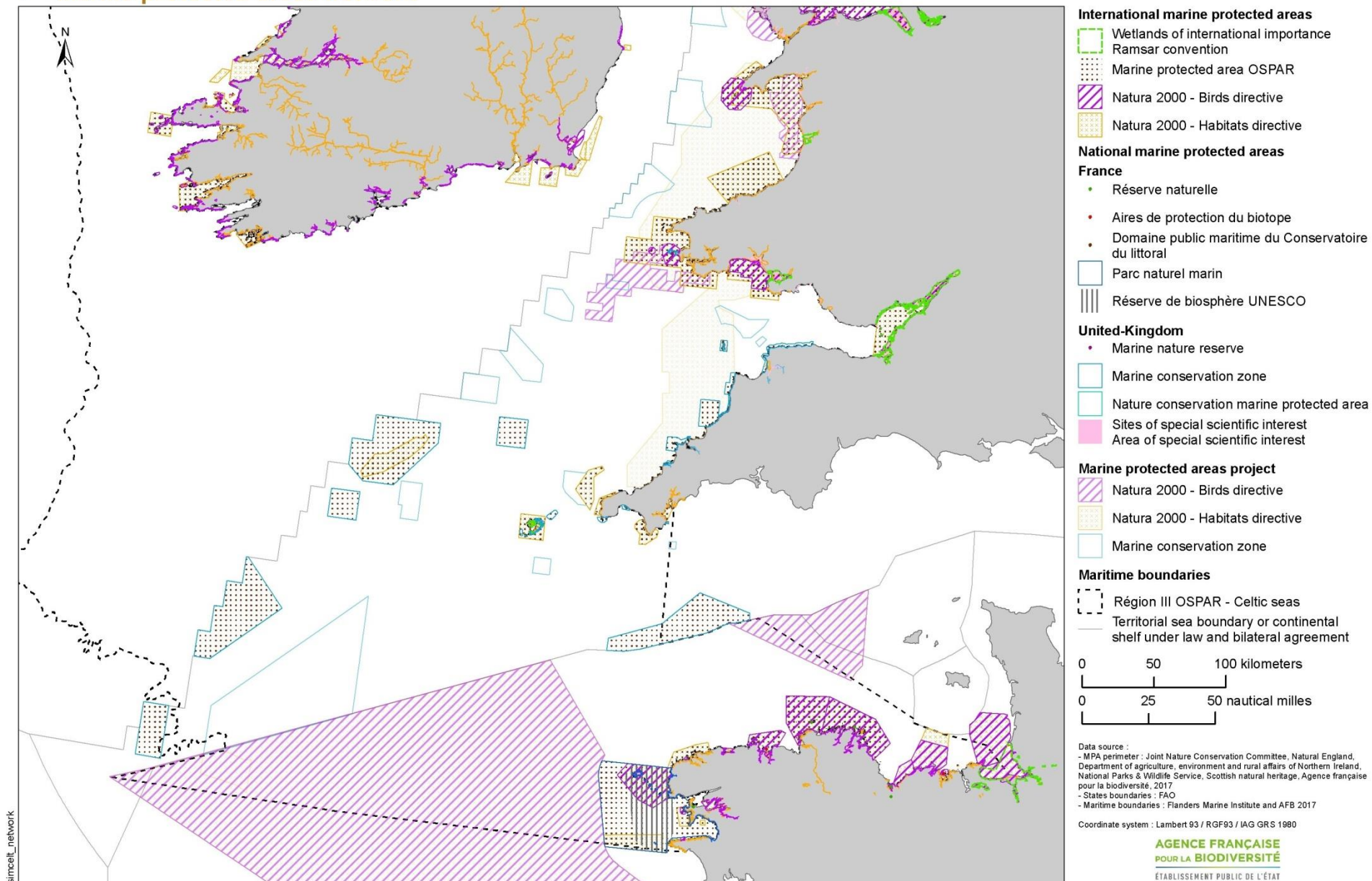
**AGENCE FRANÇAISE
 POUR LA BIODIVERSITÉ**
 ÉTABLISSEMENT PUBLIC DE L'ÉTAT

simceit_network

REGION III OSPAR - CELTIC SEAS SOUTH PART
Marine protected areas network

EDITEE LE :

11/2017



simceit_network

7. BIBLIOGRAPHY

Carolin C. *et al*, Aires Marines protégées de l'Atlantique: vers une convergence des données, Géomatique Expert, N° 101, Novembre-Décembre 2014, pages 56-63

Eynaudi A. *et al*, Base de données du réseau d'aires marines protégées de l'Arc atlantique développement, état des lieux et perspectives, Agence des aires marines protégées, novembre 2012

De Magalhaes, A.V.T., Likhacheva K., Fartaoui, M., and Alloncle, N. 2018. Marine Protected Areas in the Celtic Seas – Analysis of National Frameworks. EU Project Grant No.: EASME/EMFF/2014/1.2.1.5/3/SI2.719473 MSP Lot 3. Supporting Implementation of Maritime Spatial Planning in the Celtic Seas (SIMCelt). French Agency for Biodiversity. 60 pp.

Rees S. *et al*, Assessment of the Ecological Coherence of the MPA Network in the Celtic Seas : A report for WWF-UK by the Marine Institute, Plymouth University and The Marine Biological Association of the United Kingdom, 2015