



D3.3

Data sharing for MSP: Country factsheets

SIMAtlantic (www.simatlantic.eu) is a two-year EU-funded project (2019-21) supporting the establishment and implementation of maritime spatial planning (MSP) in five European countries: France, Ireland, Portugal, Spain and the United Kingdom.

The project has established an Atlantic-wide data and information catalogue (<https://services.mspdata.eu/home/en/simatlantic>) supported by information on how data for MSP is organised in each country – how it is monitored, assessed and kept. This document is a compilation of factsheets summarising that country-specific information. They bring together information relating to MSP and address technical questions relating to national geoportals and how they operate, the technical choices, data accessibility etc.

Each country factsheet is also available individually:

[Data sharing factsheet – France](#)

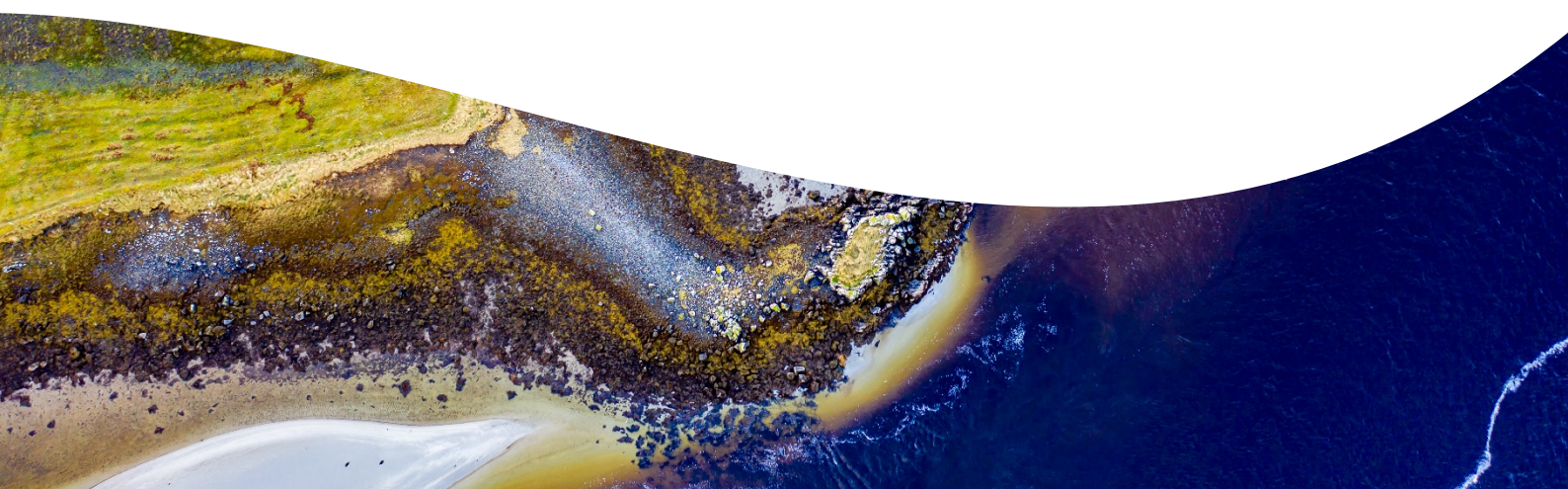
[Data sharing factsheet – Spain](#)

[Data sharing factsheet – Ireland](#)

[Data sharing factsheet – England](#)

[Data sharing factsheet – Portugal](#)

[Data sharing factsheet - Northern Ireland](#)



FACTSHEET - FRANCE

Supporting Implementation of Maritime
Spatial Planning
In the Atlantic region



WP.3 – Theme 3: Data use and sharing



European Commission
Directorate-General for Maritime Affairs and Fisheries



INTRODUCTION

A factsheet related to data sharing for MSP is established regarding each country of SIMAtlantic project. It brings together information relating to MSP and addresses some technical questions relating to the operation of the national geoportal, the technical choices, the available sources, the data accessibility ...

This content is used to feed the information disseminated on the SIMAtlantic data portal (simatlantic.mspdata.eu), through different means: geodata, preconfigured maps, dashboard and associated web pages.

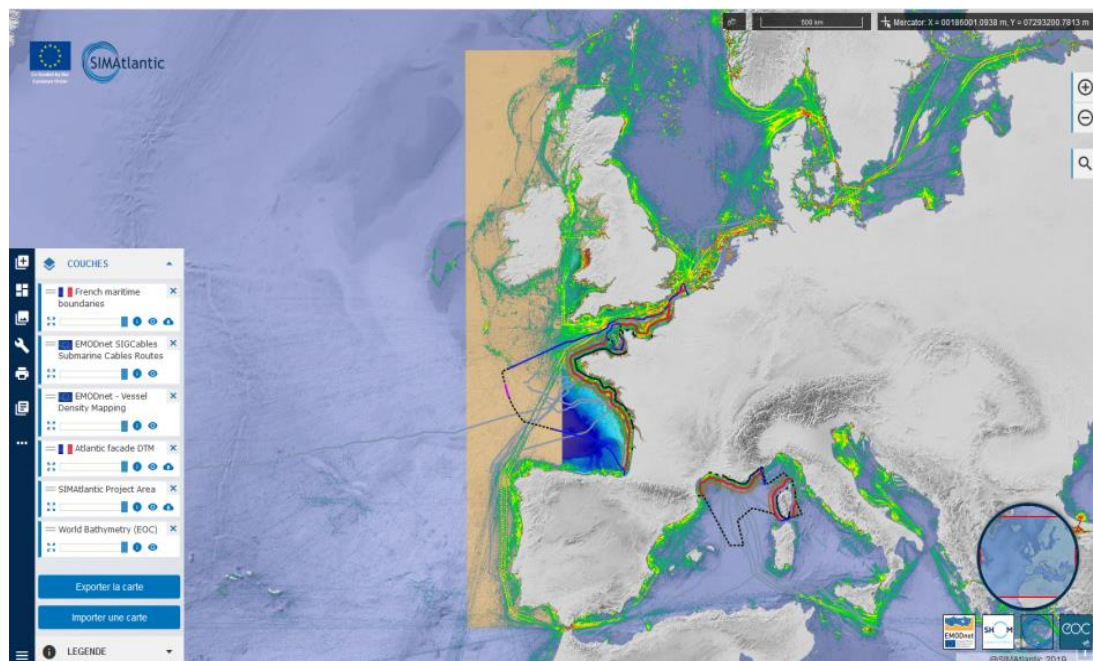
SIMATLANTIC DATA PORTAL

SIMAtlantic data portal aims to ease the access and share of the States data relevant for the MSP in the Atlantic region. In particular it is used to bring together the datasets related to the national plans.

SIMAtlantic data catalogue intends to cover the whole themes relating to MSP; maritime and terrestrial boundaries, regulatory limits, environmental, physical and biological characteristics, uses and activities, and national plans.

A major requirement for publication on SIMAtlantic data portal is the availability of metadata record and that data is available in web services.

The data related to France are available for consultation at simatlantic.mspdata.eu. The data catalogue groups the data by themes categories, and then by country.





Regarding France, the sources of the data published on SIMAtlantic data portal are:

- Available datasets published on some data portal of reference
- A non-exhaustive list of datasets used to establish the Sea Basin Strategy Documents. It was communicated in 2017 by CEREMA in the framework of SIMNORAT and SIWESTMED projects. Not all have been published on the data portal as they were not fulfilling the requirements.
- Complementary data and metadata used to establish the Sea Basin Strategy Documents, identified by analysing the information contained in the documents related to NAMO and SA regions: data used to construct the DSF maps when they are clearly identified on the map legends and sources.
- The WMS data layer disseminated by Geolittoral and the associated metadata catalogue.

FRANCE MSP process

| | | |
|------------------------------------|--|---|
| MSP Directive transcription | <i>National legislative document which transcribes the MSP Directive</i> | LAW n ° 2016-1087 of 8 August 2016 for the recovery of biodiversity, nature and landscapes |
| National policies | <i>Other national legislative documents in force for the MSP</i> | National Strategy for the Sea and Coast (SNML - 2017) Decree n° 2017-724 of 3rd May 2017 |
| Competent authority | <i>Competent authority in charge of MSP at national level</i> | Ministry of the Sea |
| Delegated authority | <i>Delegated authority to implement MSP</i> | On the scale of maritime façades authority for drawing up plans: 4 pairs of regional and maritime Prefects coordinators |
| National MSP plans | <i>Name of the MSP plan</i> | Sea Basin Strategic Document (DSF) : Strategic component adopted in 2019, operational component in the process of being established |
| MSP plans URL | <i>Plan consultation address</i> | Access to plans in national language http://www.dirm.memn.developpement-durable.gouv.fr/document-strategique-de-facade-maritime-dsf-r268.html http://www.dirm.nord-atlantique-manche-ouest.developpement-durable.gouv.fr/document-strategique-de-facade-dsf-r188.html http://www.dirm.sud-atlantique.developpement-durable.gouv.fr/le-document-strategique-de-la-facade-dsf-sud-r484.html http://www.dirm.mediterranee.developpement-durable.gouv.fr/le-document-strategique-de-facade-mediterranee-r335.html Access to plans in English (summary for consultation - not yet updated post adoption)) http://www.geolittoral.developpement-durable.gouv.fr/documents-english-version-r549.html |
| Marine plans number | <i>Number of plans drawn up by the State</i> | 4 vocation maps: Eastern Channel-North Sea, North-Atlantic and Western Channel, South Atlantic, Mediterranean coast. |
| Covering | <i>Maritime area covered by the national plan</i> | Metropolitan France and overseas territories that includes <ul style="list-style-type: none"> • Internal waters • Territorial seas • Exclusive Economic Zone • Continental Shelf |
| MSP Geoportal | <i>Name of the national geoportal dedicated to MSP</i> | Geolittoral |
| MSP Geoportal URL | <i>Address of the national geoportal dedicated to MSP</i> | http://cerema.maps.arcgis.com/apps/webappviewer/index.html?id=3a1cc8e6d52c4c4cb85fc8fe404f5f06 |
| Access to spatial plan | <i>Mean of access to spatial plans</i> | Access to the visualization of the vocations zone map http://cerema.maps.arcgis.com/apps/webappviewer/index.html?id=3a1cc8e6d52c4c4cb85fc8fe404 |

| | | |
|--|---|---|
| | | <p>f5f06</p> <p>DIRM MEMN : http://www.dirm.memn.developpement-durable.gouv.fr/IMG/pdf/fiches_zones_carte_vocations.pdf</p> <p>DIRM NAMO : http://www.dirm.nord-atlantique-manche-ouest.developpement-durable.gouv.fr/IMG/pdf/annexe_8_vf_light_cle2759af.pdf</p> <p>DIRM SA : http://www.dirm.sud-atlantique.developpement-durable.gouv.fr/IMG/pdf/08_annexe_8-p1-2.pdf</p> <p>DIRM MED : http://www.dirm.mediterranee.developpement-durable.gouv.fr/IMG/pdf/def_annexe6_fiches_par_zones_0919_compresses.pdf</p> |
| Access to plan boundaries | <i>Mean of access to plan boundaries</i> | Yes: Access to visualization, download and web services to vocation map areas (by sea front) http://www.geolittoral.developpement-durable.gouv.fr/telechargement-en-ligne-donnees-geolittoral-a802.html#sommaire_16 |
| Access to data evidence (input) | <i>Means of access to the data used to draw up the plans</i> | A viewer had been used for the preparatory work: https://cerema.maps.arcgis.com/apps/MapJournal/index.html?appid=b25ad4b280304f5891af975141716a3f |
| Web services | <i>Is there a MSP data web service harvestable by the SIMAtlantic portal?</i> | Yes: http://geolittoral.din.developpement-durable.gouv.fr/wxs and Et http://www.ifremer.fr/services/wms/dcsmm |
| Metadata | <i>Is there a MSP metadata catalogue harvestable by the SIMAtlantic portal?</i> | Yes : http://www.geocatalogue.fr/Detail.do?fileIdentifiant=da2a175d-c5ba-444f-94f7-bd5a1cc44520 |
| National sources | <i>National sources used for populating the SIMAtlantic portal</i> | Ministère de la Transition Ecologique et Solidaire (MTES) – Ministère de l'Économie, de l'Industrie et de l'Emploi – Institut Français de Recherche pour l'Exploitation de la Mer (Ifremer) – Open Street Map (OSM) – Cèdre – Service Hydrographique et Océanographique de la Marine (Shom) – Musée national d'Histoire naturelle (MNHN) – Observatoire national des Zones Humides (ONZH) – Centre d'études et d'expertise sur les risques, l'environnement, la mobilité et l'aménagement (Cerema) – Office français de la biodiversité (OFB) |



QUESTIONS

French data

1. The main information related to MSP in France used to develop the SIMAtlantic portal content are brought together in the table "France MSP process". Is this information correct?
In addition, the DCSMM data must be valorised because they have been taken into account in the process of defining the zones of the vocation maps (<http://www.ifremer.fr/services/wms/dcsmm>)

On the other hand, the vocation maps were mainly constructed from Sea basin strategic documents data and relatively little from DCSMM data.
2. Is there an existing and available list of the datasets used to establish the part 1 of the Sea Basin Strategy Document?
These data were made available on a viewer for the preparatory work:
<https://cerema.maps.arcgis.com/apps/MapJournal/index.html?appid=b25ad4b280304f5891af975141716a3f>.
To date the list of these data does not exist, but this inventory is carried out within the framework of other projects such as the MREs (http://geolittoral.din.developpement-durable.gouv.fr/telechargement/tutoriels/liste_des_donnees_visualiseur_debat_public_EMR.pdf).

The question of updating these data is to be dealt with. It is in fact essential to provide for regular updating, as is the case, for example, with MRE planning projects.
3. Are these datasets available and in which formats?
They are currently only viewable. They come either from co-viewing services or from "hard storage". No technical difficulties in making them available.
4. In addition to the service web provided by Geolittoral, to access to the data used to establish the DSF, are there other datasets sources? (in the limits of the licenses)
[See answer to point 3.](#)
5. Are the sources of the data related to France on the SIMAtlantic portal, the one used to establish the Sea Basin Strategic Documents? In particular, in some cases, the same or nearly the same information is provided by several sources (For example, Natura 2000 areas are disseminated by Cartomer and by the MNHM).
[Yes, the data used come as far as possible from reference sources.](#)
6. Do additional relevant datasets to be shared with the other countries of SIMAtlantic project exist, in particular dealing with transnational issues?
[Work is under way to work on the integration of activity, regulatory, usage and environmental data from cross-border countries into Geolittoral viewers.](#)

CONTACT

Shom
French hydrographic office
Geomatics Department

Maritime spatial planning office
pem@shom.fr

Project Manager
Dominique CARVAL
Tel: +33 (0)2 56 31 23 68
dominique.carval@shom.fr



SIMAtlantic Data Dissemination Manager
Magali ABJEAN
Tel: +33 (0)2 56 31 26 35
magali.abjean@shom.fr

FACTSHEET - IRELAND

Supporting Implementation of Maritime
Spatial Planning
In the Atlantic region



WP.3 – Theme 3: Data use and sharing



European Commission
Directorate-General for Maritime Affairs and Fisheries



INTRODUCTION

A factsheet related to data sharing for MSP is established regarding each country of SIMAtlantic project. It brings together an information relating to MSP and addresses some technical questions relating to the operation of the national geoportal, the technical choices, the available sources, the data accessibility ...

This content is used to feed the information disseminated on the SIMAtlantic data portal (simatlantic.mspdata.eu), through different means: geodata, preconfigured maps, dashboard and associated web pages.

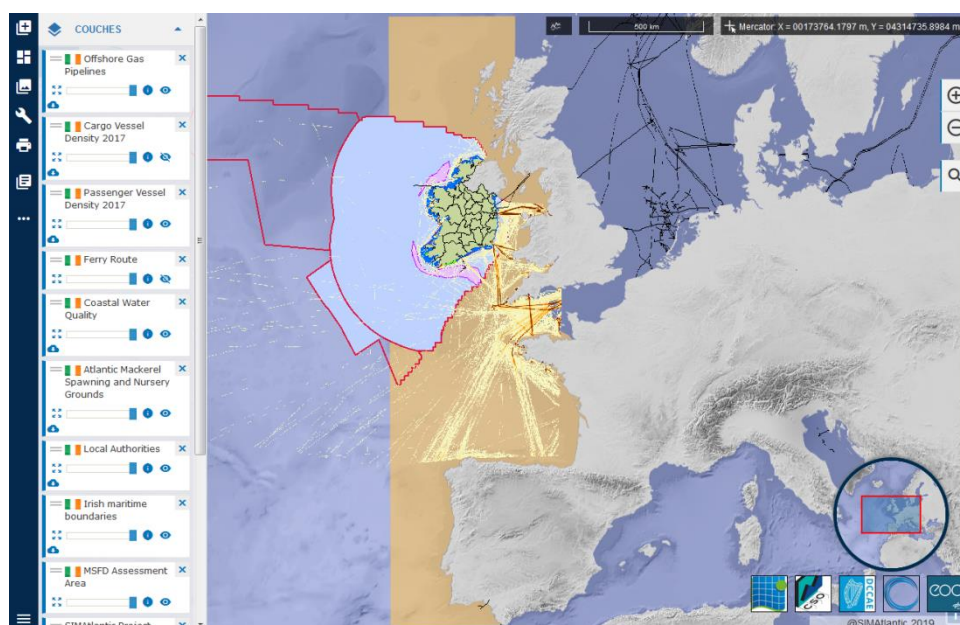
SIMATLANTIC DATA PORTAL

The SIMAtlantic data portal aims to ease the access and enable sharing data relevant for the MSP relating to countries of the SIMAtlantic project (Portugal, Spain, France, Ireland, England and Northern Ireland). In particular it is used to bring together the datasets related to the national marine spatial plans.

The SIMAtlantic data catalogue intends to cover the all themes relating to MSP including maritime and terrestrial boundaries, regulatory limits, environmental, physical and biological characteristics, uses and activities, and national plans.

A major quality assurance requirement that must be met to enable publication on the SIMAtlantic data portal is the availability of metadata record and that data is available in web services.


The data sets related to Ireland are available for consultation at simatlantic.mspdata.eu. The data catalogue groups the data by themes categories, and then by country.





IRELAND MSP PROCESS

| | | |
|--|--|--|
| MSP Directive transcription | <i>National legislative document which transcribes the MSP Directive</i> | European Union (Framework For Maritime Spatial Planning) Regulations 2016 Planning and Development (Amendment) Act 2018 |
| National policies | <i>Other national legislative documents in force for the MSP</i> | Marine Planning Policy Statement 2019 : https://www.housing.gov.ie/planning/marine-planning/marine-planning-policy-statement Marine Planning and Development Management Bill (in development): https://www.housing.gov.ie/planning/marine-spatial-planning/foreshore/marine-planning-and-development-management-bill Harnessing Our Ocean Wealth (HOOW 2012 - an Integrated Marine Plan for Ireland) : https://www.ouroceanwealth.ie/sites/default/files/sites/default/files/Harnessing%20Our%20Ocean%20Wealth%20Report.pdf |
| Competent authority | <i>Competent authority in charge of MSP at national level</i> | Department for Housing, Local Government and Heritage (DHLGH) |
| Delegated authority | <i>Delegated authority to implement MSP</i> | / |
| National MSP plans | <i>Name of the MSP plan</i> | National Marine Planning Framework (NMPF) – consultation draft published in 2019 – final version is expected for 2021 |
| MSP plans URL | <i>Plan consultation address</i> | https://www.housing.gov.ie/sites/default/files/public-consultation/files/draft_national_marine_planning_framework_final.pdf |
| Number of marine plans | <i>Number of plans drawn up by the State</i> | 1 marine plan |
| Covering | <i>Maritime area covered by the national plan</i> | Internal waters Territorial seas Exclusive Economic Zone Continental Shelf |
| MSP Geoportal | <i>Name of the national geoportal dedicated to MSP</i> | Marine Atlas hosted by Marine Institute |
| Geoportal URL | <i>Address of the national geoportal</i> | https://atlas.marine.ie/ |
| Access to spatial plan | <i>Means of access to the plan</i> | Access in visualisation and access in web service Layer: National Marine Planning Framework Area (only WMS Marine Institute) |
| Access to data evidence (input) | <i>Means of access to the data used to draw up the plans</i> | Access in visualisation Access for a small part in web service |
| Web services | <i>Is there a MSP data web service harvestable by the Shom SDI?</i> | Yes, there are harvestable WFS and WMS for part of the data. Disseminate by ESRI ArcGIS REST API There is one web service for each dataset, for example : http://atlas.marine.ie/arcgis/services/Fisheries/MapServer/WMServer? |

| | | |
|--|---|---|
|  Metadata | <i>Is there a MSP metadata catalogue harvestable by the Shom SDI?</i> | <p>Yes, two metadata catalogue harvested:</p> <ul style="list-style-type: none"> *Irish Spatial Data Exchange (ISDE): http://metadata.marine.ie/geonetwork/srv/eng/csw? ; http://www.isde.ie/#/ - *Marine Institute data catalogue : http://data.marine.ie/geonetwork/srv/eng/catalog.search#/search |
| National sources | <i>National sources used for populating the SIMAtlantic portal</i> | <p>Marine Institute – Commissioners of Irish Lights (CIL) – Central Statistics Office (CSO) – Department of Communications, Climate Action & Environment (DCCA) - Centre for Marine and Renewable Energy (MAREI) – University of Cork College (UCC)</p> |



QUESTIONS

Ireland MSP process table

The main information related to MSP in Ireland used to develop the SIMAtlantic portal content are brought together in the table "Ireland MSP process". Is this information correct?

Yes. Note that a new digital tool to support marine planning is being developed between the Department and the Marine Institute that will be launched alongside the NMPF.

Data related to Ireland, SIMAtlantic data portal

1. Are the sources of the data related to Ireland on the SIMAtlantic portal, the ones used to establish the national MSP plans?

The datasets presented on <https://simatlantic.mspdata.eu/#> are correct, especially with regard to the list of data used to compile NMPF maps.

2. Are there other sources for accessing data in web services and their metadata?

No.

3. Are relevant layers missing? If so, which?

See response to n°1 in this section

4. Are there web services that would allow us to publish them on the SIMAtlantic data portal?

No.

5. Do additional relevant datasets to be shared with the other countries of SIMAtlantic project exist, in particular dealing with transnational issues?

Unsure. If examples could be given of datasets beyond those made available / discovered so far for Ireland, the issue should be examined in more detail.

About the Ireland's Marine Atlas

1. Are the data displayed on this portal the one used to develop the national plan?

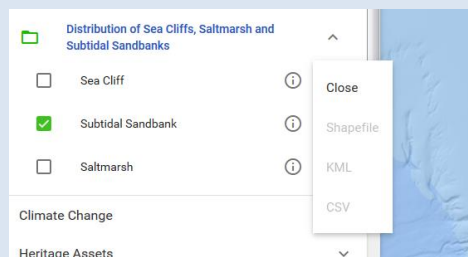
Yes.

2. In general, can you explain how the layer publication on this portal works?

Approved data is loaded or digitised from its source file format into a GIS application where it is converted to the correct geographic projection system for the portal (WGS


1984). The data is styled and labelled appropriately in the application before a new web service is generated and published to the Geographic web server. Using the atlas application, that service is picked up and added to the web portal, where metadata (such as descriptions, download links, etc.) are added manually.

3. Is the data infrastructure based on the web services or on stored data?
A combination – some layers are stores; some are called from web services. Those which are stored are made available to the Atlas as web services.
4. If web services are used, are they harvested or are they consumed? Can you explain your choice,
Where a third-parties web service is called, it is consumed directly into the Atlas to make sure the most up-to-date data is always used.
5. In the download section of the data catalogue, shapefile, kml and csv formats are available but not wms. Why?
This happens when data are made available on a “view-only” arrangement, rather than a “view-and-downlaod” arrangement. It is therefore unlikely they are available for download from another source, but the metadata record should signpost this.
6. The download links are often inactive as shown in the screenshot below. Can you explain why? Is the data downloadable from an other location than the geoportal?



This happens when data are made available on a “view-only” arrangement, rather than a “view-and-downlaod” arrangement. It is therefore unlikely they are available for download from another source, but the metadata record should signpost this.

7. The Marine Institute sets up a web service by themes, for example “tourism” or “fishing”. It makes data sharing a little more complex because it is necessary to recover each web service in order to reuse all the Irish data. Can you indicate why this data organisation was chosen?
This organisation was chosen in order to support the way the front end has been constructed (bearing in mind this has been in place since 2015) and may be revisited in the future.
8. The web services implemented are based on proprietary server software (ArcGIS). Can you explain why this technology is chosen? Does this technology imply interoperability problems with other applications for data sharing?
Esri's services have been used successfully for many years, no data sharing problems



have been encountered via the WMS profiles used. Prototype Open Source approaches have been used in the past and options for potentially having both in parallel continue to be explored.

9. Some data have no metadata link available such as « Harbour seal » or « Grey seal ». Can you explain why? Does a metadata record exist for these layers?

Solutions are being sought to solve the problem by autumn 2020.

10. On the geoportal, the metadata link of the layer « EPA Coastal Water Quality » refers to the “12 Nautical Mile Fisheries Control Ireland” sheet. Similarly, the metadata link of the layers « Protected Wrecks” and « Recorded Ship Wrecks » refers to « All EPA Priority Urban Areas » sheet. Is it normal?

No, it looks like a mistake and research will be carried out to solve it.

SIMAtlantic case studies

1. The « Carlingford lough » and « Lough foyle » areas between Ireland and Northern Ireland are the subject of case study n°1 in the project and piloted by the AFBI. Are the limits of these areas available in web service or in shape?

There is no clear information that these polygons have been definitively defined - the Loughs Agency needs to be able to confirm that this is the case.

2. Similarly, the transnational case study n°4 between Ireland and the United Kingdom concerns the “Irish Sea” the, piloted by the University of Liverpool. Are the limits of the case study area available in web service or in shape?

There is no clear information that these polygons have been definitively defined. It is best to look at the Marine Regions. - <https://www.marineregions.org/>.

CONTACT

Shom
French hydrographic office
Geomatics Department

Maritime spatial planning office
pem@shom.fr

Project Manager
Dominique CARVAL
Tel: +33 (0)2 56 31 23 68
dominique.carval@shom.fr



SIMAtlantic Data Dissemination Manager
Magali ABJEAN
Tel: +33 (0)2 56 31 26 35
magali.abjean@shom.fr

FACTSHEET - PORTUGAL

Supporting Implementation of Maritime
Spatial Planning
In the Atlantic region



WP.3 – Theme 3: Data use and sharing



European Commission
Directorate-General for Maritime Affairs and Fisheries



INTRODUCTION

A factsheet related to data sharing for MSP is established regarding each country of SIMAtlantic project. It brings together information relating to MSP and addresses some technical questions relating to (the operation of the national geoportal, the technical choices, the available sources, the data accessibility ...).

This content is used to feed the information disseminated on the SIMAtlantic data portal (simatlantic.mspdata.eu), through different means: geodata, preconfigured maps, dashboard and associated web pages.

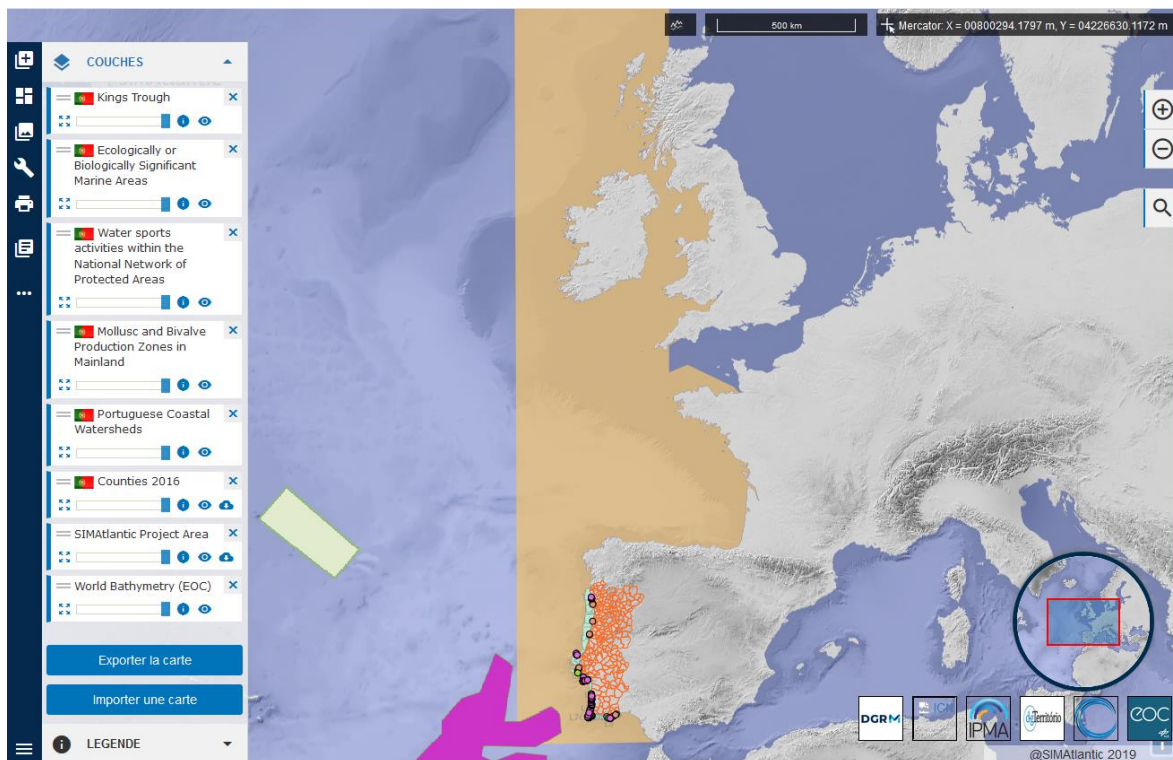
SIMATLANTIC DATA PORTAL

SIMAtlantic data portal aims to ease the access and share of the countries data relevant for the MSP in Atlantic region. In particular it is used to bring together the datasets related to the national plans.

SIMAtlantic data catalogue intends to cover the whole themes relating to MSP; maritime and terrestrial boundaries, regulatory limits, environmental, physical and biological characteristics, uses and activities, and national plans.

A major requirement for publication on SIMAtlantic data portal is the availability of metadata record and that data is available in web services.

The data related to Portugal are available for consultation at simatlantic.mspdata.eu. The data catalogue groups the data by themes categories, and then by country.



PORTUGAL MSP PROCESS

| | | |
|--|--|--|
| MSP Directive transcription | <i>National legislative document which transcribes the MSP Directive</i> | Decree-Law No. 38/2015 Law No. 17/2014 on marine spatial planning and management |
| National policies | <i>Other national legislative documents in force for the MSP</i> | / |
| Competent authority | <i>Competent authority in charge of MSP at national level</i> | Ministry of the Sea |
| Delegated authority | <i>Delegated authority to implement MSP</i> | Directorate General of Natural Resources, Security and Maritime Services – DGRM Regional Planning and Environment Directorate of the Regional Government of Madeira (DRAM) Regional Directorate of Maritime Affairs of the Regional Government of the Azores (DROTA) |
| National MSP plans | <i>Name of the MSP plan</i> | Plano de Situação do Ordenamento do Espaço Marítimo Nacional (PSOEM) – 2019 Continental, Extended Continental Shelf and Madeira subdivisions approved in 2019 and work is in progress for the Azores subdivision |
| MSP plans URL | <i>Plan consultation address</i> | https://www.psoem.pt/ |
| Number of marine plans | <i>Number of plans drawn up by the State</i> | 3 marine plan areas : Portugal , Madeira et The Azores |
| Covering | <i>Maritime area covered by the national plan</i> | <ul style="list-style-type: none"> • Portugal : Continent maritime area and the extended continental shelf • Madeira and Azores : their own EEZ |
| MSP Geoportal | <i>Name of the national geoportal dedicated to MSP</i> | Ordenamento do Espaço Marítimo Nacional – Plano de situação |
| Geoportal URL | <i>Address of the national geoportal</i> | https://webgis.dgrm.mm.gov.pt/arcgis/apps/webappviewer/index.html?id=15c32cf0500c43148f97270db0c1f584 (PT) ; https://webgis.dgrm.mm.gov.pt/arcgis/apps/webappviewer/index.html?id=102537ae49554da99ba0141e7cc60b52 (EN) |
| Access to spatial plan | <i>Means of access to the plan</i> | No |
| Access to plan boundaries | <i>Means of access to plan boundaries</i> | No |
| Access to data evidence (input) | <i>Means of access to the data used to draw up the plans</i> | Access in visualisation only |
| Web services | <i>Is there a MSP data web service harvestable by the Shom SDI?</i> | Disseminate by ESRI ArcGIS REST API - Difficulties to find the OGC web services url. - Some data is accessible in WMS / WFS but it is not the majority. Some data are reserved and not belonging to DGRM. The data, which may be of vector and / or raster origin, is not accessed, but a representation in image format of the data. When there are accessible there is a web service per dataset therefore difficulty in knowing what data is accessible in WMS. They must be consulted one by one. Example: https://webgis.dgrm.mm.gov.pt/arcgis/services/GT_AMP/GT_AMP_Fractura_Hayes_e_Kings_Trough/MapServer/WmsServer?request=GetCapabilities&Version=1.3.0&service=wms |

| | | |
|-------------------------|---|---|
| Metadata | <i>Is there a MSP metadata catalogue harvestable by the Shom SDI?</i> | <p>No metadata catalogue harvestable. There is no MSP specific catalogue. Some Metadata can be found in www.snimar.pt . SNIMar is the marine data branch of the National Geographic Information System (SNIG), Access to metadata only by web page - A small part accessible in ESRI ArcGIS REST API service Example: https://webgis.dgrm.mm.gov.pt/arcgis/rest/services/GT_AMP/GT_AMP_Fractura_Hayas_e_Kings_Trough/MapServer</p> |
| National sources | <i>National sources used for populating the SIMAtlantic portal</i> | <p>Direção Geral de Recursos Naturais, Segurança e Serviços Marítimos (DGRM) – Instituto Hidrografico (IH) – Instituto da Conservação da Natureza e das Florestas (ICNF) – Instituto Portugues do Mar e da Atmosfera (IPMA) – Agencia portuguesa do Ambiente (APA) – Direção Geral do Territorio (DGT)</p> |



QUESTIONS

Portugal MSP process table

The main information related to MSP in Portugal used to develop the SIMAtlantic portal content are brought together in the table "Portugal MSP process". Is this information correct?

Some changes were made

SIMAtlantic data portal

1. Are the sources of the data related to Portugal on the SIMAtlantic portal, the one used to establish the national MSP plans?

Yes

2. Are there other sources for accessing data in web services and their metadata?

2.a **Geoportal Mar Português:**

<https://webgis.dgrm.mm.gov.pt/portal/apps/webappviewer/index.html?id=df8accb510bc4f33963d9b03bf3674b8>

2.b **Tematic and Nacional Metadata Catalogues:**

SNIMar:

<http://snimar.dgrm.mm.gov.pt/>

<http://geoportal.snimar.pt/>

National Geographic Information System (SNIG): <https://snig.dgterritorio.gov.pt/>

3. Are relevant layers missing? If so, which?

No

4. Are there web services that would allow us to publish them on the SIMAtlantic data portal?

Yes, for those where the broadcaster is also the owner

5. Do additional relevant datasets to be shared with the other countries of SIMAtlantic project exist, in particular dealing with transnational issues?

No

About the Ordenamento do Espaço Marítimo Nacional – Plano de situação (PSOEM)

1. In general, can you explain how the publication of data on this portal works?
The data are prepared on a shared departmental geodatabase using **ArcMap**. Then, They are published in web services
Web services (WMS or ESRI services) from other institutions are also used.
Then, a WebApp (ArcGis Server) has been prepared with all these webservices.
2. Is the data architecture based on the consumption of web services or is the data stored in the database?
The data architecture of the geoportal is based on the consumption of web services.
Main data are stored in a local geodatabase
3. If you use web services, do you harvest web services or just consumption? Can you explain your choice?
The web services from other national institutions are used only with their authorization.
4. Very few layers are attached to a description sheet. Having not found other metadata catalogue for this data, very few metadata are available for Portuguese data. Do you know why few metadata files are available?
Many national and marine metadata are available in official Metadata Catalogues:
SNIMar:
<http://snimar.dgrm.mm.gov.pt/>
<http://geoportal.snimar.pt/>

National Geographic Information System (SNIG): <https://snig.dgterritorio.gov.pt/>
5. The description sheets, when they exist, refer to proprietary server software (ArcGIS). This protocol often involves interoperability problems, including with the Spatial Data Infrastructure set up in SIMAtlantic project (Geoserver and Geonetwork). What interest do you see to using this technology? Is it possible to produce also this information with Geoserver web services for example?
None. No.
(ArcGis protocol (Shapefiles and ArcGisMapServer and ArcGisFeatureServer) can be also used with QGIS, with no interoperability problems, for example)
6. An OGC¹ standard web service exists, allowing the publication of the information on SIMAtlantic portal, but for only a small part of the data. Do you intend to increase the share of data provided in OGC?

¹ <https://www.opengeospatial.org/standards>

Yes (WMS and WFS)

7. On the geoportal, some layers are checked by default. Does this mean that they are priority for MSP? « ITP » is mentioned as source for some layers, for example Surf dataset. What is the meaning of this acronym and what is the URL link to their website?

No, they are not priority.

The acronym are listed on the documents (www.psoem.pt)

Turism of Portugal, Public Institute <http://www.turismodeportugal.pt/>

8. Can the contact details of a GIS expert be provided to Shom to inform us about the Portuguese data evidence for MSP?

Yes

9. Currently, the data portal publishes the data evidences used to establish the plans. Is it planned that the data portal is enriched by additional data related to the MSP plans and their content (regulations, objectives, ...)

No. There will not be an enriched data but some layers can be updated (for example if a new MPA is created)

SIMAtlantic case studies

The case study n°3 of SIMAtlantic project focuses on the « transboundary Impact Assessment » and is managed by the IEO, UAV and DGRM. The data portal could give visibility to this case study through a predefined map. Are the limits of the case study geographic area defined and available?

Not in PSOEM Geoportal but in Geoportal "Mar Português"

CONTACT

Shom

French hydrographic office
Geomatics Department

Maritime spatial planning office

pem@shom.fr

Project Manager
Dominique CARVAL
Tel: +33 (0)2 56 31 23 68
dominique.carval@shom.fr



SIMAtlantic Data Dissemination Manager
Magali ABJEAN
Tel: +33 (0)2 56 31 26 35
magali.abjean@shom.fr

FACTSHEET - SPAIN

Supporting Implementation of Maritime
Spatial Planning
In the Atlantic region



WP.3 – Theme 3: Data use and sharing



European Commission
Directorate-General for Maritime Affairs and Fisheries



INTRODUCTION

A factsheet related to data sharing for MSP is established regarding each country of SIMAtlantic project. It brings together information relating to MSP and addresses some technical questions relating to the operation of the national geoportal, the technical choices, the available sources, the data accessibility ...

This content is used to feed the information disseminated on the SIMAtlantic data portal (simatlantic.mspdata.eu), through different means: geodata, preconfigured maps, dashboard and associated web pages.

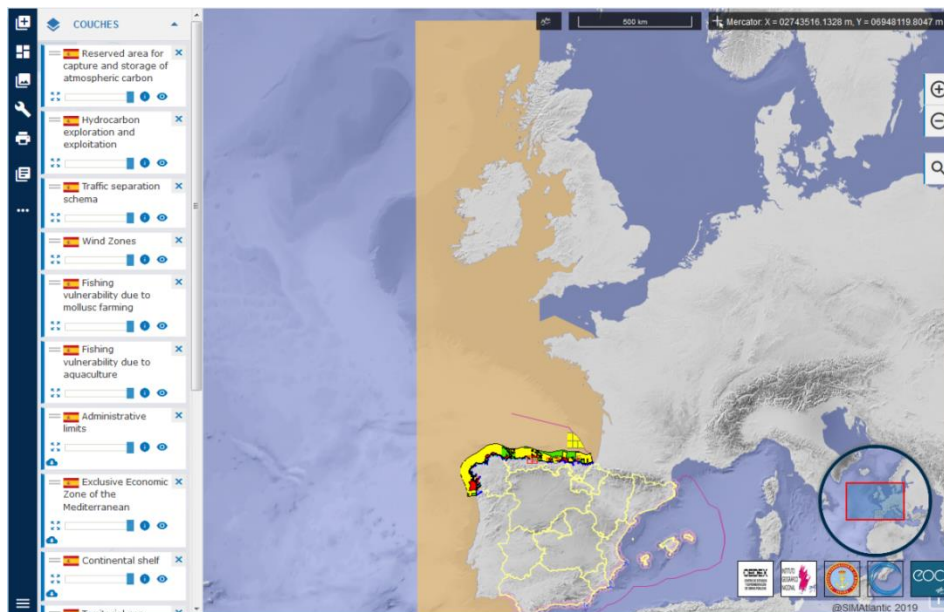
SIMATLANTIC DATA PORTAL

The SIMAtlantic data portal aims to ease the access and enable sharing data relevant for the MSP relating to countries of the SIMAtlantic project (Portugal, Spain, France, Ireland, England and Northern Ireland). In particular it is used to bring together the datasets related to the national marine spatial plans.

The SIMAtlantic data catalogue intends to cover the all themes relating to MSP including maritime and terrestrial boundaries, regulatory limits, environmental, physical and biological characteristics, uses and activities, and national plans

A major quality assurance requirement that must be met to enable publication on the SIMAtlantic data portal is the availability of metadata record and that data is available in web services.

The data sets related to Spain are available for consultation at simatlantic.mspdata.eu. The data catalogue groups the data by themes categories, and then by country.



SPAIN MSP PROCESS

| | | |
|--|---|---|
| MSP Directive transcription | <i>National legislative document which transcribes the MSP Directive 2014/89 / EU</i> | Royal Decree No 363/2017 : Royal Decree on maritime spatial planning |
| National policies | <i>Other national legislative documents in force for the MSP</i> | The Spanish Law on the Protection of the Marine Environment 41/2010 |
| Competent authority | <i>Competent authority in charge of MSP at national level</i> | Ministry of Ecological Transition and Demographic Challenge (MITERD) responsible for the coast, the marine environment and the biodiversity |
| Delegated authority | <i>Delegated authority to implement MSP</i> | An Interministerial Commission on Marine Strategies (2012) Maritime and coastal skills are shared between central and regional governments |
| National MSP plans | <i>Name of the MSP plan</i> | Planes de Ordenación del Espacio Marítimo (MSP) |
| MSP plans URL | <i>Plan consultation address</i> | https://www.miteco.gob.es/es/costas/temas/proteccion-medio-marino/ordenacion-del-espacio-maritimo/default.aspx |
| Number of marine plans | <i>Number of plans drawn up by the State</i> | 5 marine plan areas : one for each Spanish marine subdivisions <ul style="list-style-type: none"> • Noratlantica • Sudatlantica • Levantino-balea • Estrecho y alboran • Canaria |
| Covering | <i>Maritime area covered by the national plan</i> | The Law No 41/2010 regulates maritime areas under the "maritime-terrestrial public domain", which includes territorial waters and natural resources of the economic zone and continental shelf. It includes coastal waters (to the extent not covered by Water Framework Directive; the port waters are not included) |
| MSP Geoportal | <i>Name of the national geoportal dedicated to MSP</i> | Not yet |
| Geoportal URL | <i>Address of the national geoportal</i> | / |
| Access to spatial plan | <i>Means of access to the plan</i> | At the website : https://sig.mapama.gob.es/geoportal/ |
| Access to data evidence (input) | <i>Means of access to the data used to draw up the plans</i> | No yet |
| Web services | <i>Is there a MSP data web service</i> | Not yet |

| | | |
|-------------------------|--|--|
| Metadata | <i>harvestable by the Shom SDI?</i> <i>Is there a MSP metadata catalogue harvestable by the Shom SDI?</i> | Not yet |
| National sources | <i>National sources used for populating the SIMAtlantic portal</i> | Ministerio para la Transición Ecológica y Reto Demográfico (MTERD) -Instituto Español de Oceanografía (IEO) – Centro de Estudios y Experimentación de Obras Públicas (CEDEX) – Instituto Hidrográfico de la Marina (IHM) - Ministerio de Agricultura, Pesca, y Alimentación (MAPA) |



QUESTIONS

Spain MSP process table

The main information related to MSP in Spain used to develop the SIMAtlantic portal content are brought together in the table "Spain MSP process". Is this information correct?

Yes it is correct

Data related to Spain, SIMAtlantic data portal

1. Are the sources of the data related to Spain on the SIMAtlantic portal, the one used to establish the national MSP plans?

Yes they are, partially. Important additional information can be the following:

For maritime boundaries: The geographical scope of the five MSP plans in Spain can be consulted in the WMS server:

<http://wms.mapama.es/sig/Costas/EstrategiasMarinas/DDMM/wms.aspx>

The five marine subdivisions can be seen ("demarcaciones marinas"). It is still in process to remove from this geographical scope, the polygons corresponding marine waters in ports.

Marine protected areas and Natura 2000 areas:

<http://wms.mapama.es/sig/Biodiversidad/ENP/wms.aspx>

<http://wms.mapama.es/sig/Biodiversidad/RedNatura/wms.aspx>

Other relevant information in the Geoportal of MITERD:

<https://sig.mapama.gob.es/geoportal/>

2. Are there other sources for accessing data in web services and their metadata?

Yes : <http://barretosm.md.ieo.es/arcgis/rest/services/MSFD>

3. Are relevant layers missing? If so, which?

No, there are not. Most of the work will be completed by beginning next year

4. Are there web services that would allow us to publish them on the SIMAtlantic data portal?

Not yet, it plans to have them ready next spring 2021

5. Do additional relevant datasets to be shared with the other countries of SIMNORAT project exist, in particular dealing with transnational issues?

According to the health emergency situation, by spring 2021 Spain will circulate the plans to our neighbouring countries and communicate them our intention to participate in the official transboundary consultations.

SIMAtlantic case studies

The case study n°3 of SIMAtlantic project focuses on the « transboundary Impact Assessment” and is managed by the IEO, UAV and DGRM.

Has a geographic area been defined for this case study? Is it available in web service or in shape, in order to be displayed on SIMAtlantic data portal?

An initial proposal was sent from Portugal in the transboundary area.

According recommendation from MITERD (CA in Spain) and to be coherent with the Portuguese area extension and the global activities carry out in Spanish area, an agreement has been reached to extend the area until Finisterre cause the activities characteristics and environment conditions are common in the Rías Baixas (Sp).

The inner limit will correspond to the straight lines (not included inner waters under DMA in Sp and Pt) and agree to MSP competences in Pt and Sp. The outer limit will be defined according a marine region (bathymetry or distance from the coast), but it just will be the limit to consider activities not their impact.

The case study area layer will be send for AUVR team to the project coordinator to upload in the SIMAtlantic geoportal.

About the Spanish integrated MSP process

1. During the MSP projects SIMNORAT and SIMWESTMED, IEO and CEDEX have created specific web services to disseminate some Spanish data used to establish the national plans. They were created only for the needs and duration of the projects from a collection of stored data so they are not maintained.

At the moment, what would be the source to share Spanish MSP data in the framework of SIMAtlantic project?

Will there be a solution to share them with the public?

It is planned to develop a geoportal and a web services for sharing the public, it will be ready for the end of 2021

2. According to the « Description of MSP relevant information for Atlantic countries - 2019 » report, produced by CEREMA in SIMAtlantic project, in Spain, several sectoral initiatives (ie : MPAs, Natura 2000 and renewable energies) are under way, but so far no multisectoral MSP initiative has been developed at the national level.

In recent months, has there been progress in the identification of need in terms of MSP data?

What are the priority thematic?

What are the need in production of data and regarding the opening of existing data?

Spain lunched the scoping process for the strategic environmental assessment and the draft documents have been circulated from the Ministry to the concerned authorities and the public, for obtaining their inputs of the plans. Online meetings were also organised for the inter-administrative coordination between the MSP authority and the different departments of the regional administrations. The representatives of local authorities will also be consulted. A work with all of them is in progress on a further spatial analysis compiling the existing and future uses and activities in each of the five Spanish Marine Subdivisions

3. Do you plan to spatialize the plans in a digital format? Do you plan to structure the national

MSP plans? What would be the format(s) in which they would be disseminated?
As at previous answer, it is planned to develop a geoportal and a web services for sharing the public, it will be ready for the end of 2021.

CONTACT

Shom
French hydrographic office
Geomatics Department

Maritime spatial planning office
pem@shom.fr

Project Manager
Dominique CARVAL
Tel: +33 (0)2 56 31 23 68
dominique.carval@shom.fr



SIMAtlantic Data Dissemination Manager
Magali ABJEAN
Tel: +33 (0)2 56 31 26 35
magali.abjean@shom.fr

FACTSHEET - ENGLAND

Supporting Implementation of Maritime
Spatial Planning
In the Atlantic region



WP.3 – Theme 3: Data use and sharing



European Commission
Directorate-General for Maritime Affairs and Fisheries



INTRODUCTION

A factsheet related to data sharing for MSP is established regarding each country of SIMAtlantic project. It brings together information relating to MSP and addresses some technical questions regarding the operation of the national geoportal, the technical choices, the available sources, the data accessibility...

This content is used to feed the information disseminated on the SIMAtlantic data portal (simatlantic.mspdata.eu), through different means: geodata, preconfigured maps, dashboard and associated web pages.

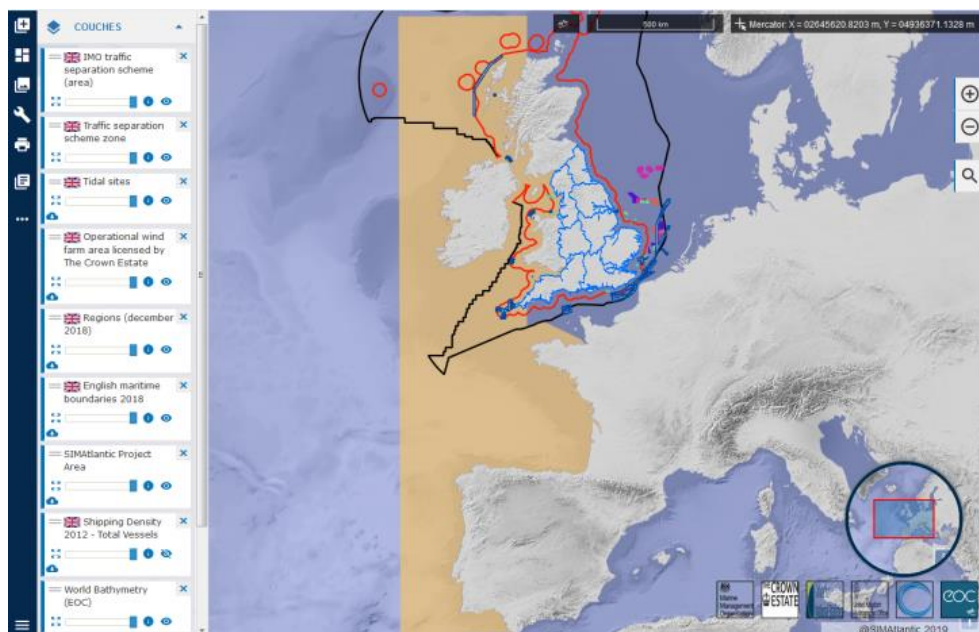
SIMATLANTIC DATA PORTAL

The SIMAtlantic data portal aims to ease the access and enable sharing data relevant for the MSP relating to countries of the SIMAtlantic project (Portugal, Spain, France, Ireland, England and Northern Ireland). In particular it is used to bring together the datasets related to the national marine spatial plans.

The SIMAtlantic data catalogue intends to cover the all themes relating to MSP including maritime and terrestrial boundaries, regulatory limits, environmental, physical and biological characteristics, uses and activities, and national plans.

A major quality assurance requirement that must be met to enable for publication on the SIMAtlantic data portal is the availability of metadata record and that data is available in web services

The data sets related to England are available for consultation at simatlantic.mspdata.eu. The data catalogue groups the data by themes categories, and then by country.



ENGLAND MSP PROCESS

| | | |
|--|---|--|
| MSP Directive transcription | <i>National legislative document which transcribes the MSP Directive 2014/89 / EU</i> | / |
| National policies | <i>Other national legislative documents in force for the MSP</i> | Marine Policy Statement 2011 (MPS) Marine and Coastal Access Act 2009 (MCAA) |
| Competent authority | <i>Competent authority in charge of MSP at national level</i> | The Secretary of State for Environment, Food and Rural Affairs (DEFRA) |
| Delegated authority | <i>Delegated authority to implement MSP</i> | Marine Management Organisation (MMO) |
| National MSP plans | <i>Name of the MSP plan</i> | Marine Planning in England - Maritime plans |
| MSP plans URL | <i>Plan consultation address</i> | https://www.gov.uk/government/collections/marine-planning-in-england |
| Number of marine plans | <i>Number of plans drawn up by the State</i> | 6 marine plan areas: 2 have been completed for the East and South Areas 4 draft marine plans are open for consultations until April 2020 for North East, North West, South East and South West |
| Covering | <i>Maritime area covered by the national plan</i> | British marine waters and the Coastal and Maritime Access Act |
| MSP Geoportal | <i>Name of the national geoportal dedicated to MSP</i> | Marine Planning Evidence |
| Geoportal URL | <i>Address of the national geoportal</i> | https://explore-marine-plans.marineservices.org.uk/ |
| Access to spatial plan | <i>Means of access to the plan</i> | Access in visualisation Access in web services (WMS and WFS) |
| Access to data evidence (input) | <i>Means of access to the data used to draw up the plans</i> | Access in visualisation A small part accessible in web services |
| Web services | <i>Is there a MSP data web service harvestable by the Shom SDI?</i> | Disseminate by ESRI ArcGIS REST API - Some data is accessible in WMS / WFS but it is not the majority. Difficulties to find the OGC web services URL. When there are accessible there is a web service per dataset therefore difficulty in knowing what data is accessible in WMS. They must be consulted one by one. Example : http://mmogis.services.defra.gov.uk/arcgis/rest/services There are difficulties to read the WFS service for the "Marine plan areas" layer |
| Metadata | <i>Is there a MSP metadata catalogue harvestable by the Shom SDI?</i> | No metadata catalogue harvestable Existing catalogue: https://data.gov.uk/search? A small part accessible in catalogue – Incomplete metadata Web page example : https://data.gov.uk/dataset/837a175d-5e3d-44c2-ac85-99a9371069cd/marine-management-organisation-marine-plan-areas-web-mapping-service-wms Or html page : https://ckan.publishing.service.gov.uk/harvest/object/4a2f6c76-c153-4e20-b469- |



| | | |
|-------------------------|--|---|
| National sources | <i>National sources used for populating the SIMAtlantic portal</i> | 04ea23bc0dbc/html Marine Management Organisation (MMO) – UK hydrographic Office (UKHO) – The Crown Estate – Marine Scotland – Office for National Statistics (ONS) |
|-------------------------|--|---|

CONTACT

Shom
French hydrographic office
Geomatics Department

Maritime spatial planning office
pem@shom.fr

Project Manager
Dominique CARVAL
Tel: +33 (0)2 56 31 23 68
dominique.carval@shom.fr



SIMAtlantic Data Dissemination Manager
Magali ABJEAN
Tel: +33 (0)2 56 31 26 35
magali.abjean@shom.fr

FACTSHEET - NORTHERN IRELAND

Supporting Implementation of Maritime
Spatial Planning
In the Atlantic region



WP.3 – Theme 3: Data use and sharing



European Commission
Directorate-General for Maritime Affairs and Fisheries



INTRODUCTION

A factsheet related to data sharing for MSP is established regarding each country of SIMAtlantic project. It brings together information relating to MSP and addresses some technical questions relating to the operation of the national geoportal, the technical choices, the available sources, the data accessibility ...

This content is used to feed the information disseminated on the SIMAtlantic data portal (simatlantic.mspdata.eu), through different means: geodata, preconfigured maps, dashboard and associated web pages.

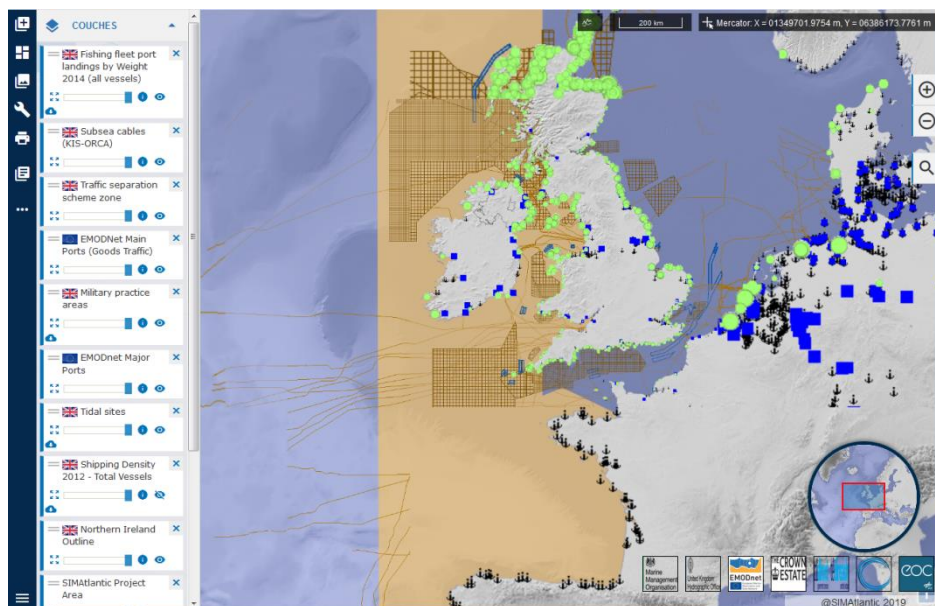
SIMATLANTIC DATA PORTAL

The SIMAtlantic data portal aims to ease the access and enable sharing data relevant for the MSP relating to countries of the SIMAtlantic project (Portugal, Spain, France, Ireland, England and Northern Ireland). In particular it is used to bring together the datasets related to the national marine spatial plans.

The SIMAtlantic data catalogue intends to cover all themes relating to MSP including maritime and terrestrial boundaries, regulatory limits, environmental, physical and biological characteristics, uses and activities, and national plans.

A major quality assurance requirement that must be met to enable publication on the SIMAtlantic data portal is the availability of metadata record and that data is available in web services.

The data related to Northern Ireland are available for consultation at simatlantic.mspdata.eu. The data catalogue groups the data by themes categories, and then by country.



NORTHERN IRELAND MSP PROCESS

| | | |
|--|---|--|
| MSP Directive transcription | <i>National legislative document which transcribes the MSP Directive 2014/89 / EU</i> | / |
| National policies | <i>Other national legislative documents in force for the MSP</i> | Marine and Coastal Access Act 2009 (MCAA) Marine Act (Northern Ireland) 2013 (The Marine Act) |
| Competent authority | <i>Competent authority in charge of MSP at national level</i> | Department of Agriculture, Environment and Rural Affairs (DAERA) |
| Delegated authority | <i>Delegated authority to implement MSP</i> | / |
| National MSP plans | <i>Name of the MSP plan</i> | Marine plan for Northern Ireland draft published for consultation in 2018 and the consultation responses will be published in 2020 |
| MSP plans URL | <i>Plan consultation address</i> | https://www.daera-ni.gov.uk/articles/marine-plan-northern-ireland https://www.daera-ni.gov.uk/sites/default/files/consultations/daera/Marine%20Plan%20for%20NI%20final%2016%2004%2018.PDF |
| Number of marine plans | <i>Number of plans drawn up by the State</i> | 2 marine plan areas : -Inshore region under the Marine Act -Offshore region under the MCAA |
| Covering | <i>Maritime area covered by the national plan</i> | Inshore and offshore regions |
| MSP Geoportal | <i>Name of the national geoportal dedicated to MSP</i> | Northern Ireland Marine Map Viewer |
| Geoportal URL | <i>Address of the national geoportal</i> | https://apps.d.aera-ni.gov.uk/marinemapviewer/ |
| Access to spatial plan | <i>Means of access to the plan</i> | No - visualisation only |
| Access to data evidence (input) | <i>Means of access to the data used to draw up the plans</i> | No - visualisation only |
| Web services | <i>Is there a MPS data web service harvestable by the Shom SDI?</i> | Disseminate by ESRI ArcGIS REST API - Mostly not accessible in WMS / WFS. Difficulties to find the OGC web services url. When there are accessible there is a web service per dataset therefore difficulty in knowing what data is accessible in WMS. They must be consulted one by one. Example: https://data.ogauthority.co.uk/arcgis/services/OGA_Public_WGS84/OGA_Wells_WGS84/MapServer/WMServer?request=GetCapabilities&service=WMS |
| Metadata | <i>Is there a MSP metadata catalogue harvestable by the Shom SDI?</i> | No metadata catalogue harvestable A small part accessible in ESRI ArcGIS REST API service – Incomplete metadata Example : https://apps.d.aera-ni.gov.uk/daeragis/rest/services/Marine/1Boundaries/MapServer/15 |
| National sources | <i>National sources used for populating the SIMAtlantic portal</i> | Marine Management Organisation (MMO) – UK hydrographic Office (UKHO) – The Crown Estate – Marine Scotland – Office for National Statistics (ONS) – Ordnance Survey of Northern Ireland (OSNI) |



QUESTIONS

Northern Ireland MSP process table

The main information related to MSP in Northern Ireland used to develop the SIMAtlantic portal content are brought together in the table "Northern Ireland MSP process". Is this information correct?

Yes

SIMAtlantic data portal

1. Are the sources of the data related to Northern Ireland on the SIMAtlantic portal, the one used to establish the national MSP plans?

Yes

2. Are there other sources for accessing data in web services and their metadata?

The GIS infrastructure is being modernised, with the aim of creating OGC web services by 2021.

3. Are relevant layers missing? If so, which?

No

4. Are there web services that would allow us to publish them on the SIMAtlantic data portal?

No

5. Do additional relevant datasets to be shared with the other countries of SIMNORAT project exist, in particular dealing with transnational issues?


6. In the data catalogue, layers are organised by themes and sub-themes then by country. For the moment, England and Northern Ireland are grouped together. What would be the appropriate classification: option 1) as it is presented now, distinction of England and Northern Ireland, option 2) bring the information in a unique category related to United Kingdom of Great Britain and Northern Ireland.

1) As it is presented now, distinction of England and Northern Ireland.

About the Northern Ireland Marine Map Viewer

7. In general, can you explain how the layer publication on this portal works?

The Marine Map Viewer will be published again in October 2020. Each section of the viewer (Aquaculture, Biodiversity, Surveillance, etc.) will be served by separate layers of map images. They are used because they visualise the data in the form of sub-



layers and the Mapviewer can therefore be divided into subjects. Each of these cartographic image layers is associated with an ArcGIS Pro project, containing a map that is used to define the order of the sub-layers, the symbology, the table schema and the field aliases. The map is then published on the DAERA Enterprise GIS portal with restricted access. Appropriate checks are then carried out before it is made "public".

8. Is the data infrastructure based on web services or on stored data?

The data consist of a mixture of stored data (in Enterprise enabled SDEs) and web services.

The stored data is served to the portal as a copy of the data, rather than a reference which means that the service must be manually updated every time new data is added. Web services are for 3rd party external datasets where available and where symbology is appropriate.

9. In case web services are used, are they harvested or consumed? Can you explain your choice?

Most of the third party data that has been used in the marine planning process is not yet available in the form of web services. Where possible, these services have been used, for example those of the Oil & Gas Authority. Otherwise, data is downloaded and stored in corporate geodatabase and available updates are then searched for.

10. Lots of layers published on the Northern Ireland Marine Map Viewer are not downloadable, for example « Fisheries Restrictions (Zones) » or « Dredging Activity 2005-15 Registered Activity », and some of them have no associated metadata. Do you know why?

Work is underway on the creation of MEDIN Standard metadata for corporate data sets. This task has not yet been completed due to resource issues. An Enterprise GIS Information Hub is also being developed as well as the development of a process for direct publication to Open Data NI.

11. In the Northern Ireland Marine Map Viewer, each layer is linked to a description page in which there is little link to metadata or web services. In case a link to a web service exists, the web service protocol is incompatible with the SIMAtlantic data architecture. Therefore, the metadata catalogue <https://www.opendatani.gov.uk/dataset/>, is used to access to certain metadata record and web service. But very little data displayed on the portal is available in this catalogue. Are these sources correct? Are there other sources to access English data in web services and their metadata?

Yes at present, there is little evidence available Marine Plan evidence data on the Open Data NI Portal. It is not possible to put third party datasets onto the ODNI Portal nor create Web Services for these. As above, the intention is to give corporate datasets MEDIN standard metadata and publish to Open Data NI through the Enterprise GIS Information Hub.

12. In particular, are the MSPD Inshore Marine Plan Extent and the MSPD Offshore

Marine Plan Extent layers available in web services like WMS or WFS? Not yet.
There has been a slight change to legislation that is used to create part of the Marine Plan boundary just this month. Relevant metadata will be created and the layer will be made available hopefully as Open Data, subject to UKHO approval.

13. There are similarities between the organisation of Northern Ireland Marine Map Viewer and the one of Marine Planning Evidence. Have you worked in cooperation for the development of both geoportals?

No

CONTACT

Shom

French hydrographic office
Geomatics Department

Maritime spatial planning office

pem@shom.fr

Project Manager

Dominique CARVAL

Tel: +33 (0)2 56 31 23 68

dominique.carval@shom.fr



SIMAtlantic Data Dissemination Manager

Magali ABJEAN

Tel: +33 (0)2 56 31 26 35

magali.abjean@shom.fr