

Interactive map for maritime uses' distribution and stakes

Julien Dilasser

Cerema

Co-funded by the
European Maritime and Fisheries Fund
of the European Union



Interactive map for maritime uses' distribution and stakes

Julien Dilasser

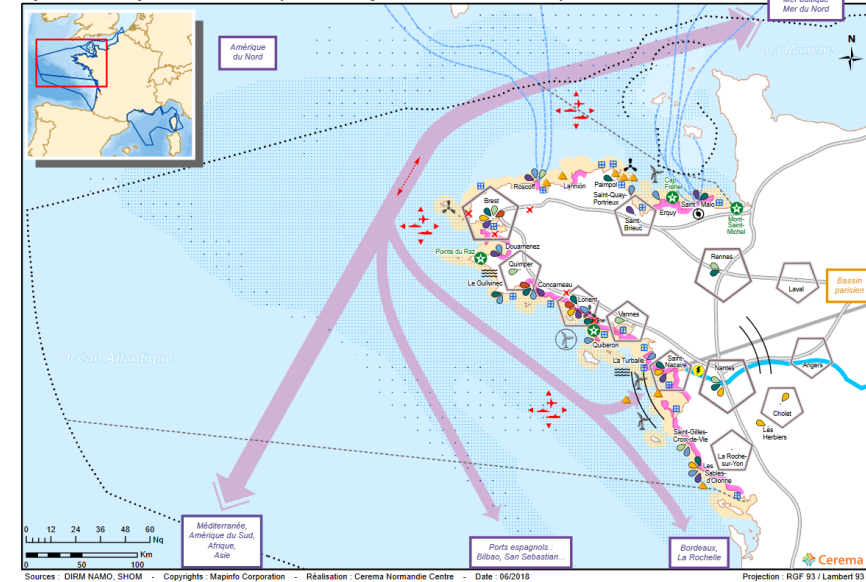


Objectives

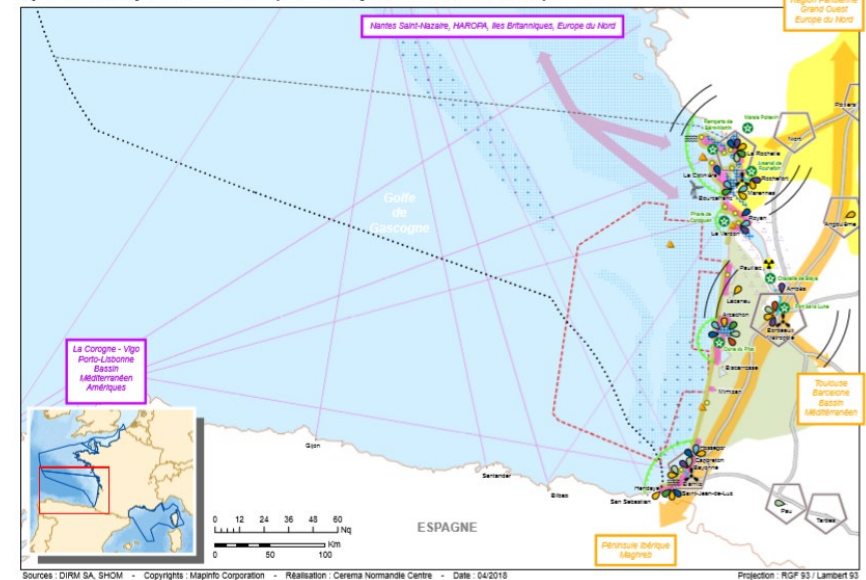
An interactive map in order to link major socio-economic interests underlined in the French MSP process and best available data

- Allow users to benefit from data genealogy
- Highlight cross-border issues
- Highlight the important issues and the main current obstacles to the development of this type of tool

Synthèse des enjeux socio-économiques sur la façade maritime Nord Atlantique - Manche Ouest



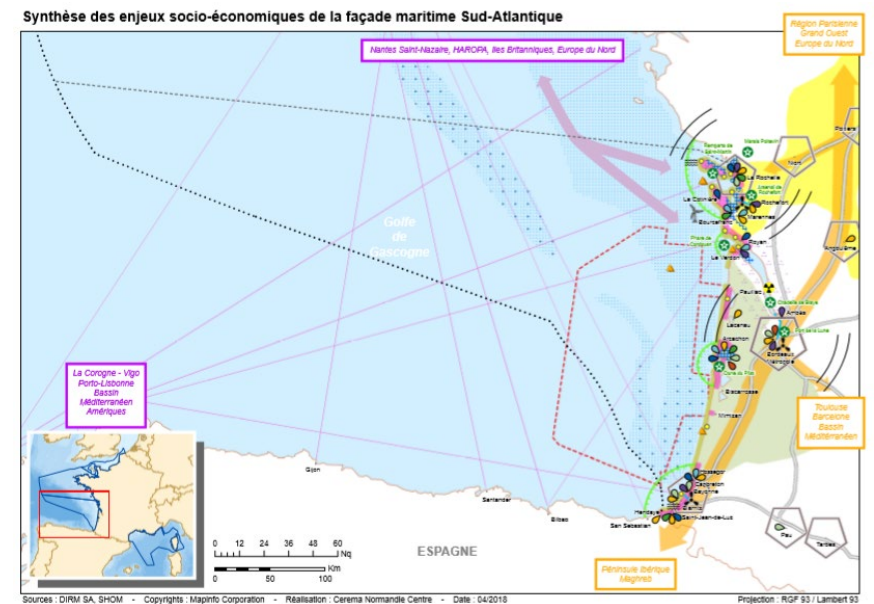
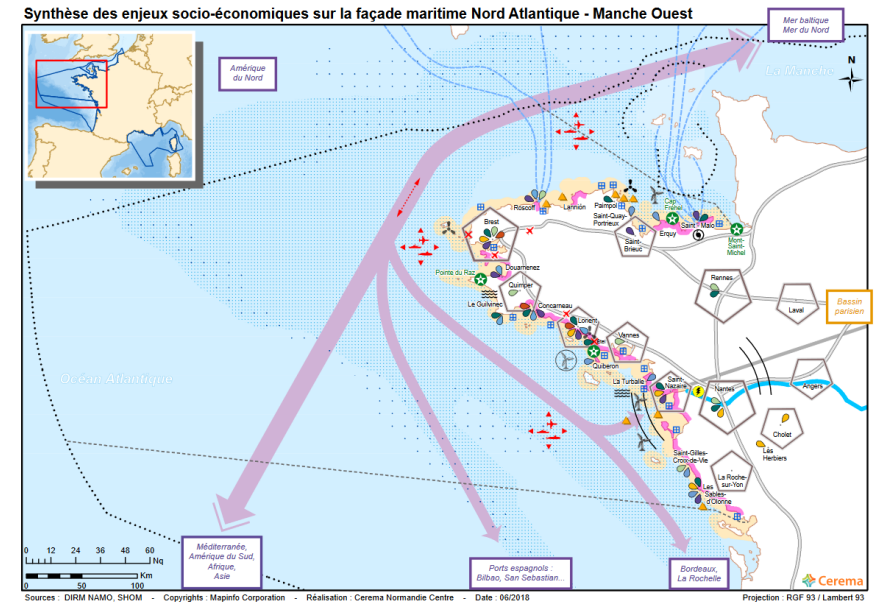
Synthèse des enjeux socio-économiques de la façade maritime Sud-Atlantique



Objectives

Based on the summary maps of socio-economic issues produced as part of the first spatial planning process in France: The Documents Stratégiques de Façade.

- Rely as much as possible on the data collected to produce the summary maps
- Keep the simplified representation of the activities as illustrated in the summary maps
- Update data when possible.



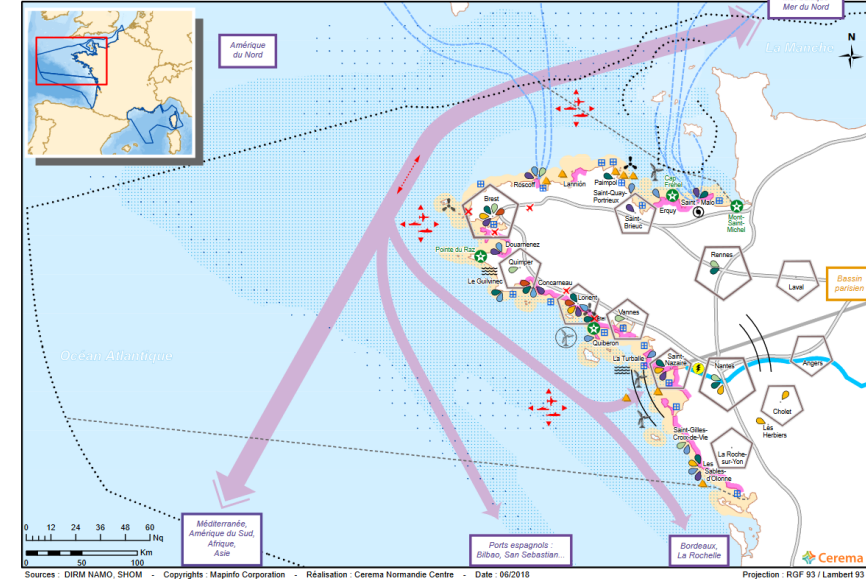
Methodology

Bibliography on the way in which the summary maps of the DSF SA and NAMO were constructed and collection of databases used when possible

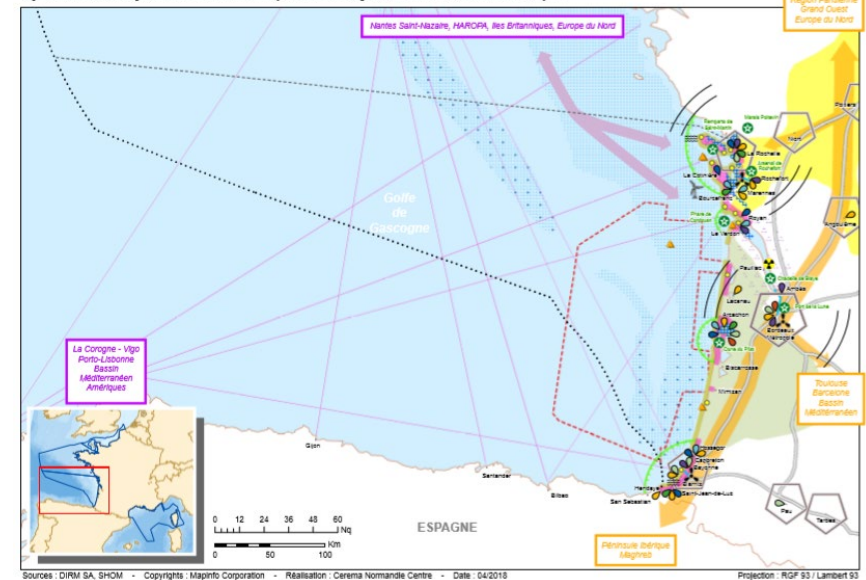
In the event of a lack of initial data:

- Benchmark of the way in which this topic is approached in other exercises of this kind
- Selection of new information based on available data
 - A concern for harmonization of the data displayed between the “SA” and “NAMO” parts.
 - The concern to keep the information consistent with that which has been selected for the summary maps.

Synthèse des enjeux socio-économiques sur la façade maritime Nord Atlantique - Manche Ouest



Synthèse des enjeux socio-économiques de la façade maritime Sud-Atlantique



Methodology

3 inputs

Data in itself:

- Qualitative data and figures for each of the selected activities
- “Raw” data cards for the themes concerned: fishing, shipping, etc.

A framework dedicated to the genealogy of data:

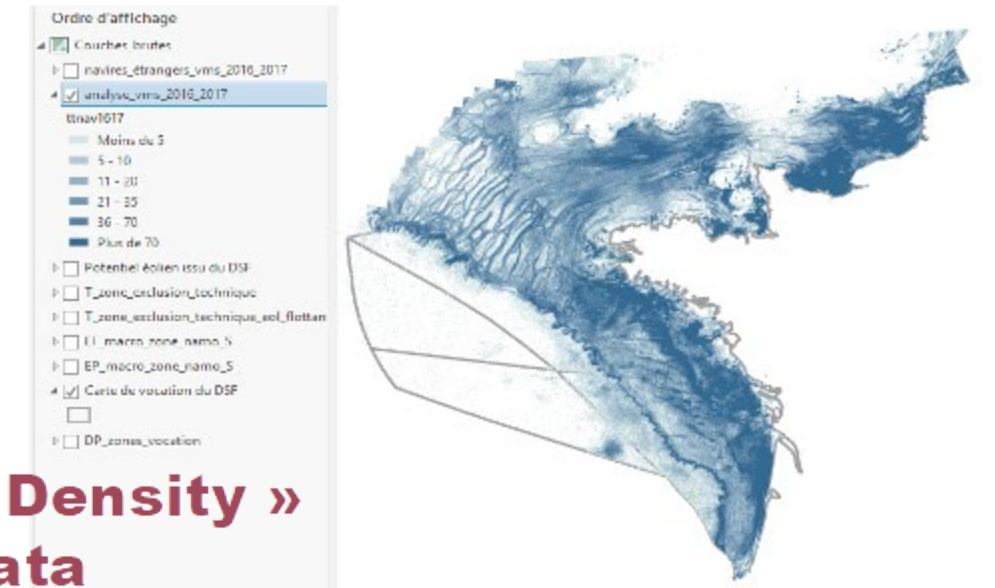
- Link to the websites
- Bibliography

A contextual framework for the future improvement of data aggregation:

- Disclaimer on the state of the data and on the link with the initial summary maps
- Notice for new data if needed



Qualitative data & figures



« Density » data

Main issues and recommendations

Cross-border aspects

- For the selected geographic area, the number of activities affected by cross-border issues appeared limited
- Problem to find and collect data corresponding to those used for the French part for the geographical area concerned.

Some notions that are not shared

- Certain issues represented for the summary maps are based on definitions that are sometimes slightly different depending on the DSF but which can have significant influences on the associated graphic representation . (Marina, area of tourist interes, etc.)

“Internal” choices in the cartographic representation and the data used.

- In the initial summary maps, the simplified representation of the activities based on several types of data was then discussed with certain representatives of sectors leading to modifications whose source and criteria are impossible to trace.

A need for organization between territory and a common national data collection work

