

# Cross-border CEA for the north-western Iberian Peninsula: Methodology and lessons learned

**María da Luz Fernandes**  
**CESAM, Universidade de Aveiro**



# A cross border CEA for the north-western Iberian Peninsula: Methodology and Lessons Learned

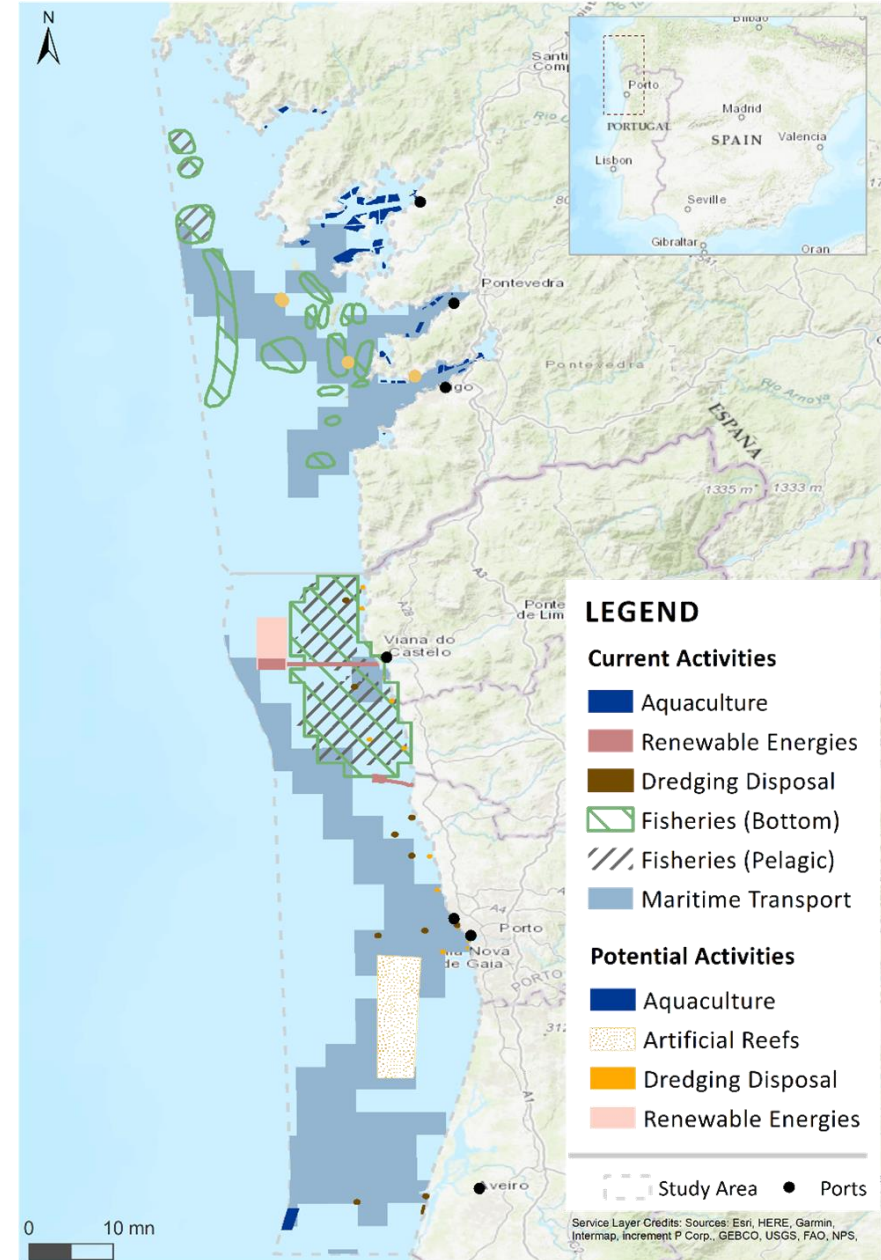
Maria da Luz Fernandes, Adriano Quintela, Daniela Casimiro, Lisa Sousa, Joana Matias, Ana Paula Simão, Fátima L. Alves, Cristina Cervera- Núñez, Mónica Campillos- Llanos, María Gómez- Ballesteros



# CASE STUDY AREA

## AIM

to propose a methodology to assess cumulative impacts/effects (CEA-Cumulative Effects Assessment) at a transboundary scale.



# METHOD

## Identification of baseline conditions

### Spatial distribution of current activities...

- aquaculture
- dredging disposal
- renewable energies
- fishing: bottom and pelagic,
- maritime transport

### ... and future activities

- aquaculture
- dredging disposal
- renewable energies
- artificial reefs and structures



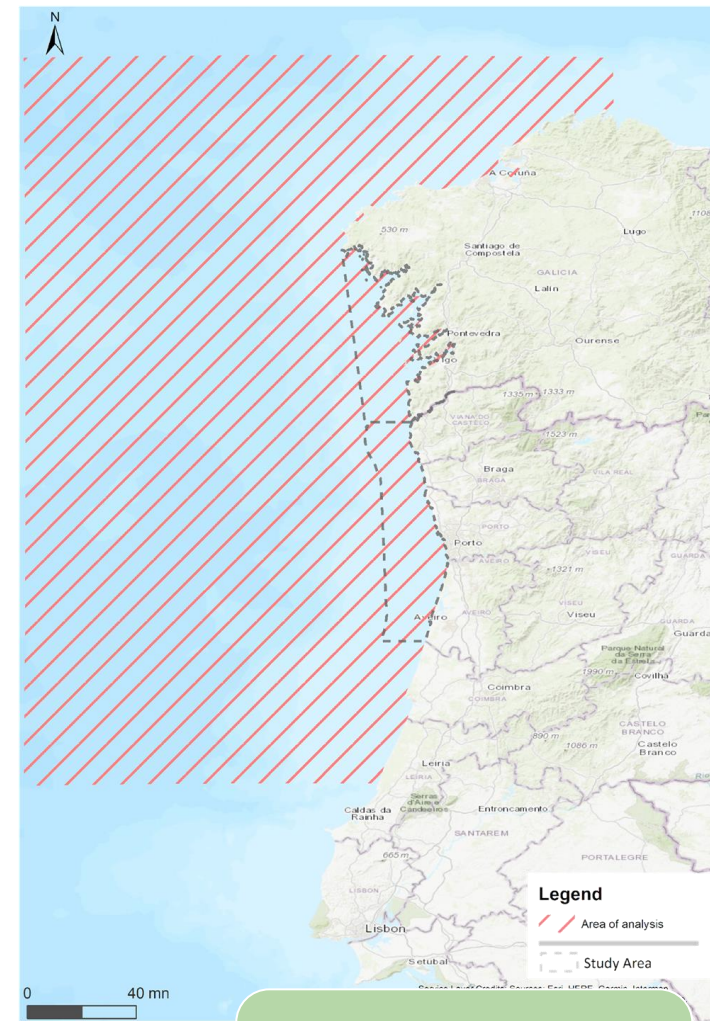
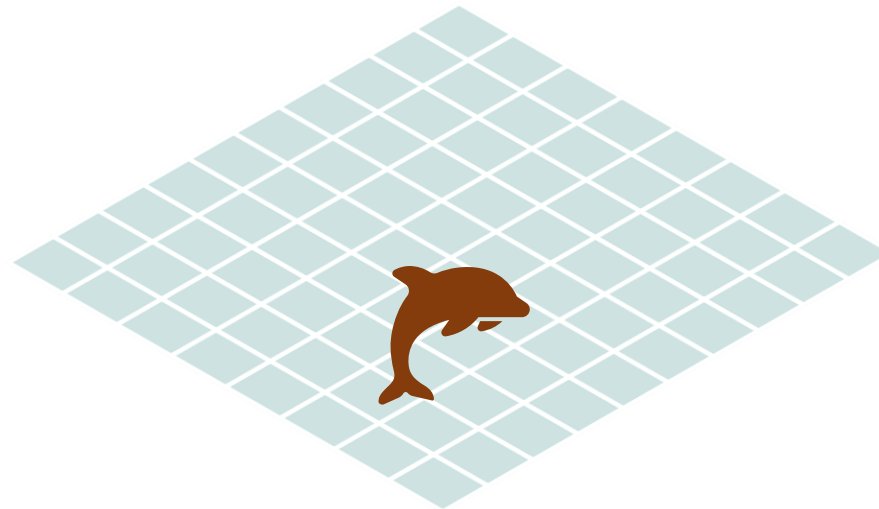


# METHOD

## Identification of baseline conditions

### Spatial distribution of functional groups

- cetaceans
- seabirds
- marine turtles



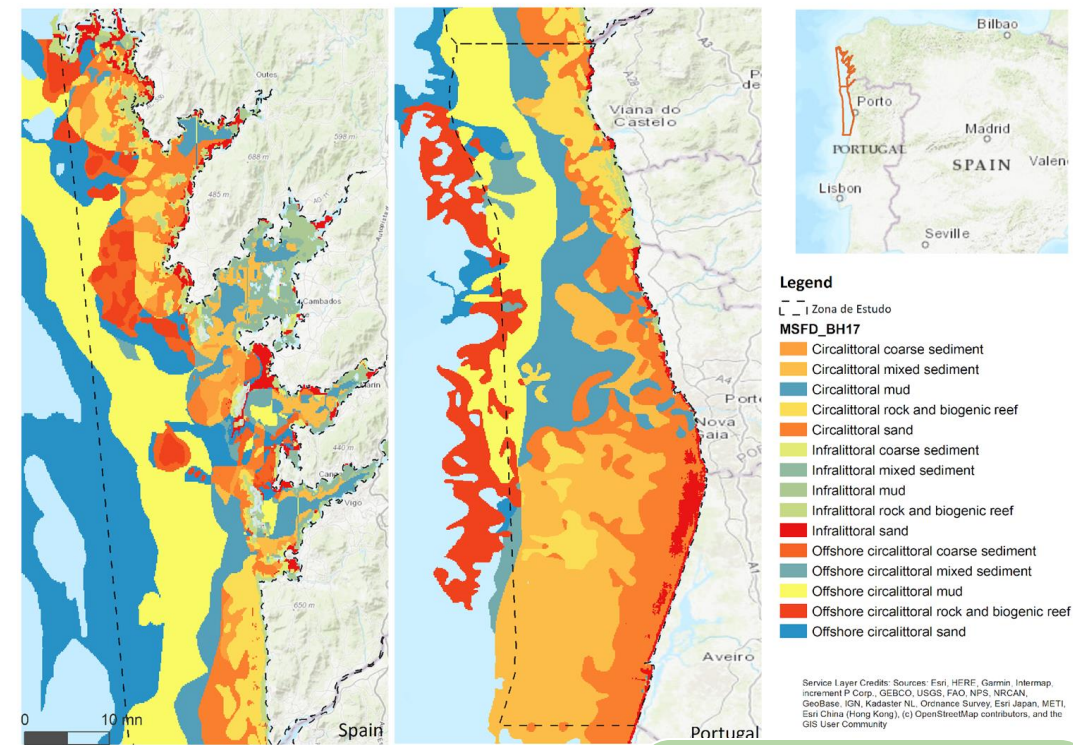
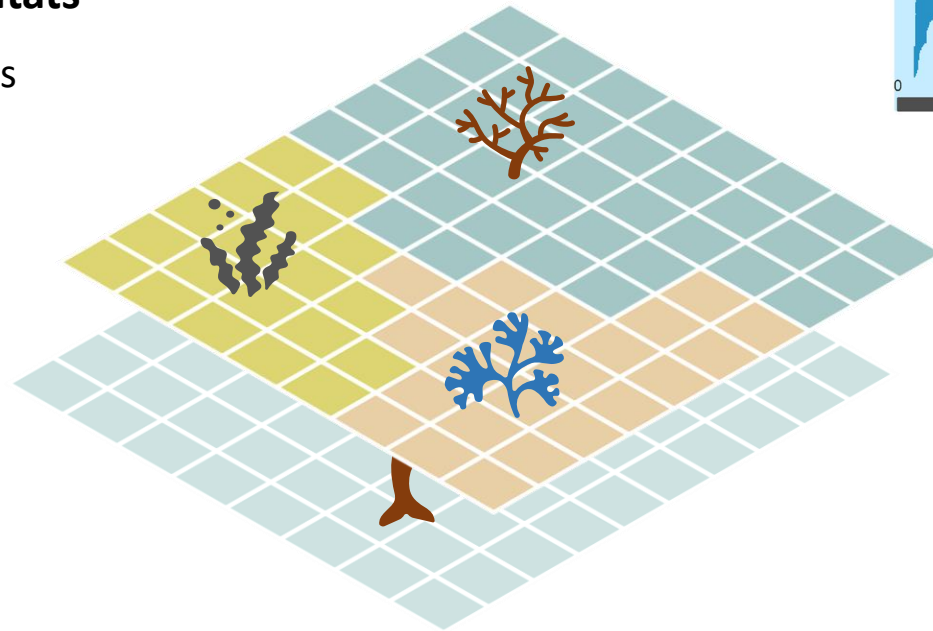
Mapped as presence-absence

# METHOD

## Identification of baseline conditions

### Spatial distribution of habitats

- MSFD Broad Habitats



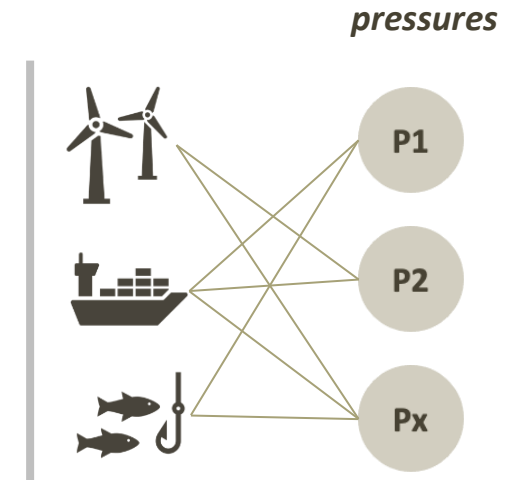
Mapped as presence-absence

# METHOD

## Identification and analysis of pressures

### Pressures (MSFD) caused by activities

- physical
- substances, litter, energy
- biological



# METHOD

## Identification and analysis of pressures

### Pressures (MSFD) caused by activities

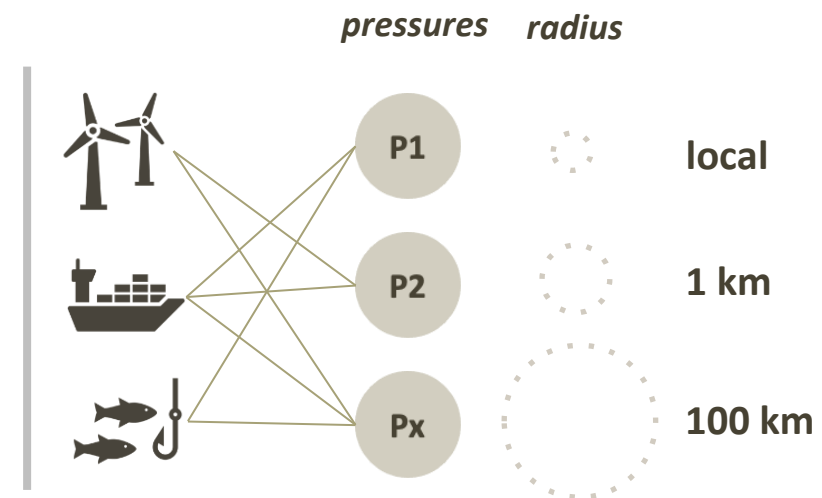
- physical
- substances, litter, energy
- biological

### Influence radius

- local to 100 km



expert judgment





# METHOD

## Identification and analysis of pressures

### Pressures (MSFD) caused by activities

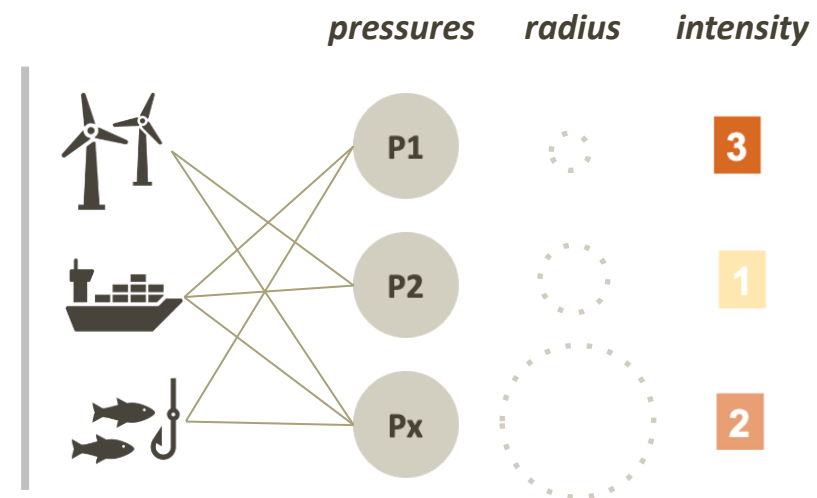
- physical
- substances, litter, energy
- biological

### Influence radius

- local to 100 km

### Intensity of the pressures

- low to high



# METHOD

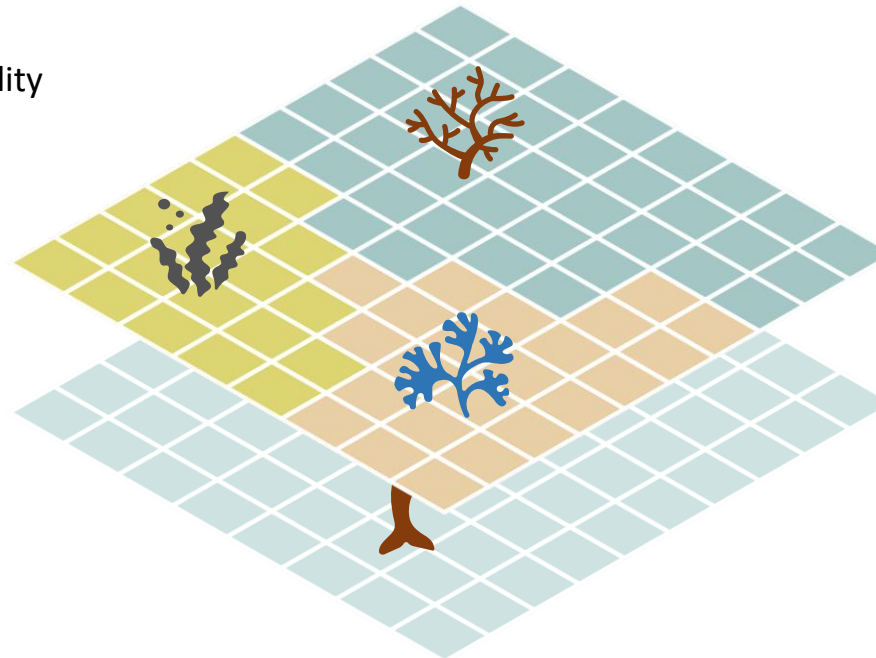
## Analysis of the sensitivity to the pressures

### Sensitivity of individual taxa

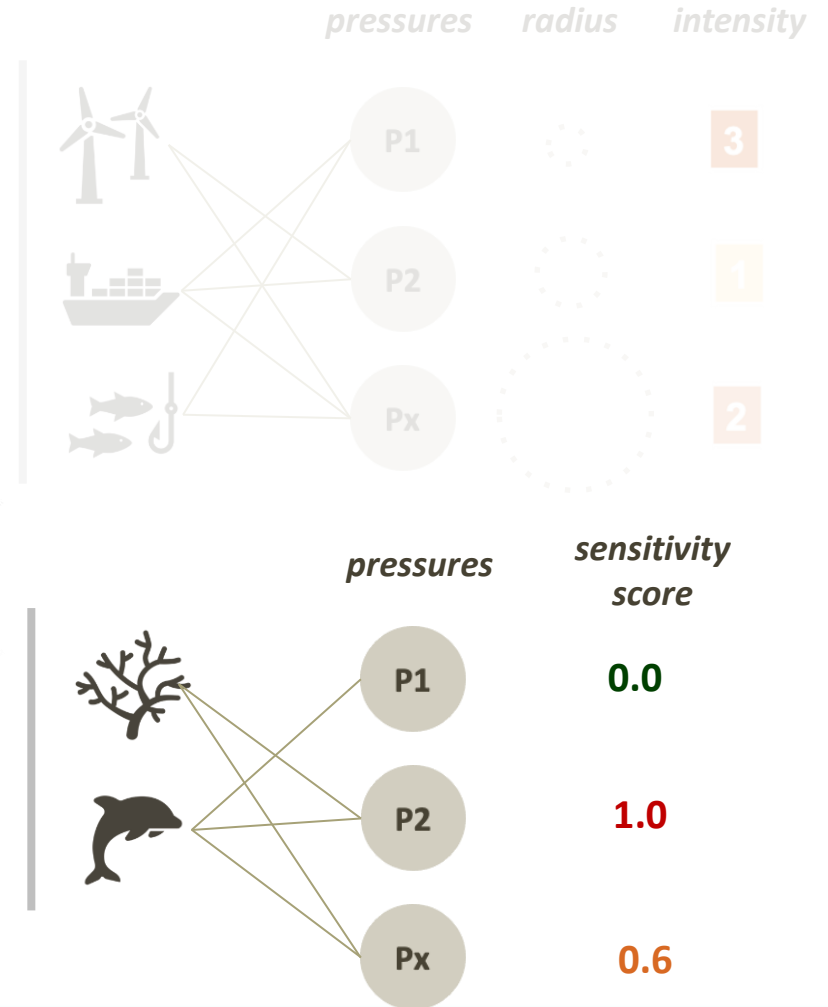
- No response or negligible effect
- Low stress
- Stress with implications for survival or reproduction
- Very severe stress or occasional direct mortality
- Frequent mortality
- Very high mortality

### Sensitivity of habitats

- No change or negligible effect
- Low disturbance
- Disturbance with implications for long-term persistence
- Very severe disturbance or occasional direct destruction/change
- Partial destruction/change
- Permanent destruction/change



expert judgment



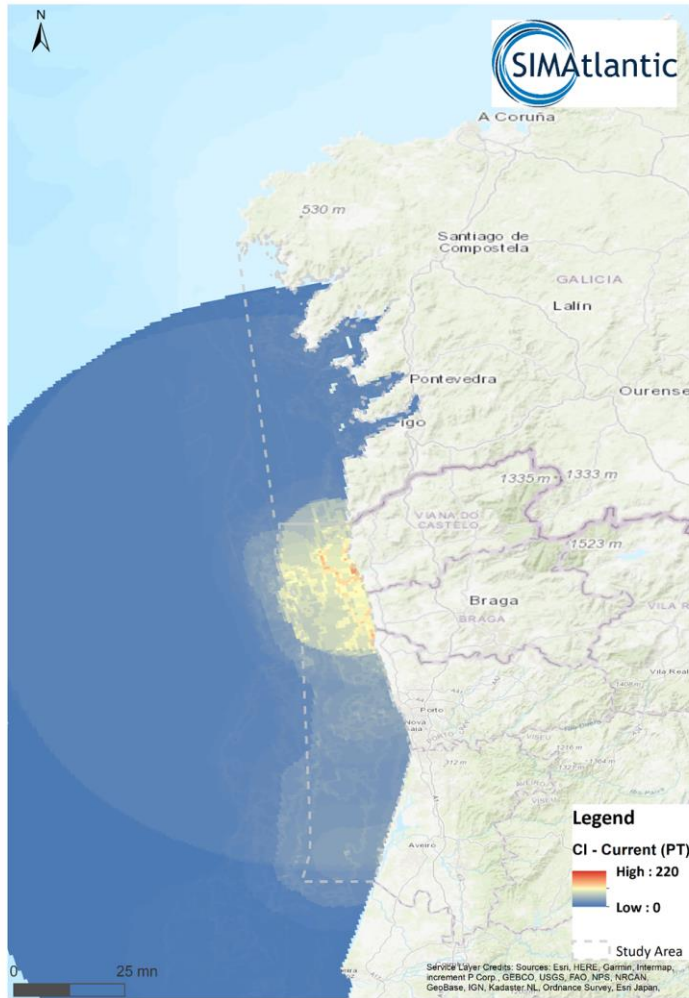
# METHOD

## Cumulative Index (CI)

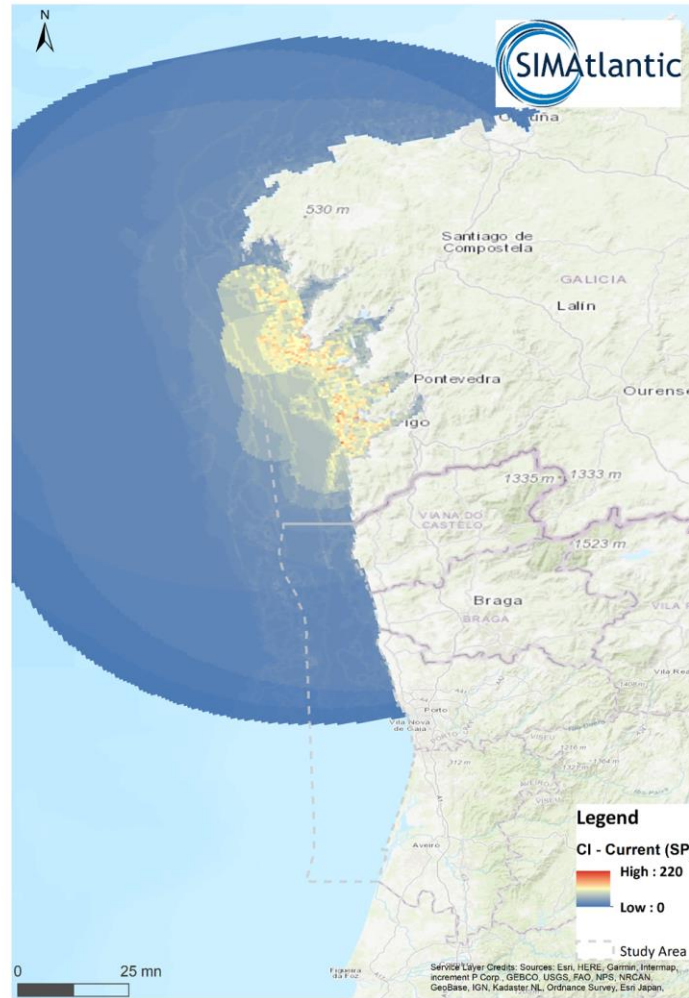


# PRELIMINARY RESULTS

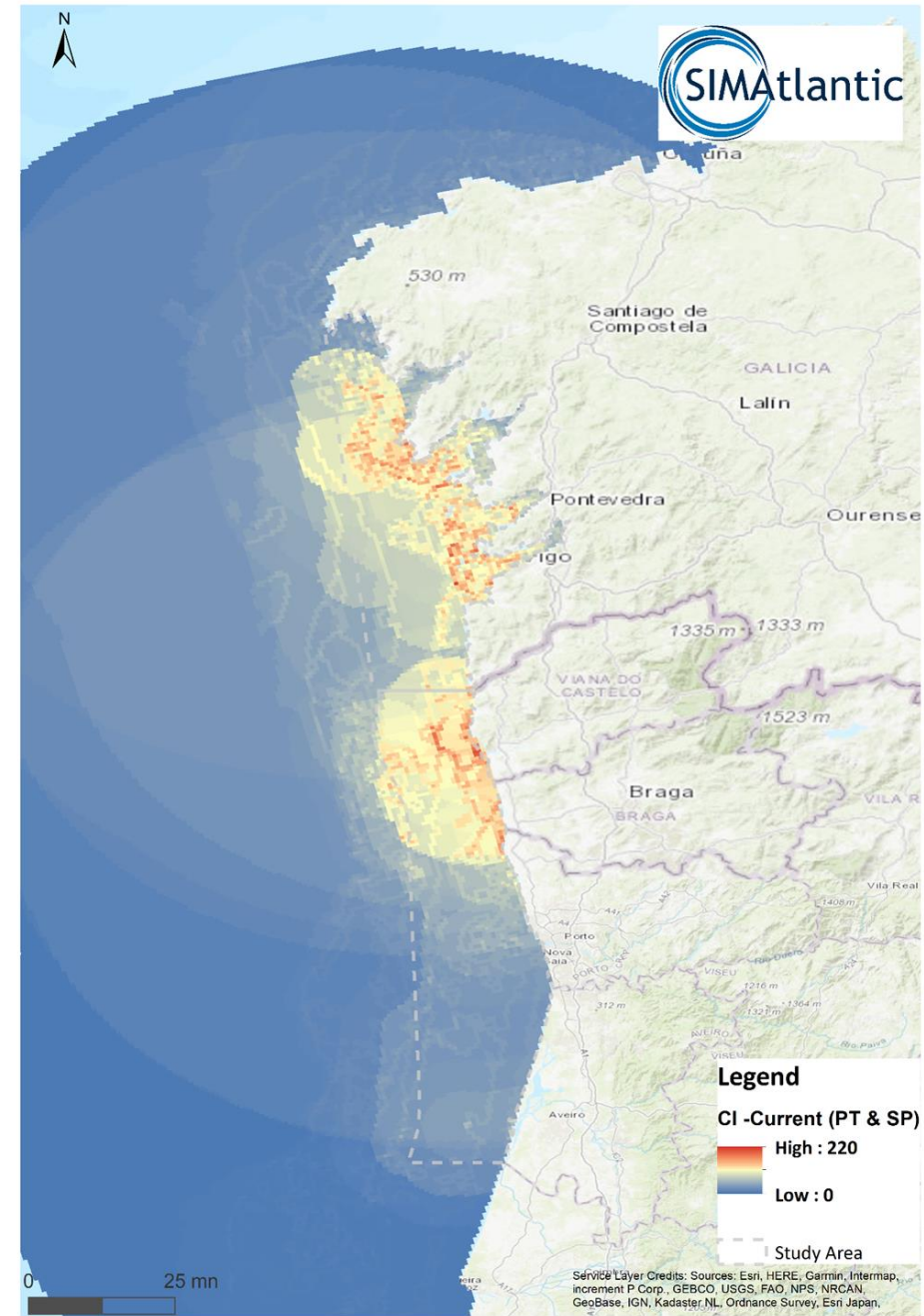
## Current Situation



PORTUGAL



SPAIN

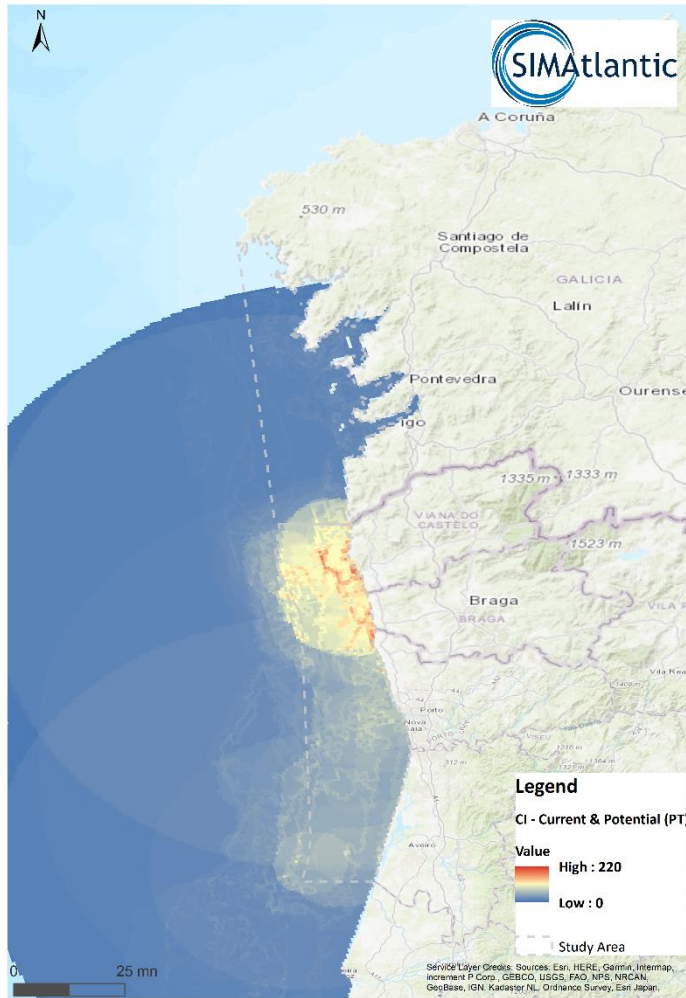


PORTUGAL & SPAIN

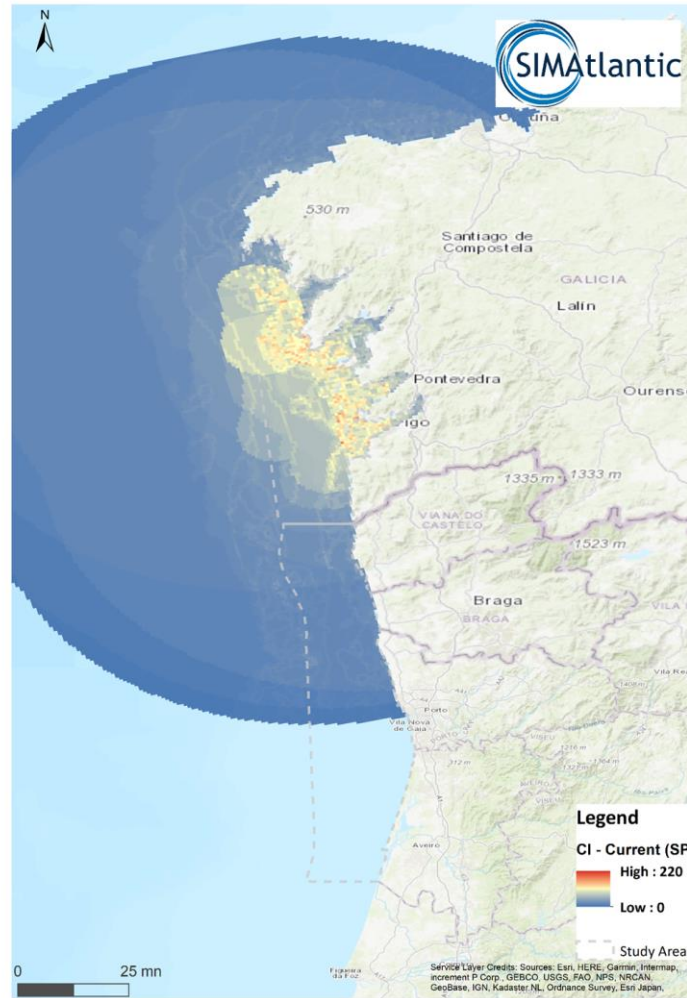


# PRELIMINARY RESULTS

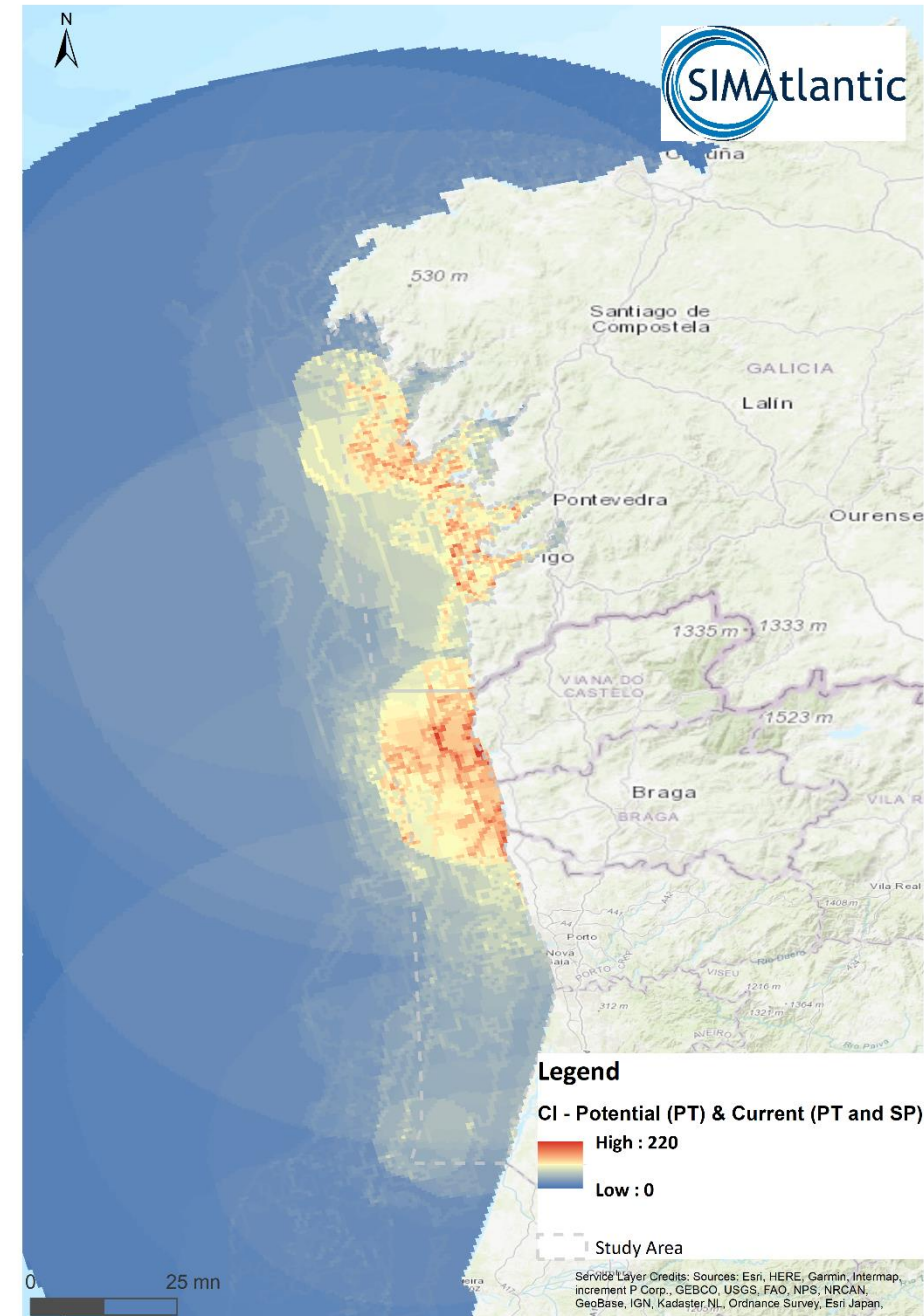
## Current and Potential Situation



PORTUGAL



SPAIN



PORTUGAL & SPAIN

## LIMITATIONS

## LESSONS LEARNT

<b>Spatial data</b>	Marine mammals, seabirds marine turtles distributions  Data sharing	<ul style="list-style-type: none"><li>• Precautionary principle → Homogeneous distribution considered</li><li>• Data sharing protocol</li></ul>
<b>Expert knowledge</b>	Sensitivity and radius	<ul style="list-style-type: none"><li>• Improvement of experts involvement strategy<ul style="list-style-type: none"><li>○ Statistically significant number of participants</li><li>○ Coherent proportion of experts by ecological component</li><li>○ Uncertainty</li><li>○ More concrete definition of habitats and pressures</li><li>○ Clearer connection of pressures and activities</li></ul></li><li>• Precautionary principle</li></ul>
<b>Methodology</b>	Comparable data  Common concepts  Considered activities common for MSP processes in both countries	<ul style="list-style-type: none"><li>• Use of MSFD habitat classification</li><li>• For activities represented as intensity maps, use of “core areas”</li><li>• More activities, including LSI should be included.</li><li>• For potential future activities construction phases need to be considered</li></ul>

***Thank you! ¡Gracias! Merci! Obrigada!***

