

Investigating Land-Sea Interactions in the Irish Sea and beyond

SIMAtlantic Final Conference 15th 2021



Co-funded by
the European Union



Definition of Land-Sea Interactions

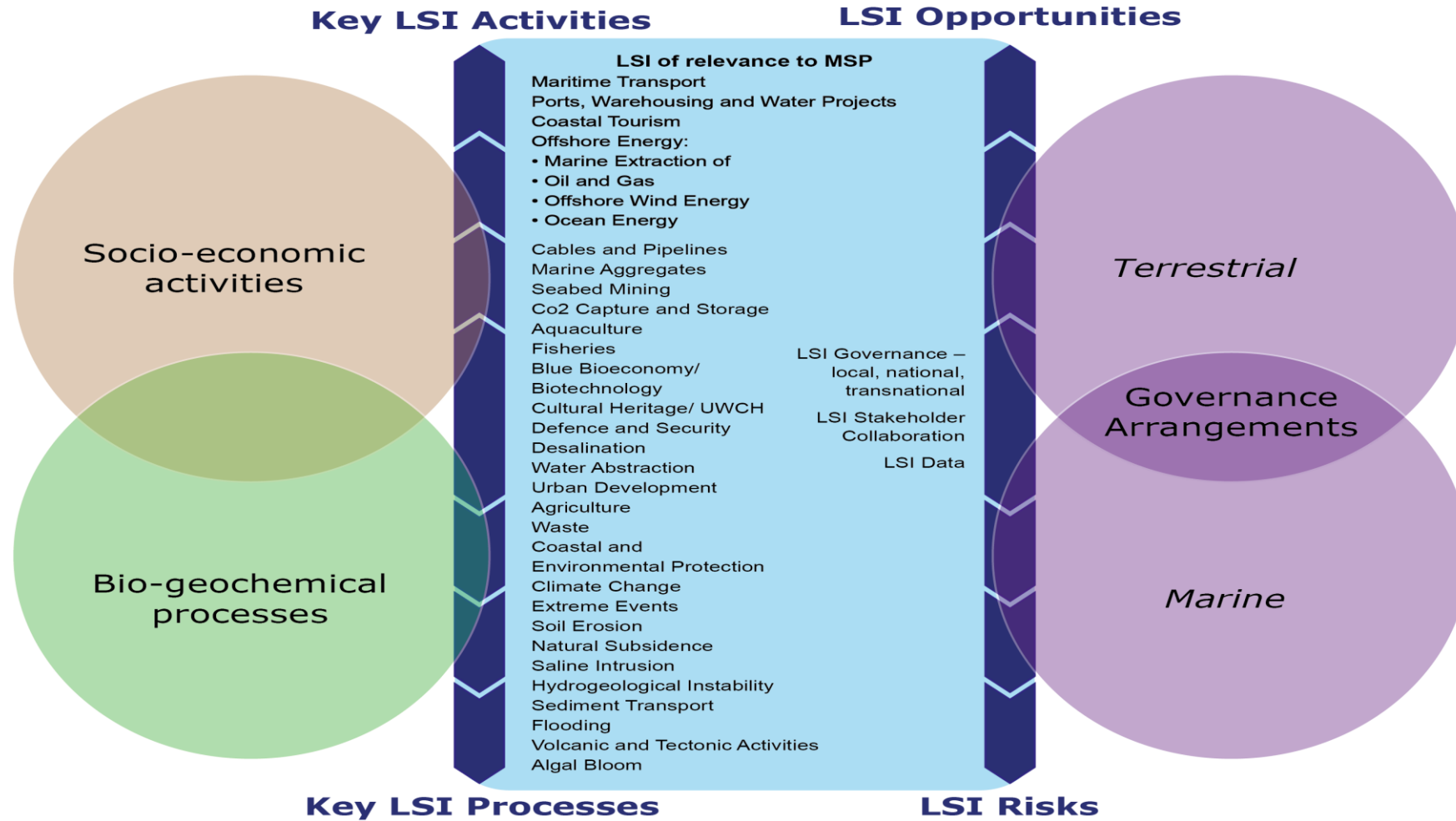
Interactions in which land-based natural phenomena or human activities have an influence or an impact on the marine environment, resources and activities and interactions in which marine natural phenomena or human activities have an influence or an impact on the terrestrial environment, resources and activities. The influence of these phenomena and activities are not considered to be confined by economic, planning or national boundaries.



Co-funded by
the European Union



How to Manage LSI



Source: ESPON 2019



Co-funded by
the European Union

ESPON //

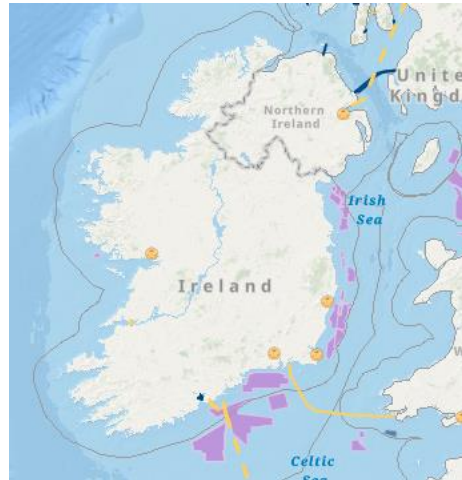


The Irish Sea Pilot

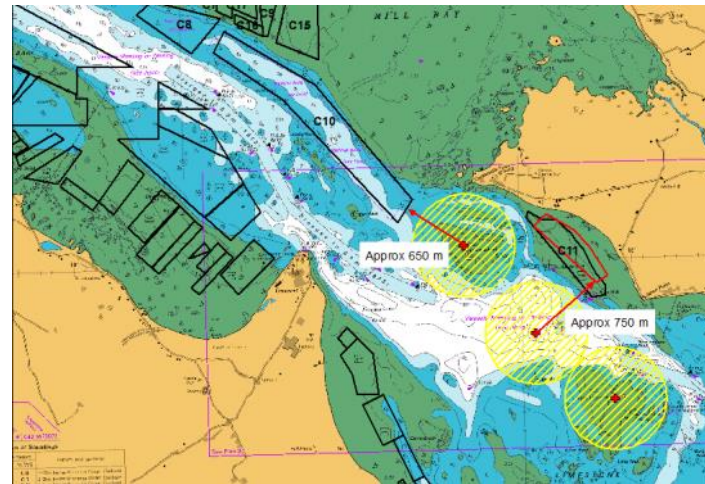
Pilot comprises two case studies:

- Value Chain Analysis: Offshore Wind
- BSWIFT Analysis: Shellfish Aquaculture & Climate Change

Both case studies investigate LSI from a transboundary perspective



Source: AFBI



Source: 4COffshore

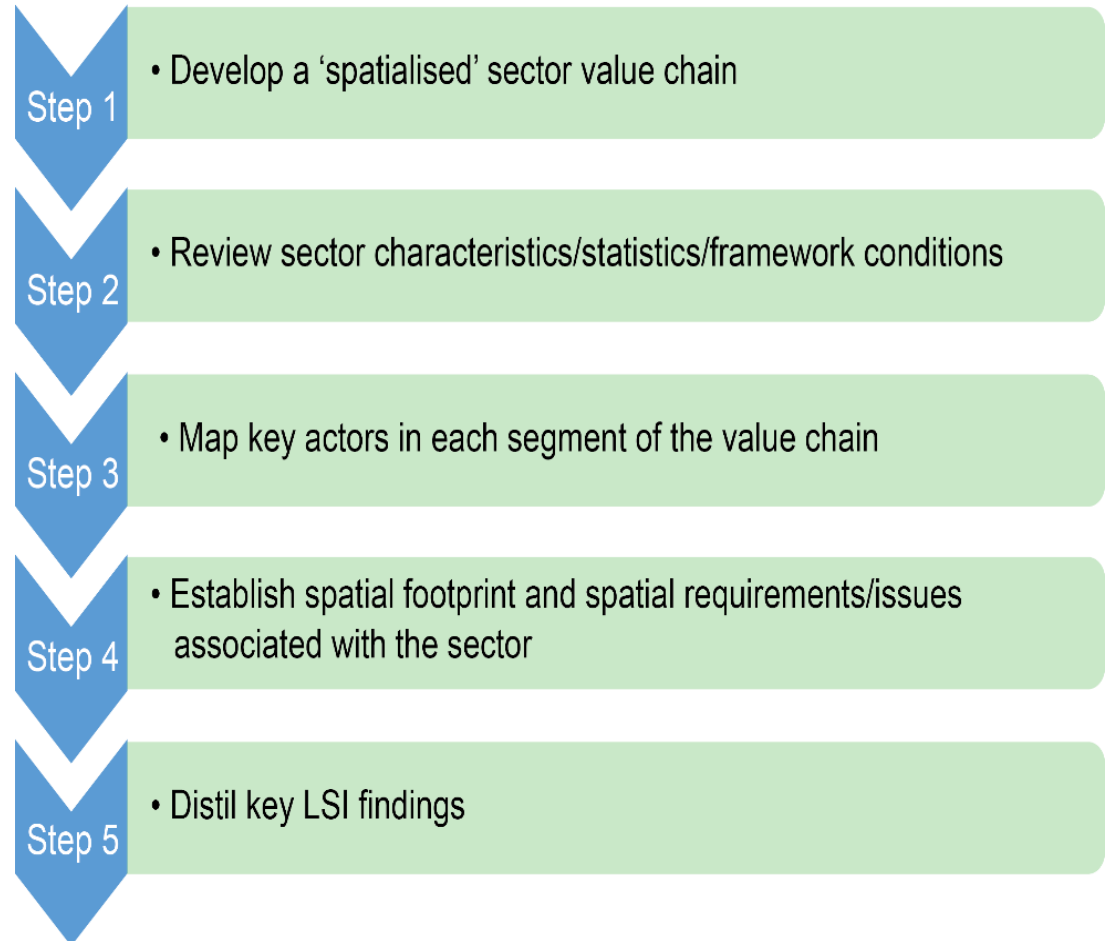


Co-funded by
the European Union



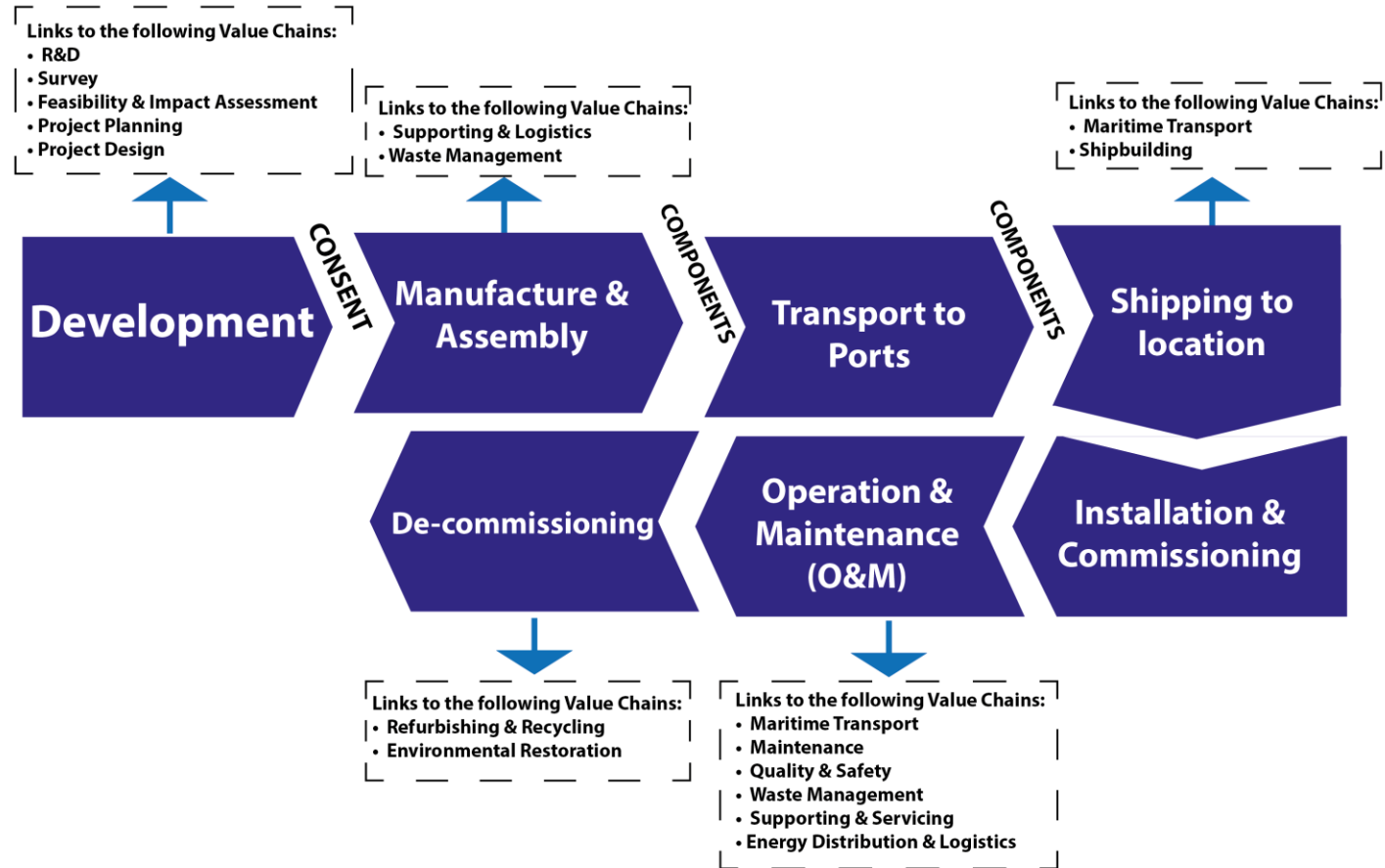
A Value Chain Analysis Methodology

- **Scoping exercise – by LSI Working Group**
- **Decision on sector for analysis – Emerging market offshore wind in the Irish Sea by working group based on policy drivers**
 - Climate change
 - Energy security
 - Transboundary working
- **Core Area – The NI and Irish waters of the Irish Sea**



Co-funded by
the European Union

A Value Chain Analysis Methodology



Co-funded by
the European Union



Highlights

1. Land-sea interactions can be **transboundary** in their influence, making it more difficult to assess them in maritime spatial planning
2. **Techniques** for understanding land-sea interactions include bow-tie analysis, value chain analysis and stakeholder-led approaches
3. There is no 'one size fits all' technique; **scale and spatial implications** must be considered
4. **Climate change** has the potential to increase the impacts of land-sea interactions and therefore the need for them to be taken into consideration



Co-funded by
the European Union



Thank you for your attention!

hejones@liverpool.ac.uk



Co-funded by
the European Union

